



# JACKSON COUNTY

## DETENTION CENTER

COUNTY LEGISLATURE  
MONTHLY REPORT  
AUGUST 2024

### PROJECT STATUS

The new Detention Center remains on schedule and within budget. Substantial Completion is scheduled for December 16, 2025, as established at the onset of the project. The first week of September will mark the midpoint of the 940-day schedule.

Component Package 3 valued at \$5,647,858 represents the remaining funding required to complete the project within the established Guaranteed Maximum Price (GMP) of \$301,936,645. Component Package 4 valued at \$14,050,693 represents a portion of the additional project dollars required to outfit the Furniture, Fixtures & Equipment (FF&E) and Technology. These funds were originally projected and approved by the Legislature within the 2024 budget. Those Component Packages have been reviewed by JCDC Partners in conjunction with the County Project Team and Design-Builder. Our recommendation is for Legislative approval, which would provide the County with the best project value for these funds, schedule assurance, and additional MBE/WBE participation.

Less than 40% of the project costs has been invoiced to date which illustrates the increasing volume of construction activity on site that is occurring from now until the end of the schedule. Construction progresses from the northwest corner of the building pad to the southeast, moving from the Central Utility Plant which houses the mechanical, electrical, and plumbing equipment that operates the building to the administrative offices and public facing front entry.

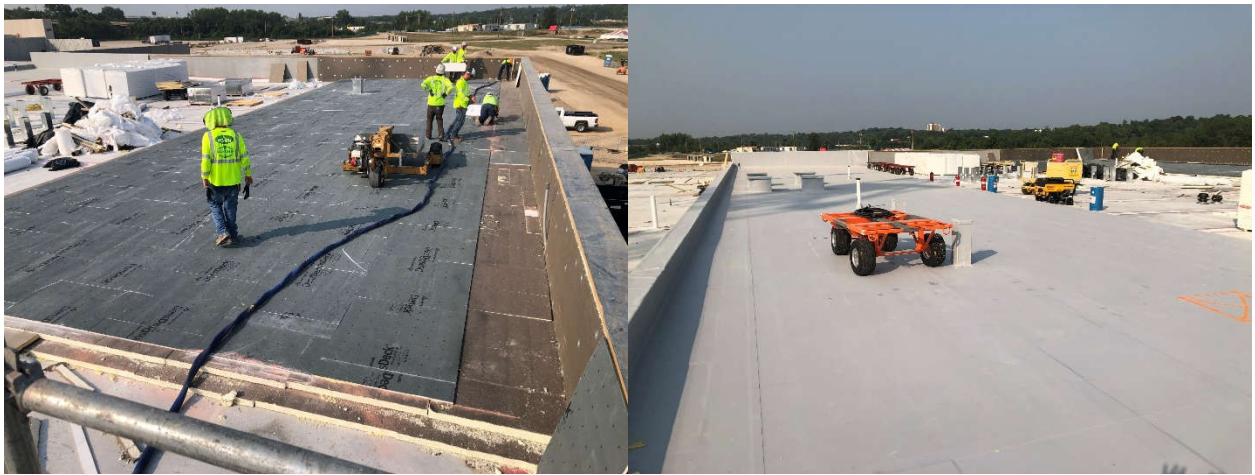
The following images represent the progress that has been made in the last month since our July update.



*Drone imagery of the project site looking south towards US Highway 40.*



*Equipment being placed near the Central Utility Plant.*



*Roofing installation.*



*Interior CMU partitions and metal stud partition walls being constructed with duct work overhead.*

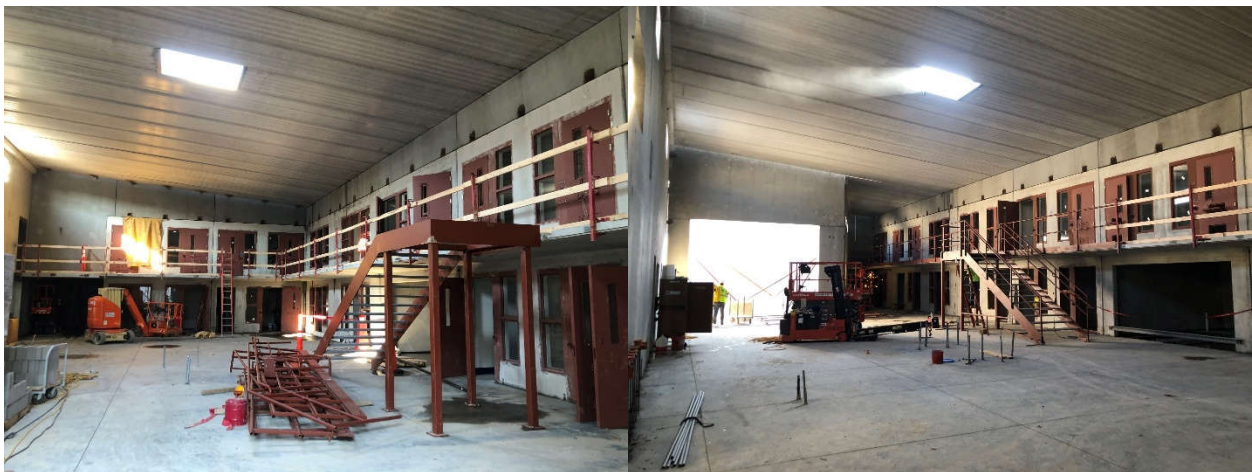




*Slab on grade preparation, and precast panel placement.*



*Precast cell modules being placed and an interior mockup.*



*Secure dayrooms with precast cell modules and roofing.*



*Steel placement at the administrative end of the building near the lobby.*



*Detention pond and workforce trailer.*

Construction activity on site includes completion of site utilities such as power and sanitary sewers, floor slabs, precast erection, interior masonry, stud walls, rough in of mechanical, electrical, plumbing, as well as security and data. Casting of cell modules continues while roofing structure and enclosure has begun.

## **COMMUNICATIONS**

Our team has been working with the design build team to highlight workforce development opportunities for the project site. We have been promoting activities to attract and acquire minority, women, and veteran talent to join the trades at the site. Supporting the county management team, our team is generating social media posts, updating the website, and creating project fact sheets to share the build progress activities with our stakeholders and the community. We have also been identifying potential grant opportunities to support the infrastructure improvements on and tangential to the site.