



JACKSON
COUNTY
PUBLIC
HEALTH

COVID-19 in EJC

August 5th, 2024



//

JACKSONCOUNTYHD



01.

COVID-19 Variants

JN.1, KP.3, and KP.3.1.1 are currently dominant strains

02.

Current Trends

Cases, hospitalizations, & deaths

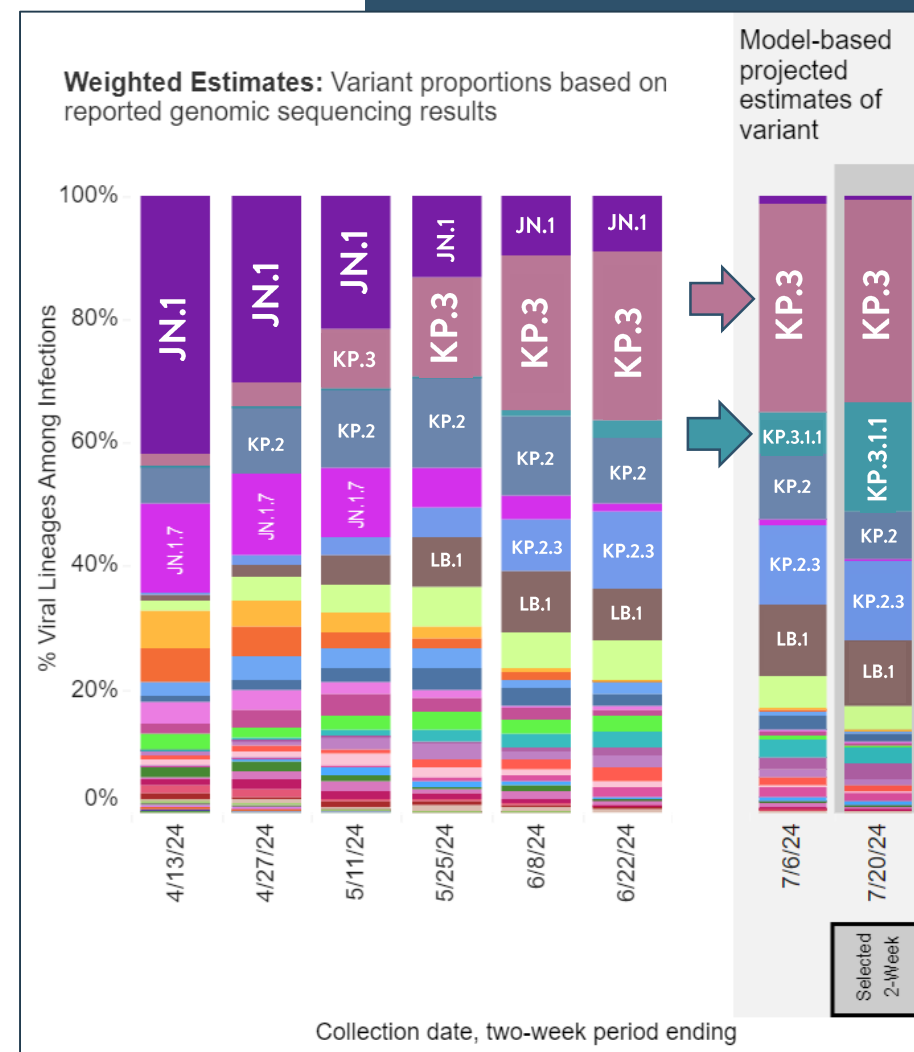
03.

Recommendations

Up-to-date guidance

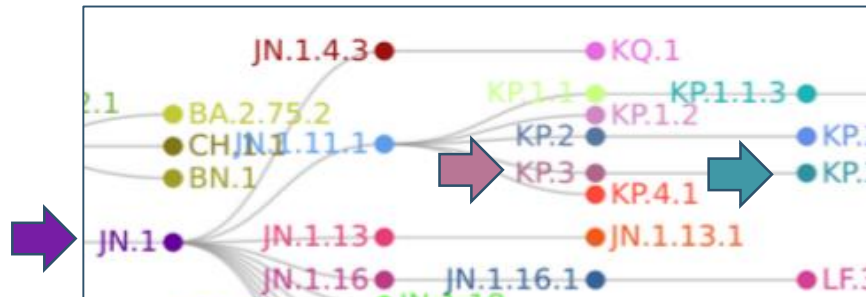
01. KP.3.1.1 INCREASE PROJECTED: CURRENT VARIANTS

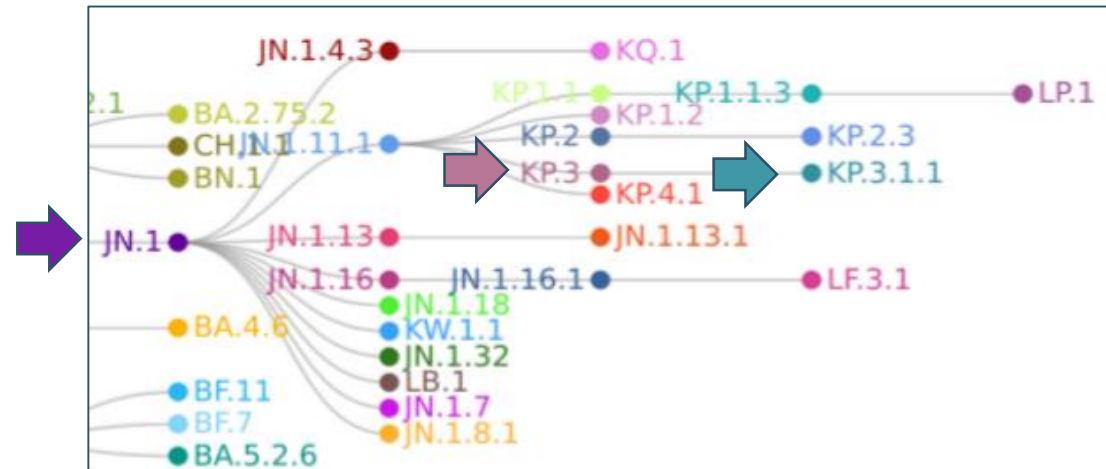
- **JN.1** has dropped in prevalence, replaced first by **KP.3** and now **KP.3.1.1** - sometimes called the “FLiRT” variants.
- Together, these Omicron-descended subvariants will soon account for **over 50%** of COVID-19 cases.



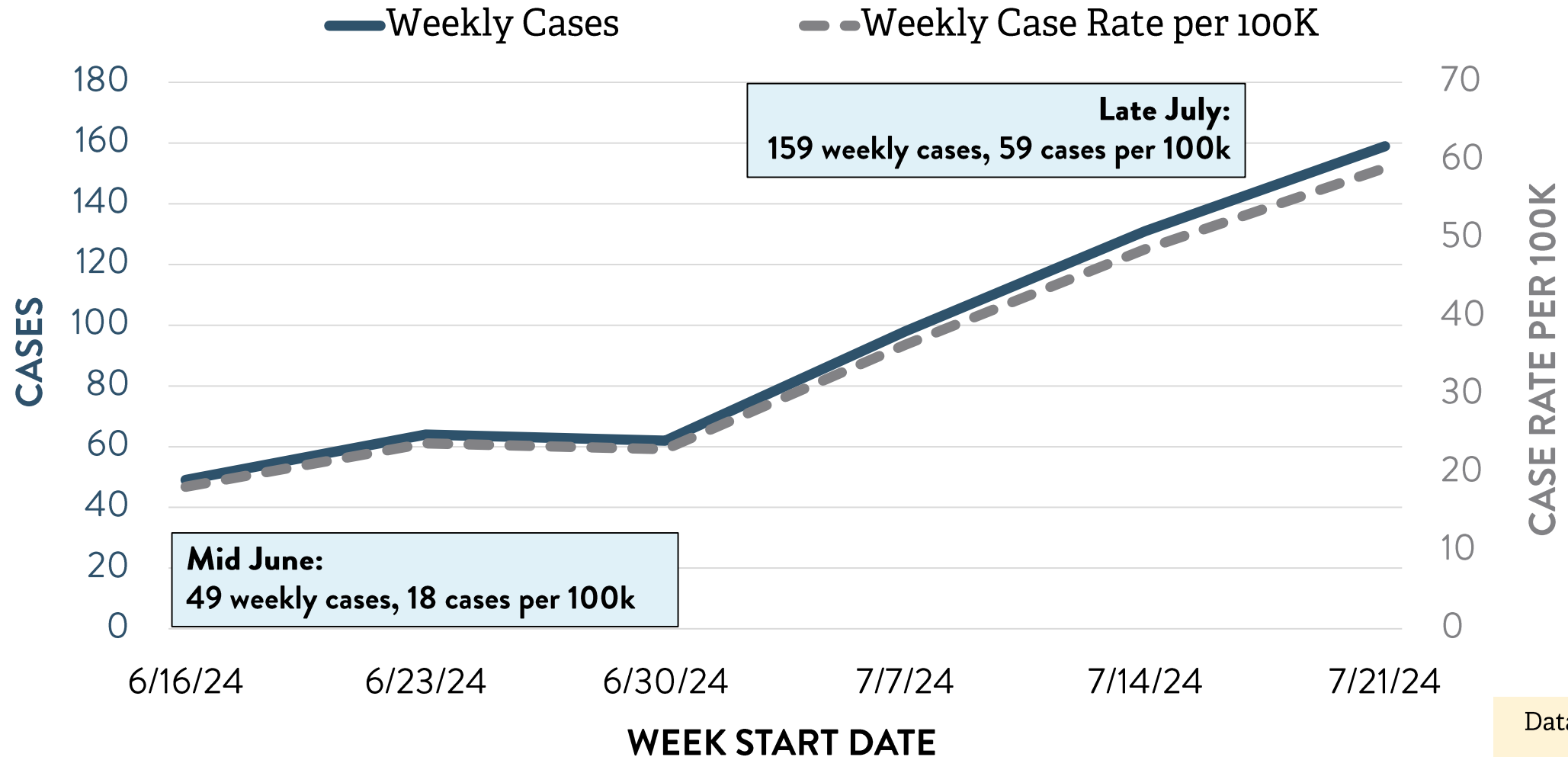
Weighted COVID-19 variant proportions in the US, projection through 7/20/2024. CDC.

02. *MORE TRANSMISSIBLE BUT NOT MORE SEVERE: VARIANT VIRULENCE*

- The “FLiRT” variants are spreading more easily & quickly than previous strains
 - Responsible for current surge in cases
 - *NOT* currently linked to more severe illness/virulence
 - Updated Fall 2024 vaccine will target **JN.1-descended** variants
- 
- A phylogenetic tree diagram illustrating the genetic relationships between various influenza virus strains. The tree shows a central node labeled 'JN.1' (purple dot) which branches out into several other strains. To the right of JN.1, there are strains like JN.1.13 (pink dot), JN.1.16 (green dot), and JN.1.16.1 (blue dot). Further to the right, there are strains like KP.1 (pink dot), KP.1.1.3 (teal dot), KP.1.2 (pink dot), KP.2 (blue dot), KP.3 (pink dot), KP.4.1 (red dot), JN.1.13.1 (orange dot), and LF.3 (pink dot). A large purple arrow points from the left towards the JN.1 node, and a large teal arrow points from the JN.1 node towards the right, indicating the direction of viral spread or evolution.

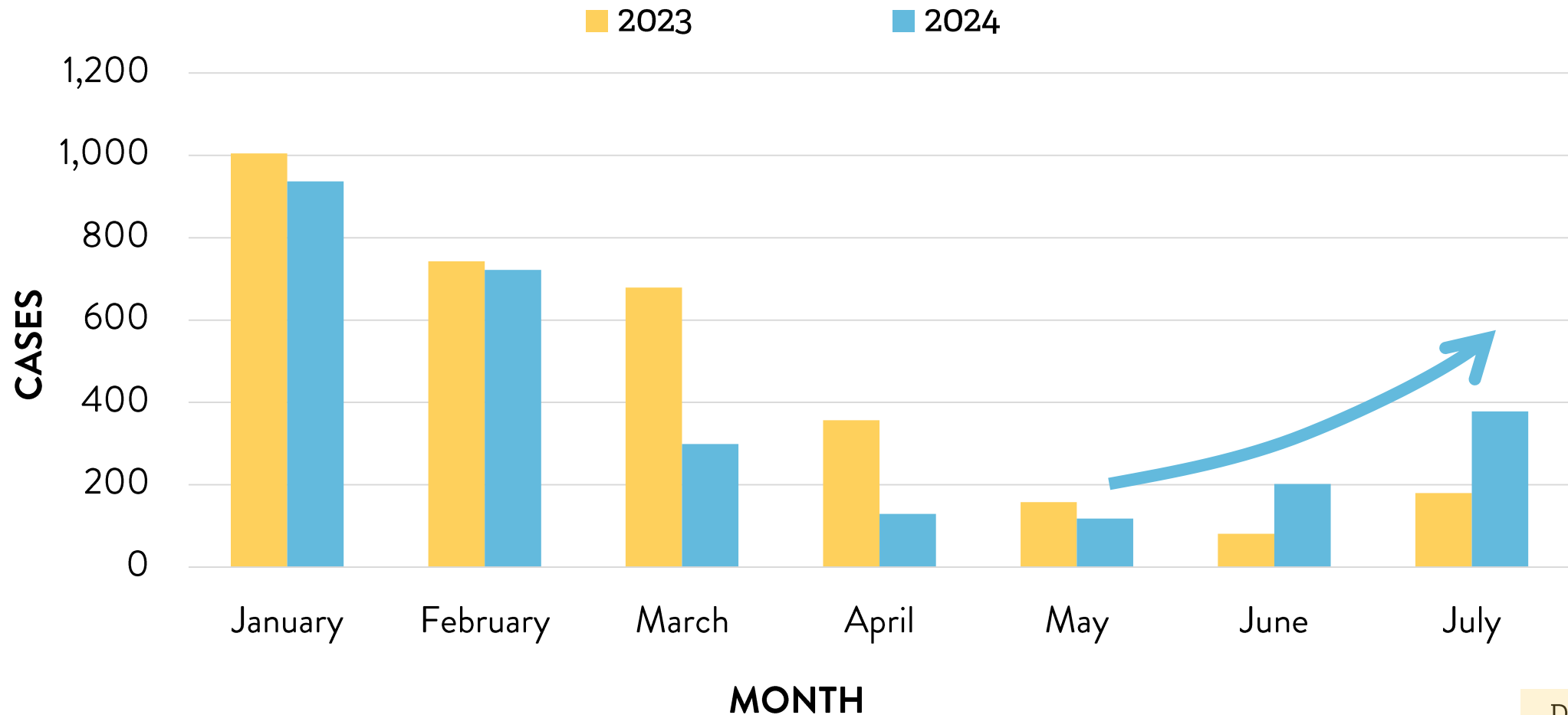


02. *TRENDING UPWARD OVER PAST 6 WEEKS:* COVID-19 CASES IN EJC



*Cases reported do not include at-home tests.

02. *ANNUAL SUMMER MONTH SURGE SEEN IN* COVID-19 MONTHLY TRENDS IN EJC



*Cases reported do not include at-home tests.

Data Updated:
7/31/2024

02. *HOSPITALIZATIONS & DEATHS REMAIN LOW FROM* **BURDEN OF COVID-19 IN EJC**

COVID-19 hospitalizations no longer reported in MO, but according to available estimates, remain **LOW**

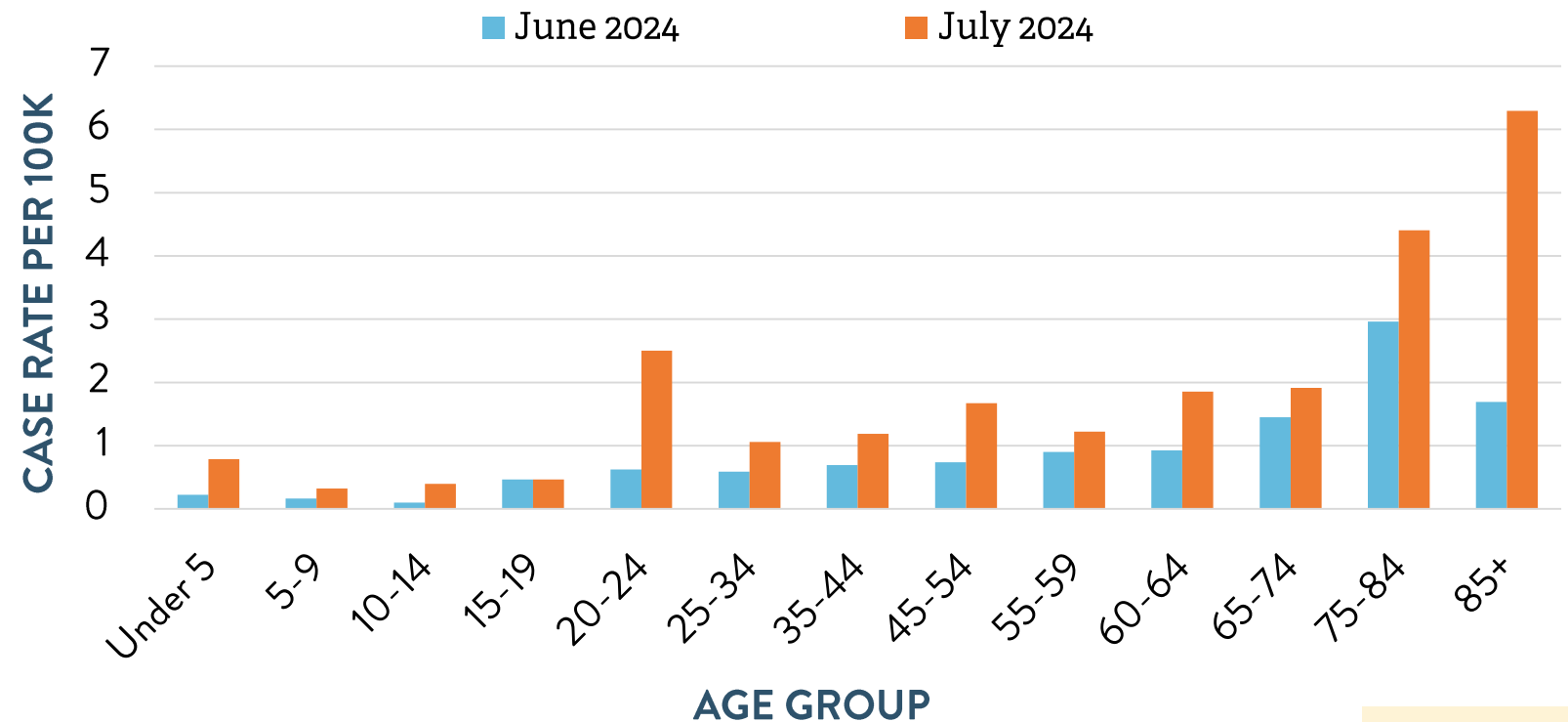
0 deaths
related to
COVID-19 in
past 10 weeks



02. AGES 60+ MOST VULNERABLE: COVID-19 RATES BY AGE

- Highest rates amongst ages **85+** and **20-24**
- Most vulnerable populations are older adults (**ages 60+**)

COVID-19 MONTHLY CASE RATE BY AGE GROUP
IN EJC, SUMMER 2024

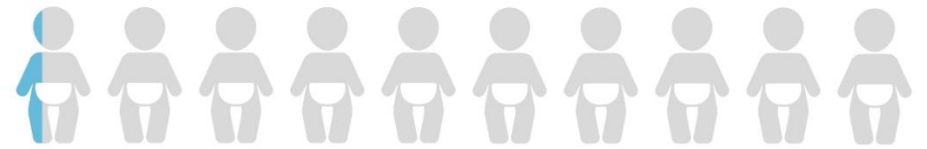


Data Updated:
7/31/2024

02. AGES 60+ LEADING FOR VACCINATION IN EJC, 2023-24

- Highly recommended that **ages 60+** receive up-to-date vaccines
 - Ages 60+ were the most highly vaccinated age group as of June 2024 (2023-24 season vaccine)
- Vaccines recommended for 6 months and older

3%
of ages 0-5



15%
of ages 18+



35%
of ages 60+



* 65% of distributed vaccines went to those ages 60+

03. CURRENT RECOMMENDATIONS

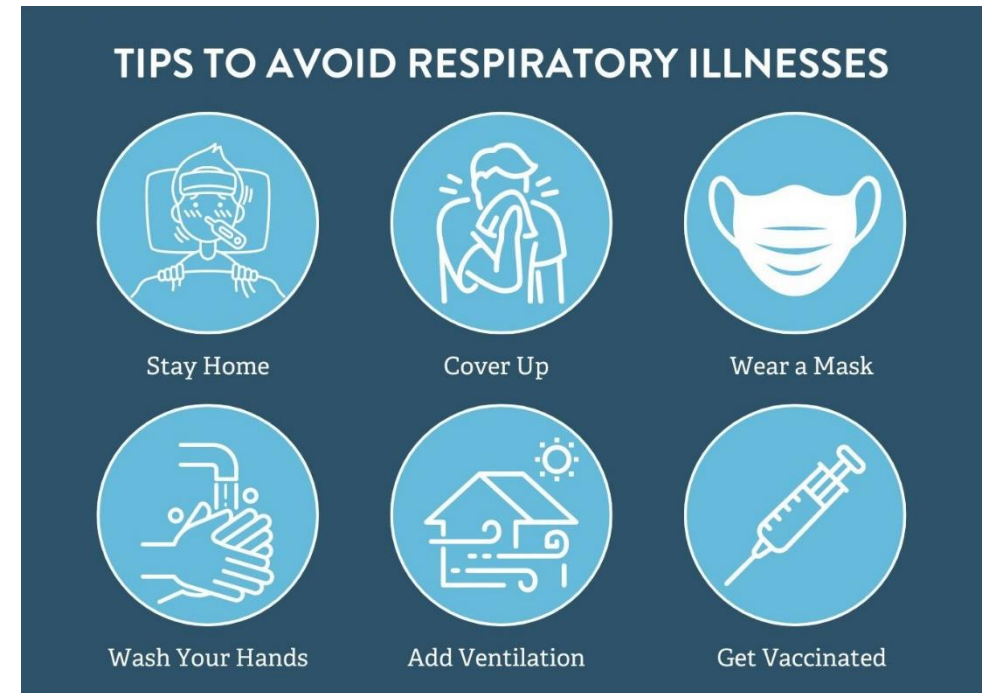
- Self-isolate when ill and avoid contact with others to prevent transmission
- Utilize available antiviral therapies to:
 - Mitigate symptoms
 - Reduce risk of complications
- Return to routine activities **only** when symptoms have consistently improved for *at least 24 hours*
 - Any fever has subsided without the use of fever reducers



Adapted from: Will County HDCHC

03. *CURRENT* RECOMMENDATIONS

- Ensure immunization against COVID-19 to minimize the risk of:
 - Severe illness
 - Hospitalization
 - Mortality
- Prevent the spread of pathogens by:
 - Regularly washing or sanitizing hands
 - Covering coughs and sneezes
 - Disinfecting frequently touched surfaces



Adapted from: Will County HDCHC