

# JACKSON COUNTY LEGISLATURE COMMUNICABLE DISEASE UPDATE

*December 2022*



JACKSON COUNTY HEALTH DEPARTMENT

# COVID-19 TRENDS



JACKSON COUNTY HEALTH DEPARTMENT



# COVID-19 CASES

## 7-Day Case Rate per 100,000

<u>Week</u>	<u>Case Rate</u>
Week 10/30	92.44
Week 11/6	83.24
Week 11/13	80.66
<b>Week 11/20</b>	<b>90.60</b>

- % Change in COVID-19 case rate compared to 4 weeks earlier: **+24.87%**

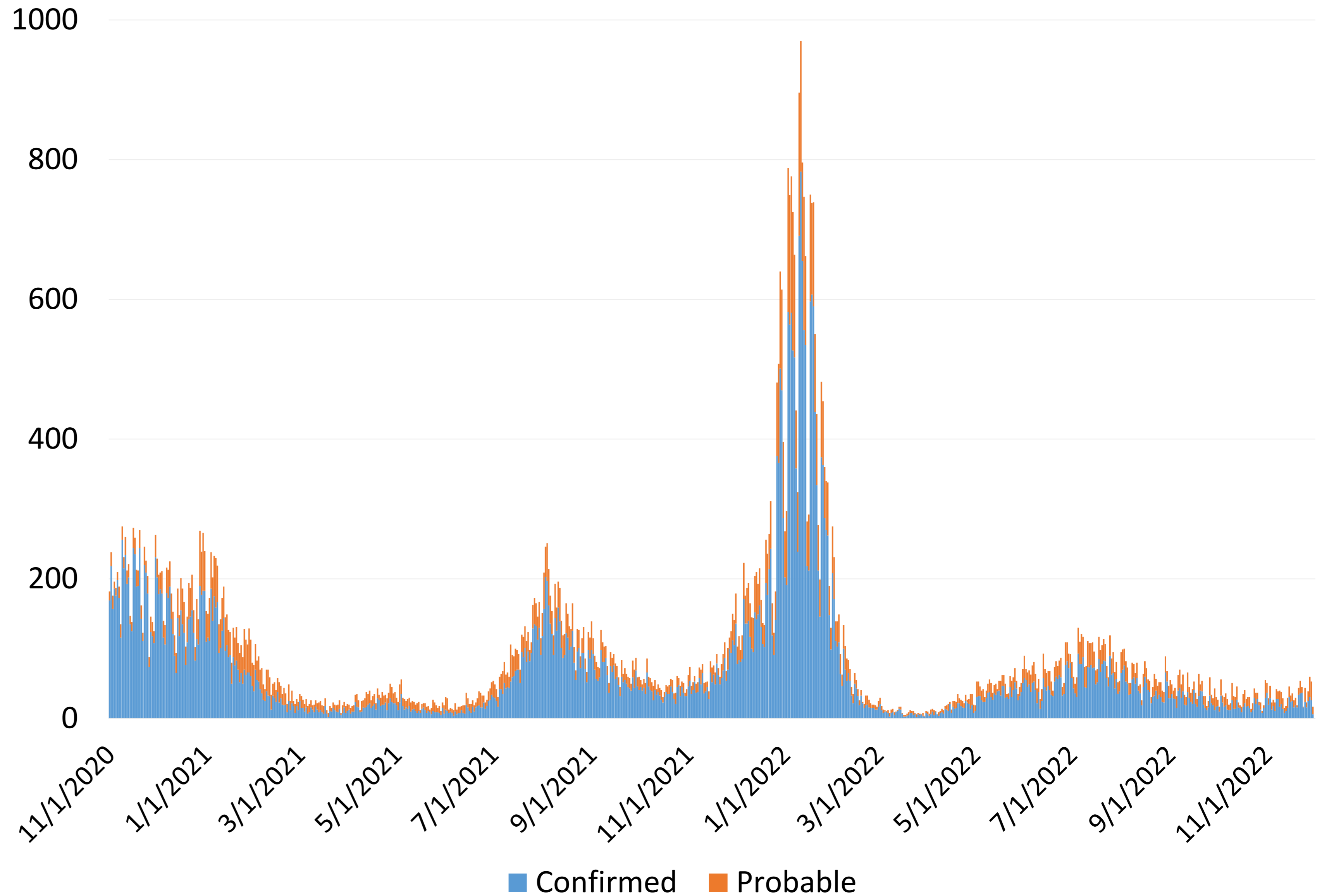
\*still receiving data and case reports – value is incomplete.

*At-home tests not included in case counts.*



JACKSON COUNTY HEALTH DEPARTMENT

## COVID-19 Cases in EJC, Nov. 2020 – Dec. 2022



■ Confirmed ■ Probable

@JacksonCountyHD



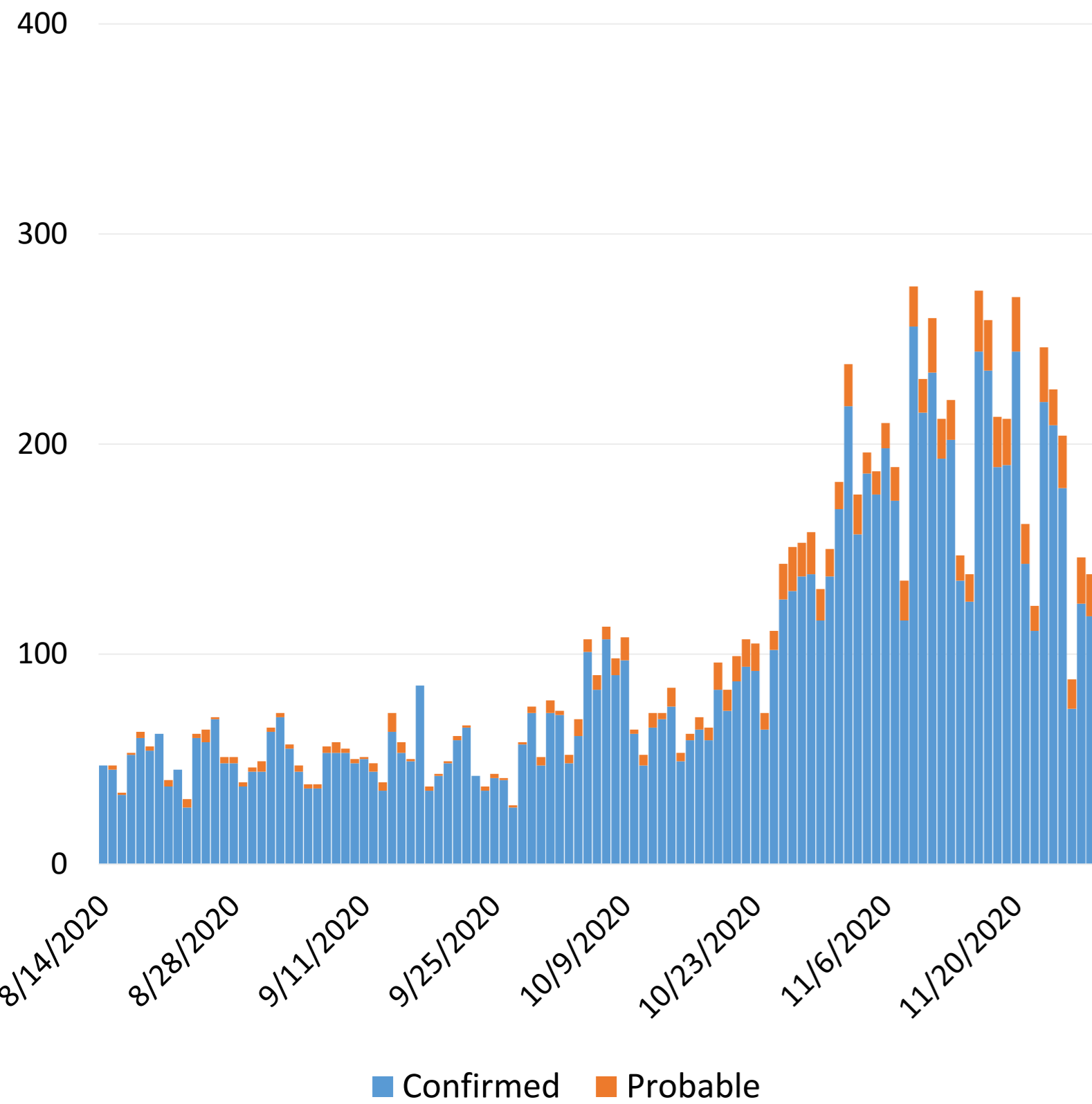
# COVID-19 CASE TRENDS

## 2020

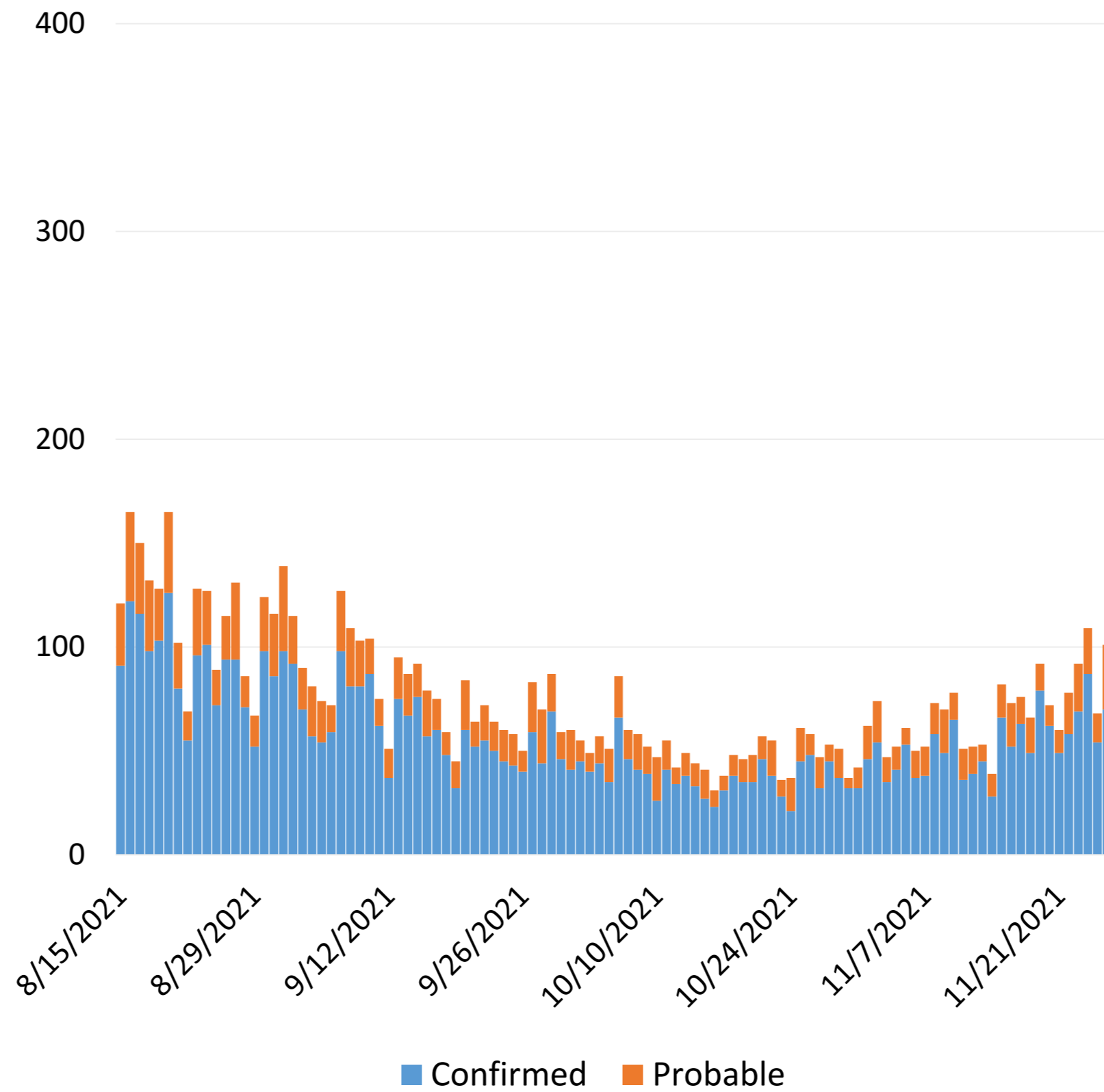
## 2021

## 2022

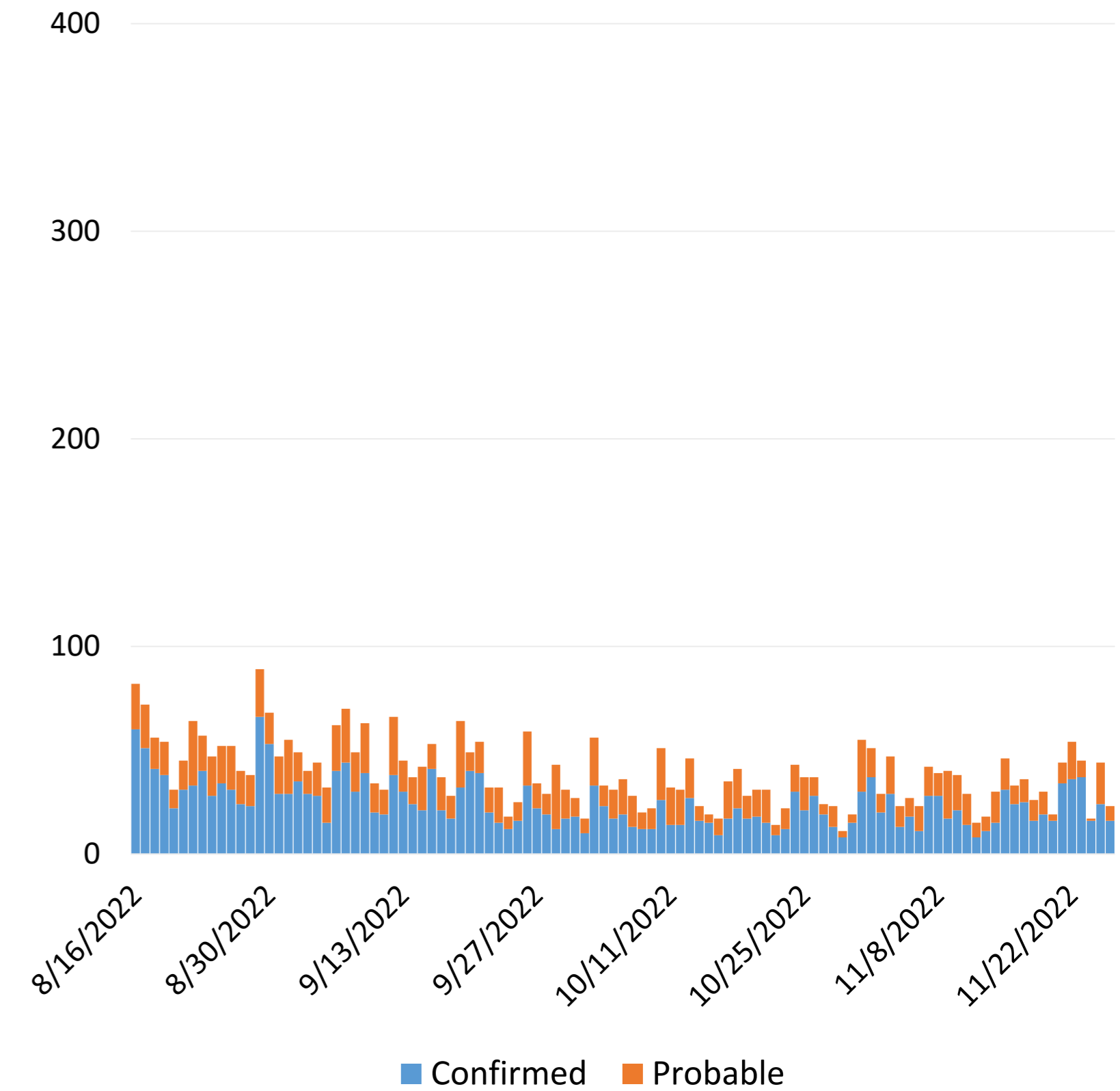
COVID-19 Cases in EJC, Week 34-48, 2020



COVID-19 Cases in EJC, Week 34-48, 2021



COVID-19 Cases in EJC, Week 34-48, 2022



JACKSON COUNTY HEALTH DEPARTMENT

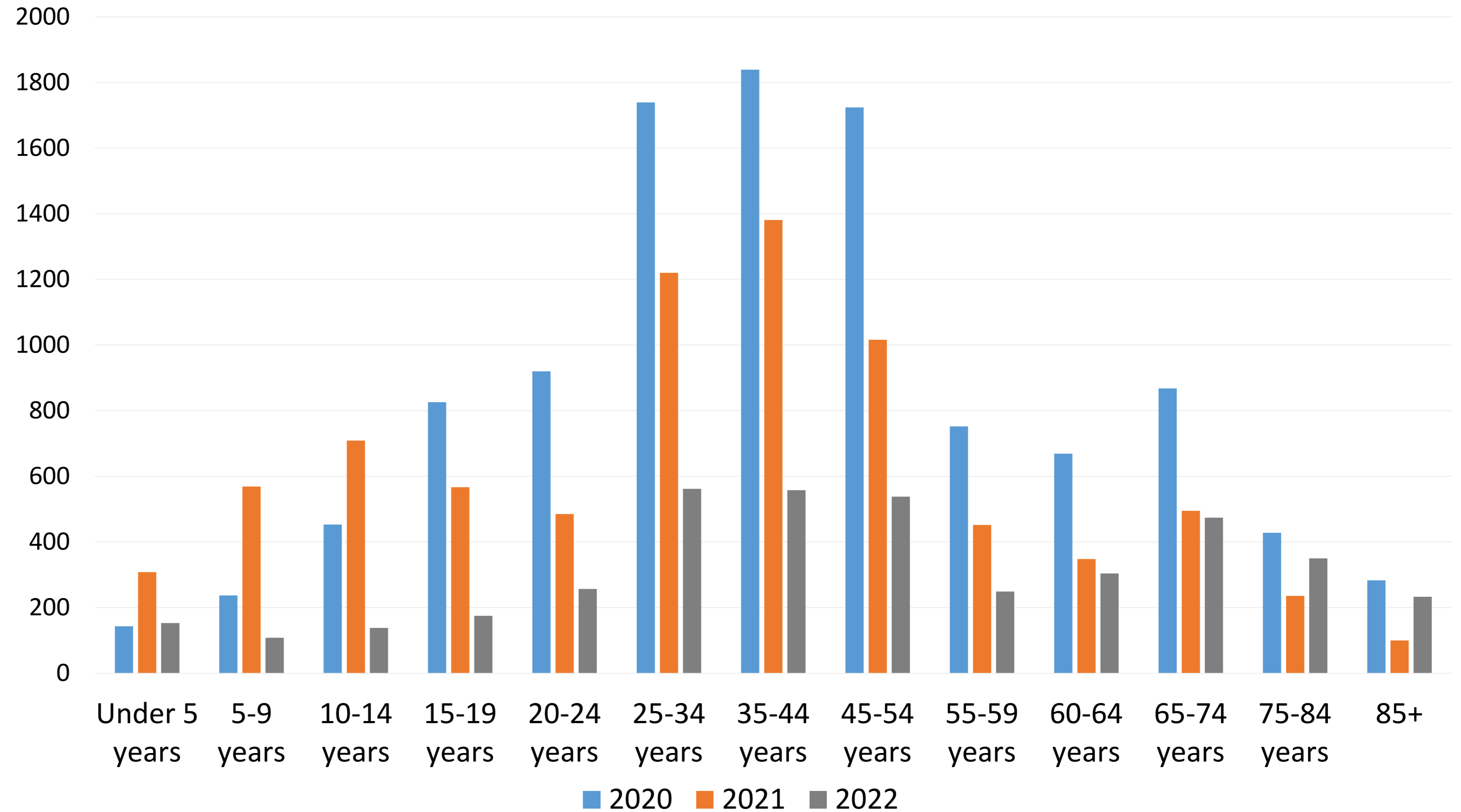
@JacksonCountyHD



# COVID-19 - CASE TRENDS BY AGE GROUP

- 2022 cases between August-November have been lower than 2020-2021 cases in almost all age categories.
- Time Range: 8/14/22-11/26/22

COVID-19 Cases by Age Group, Weeks 34-48 of 2020-2022

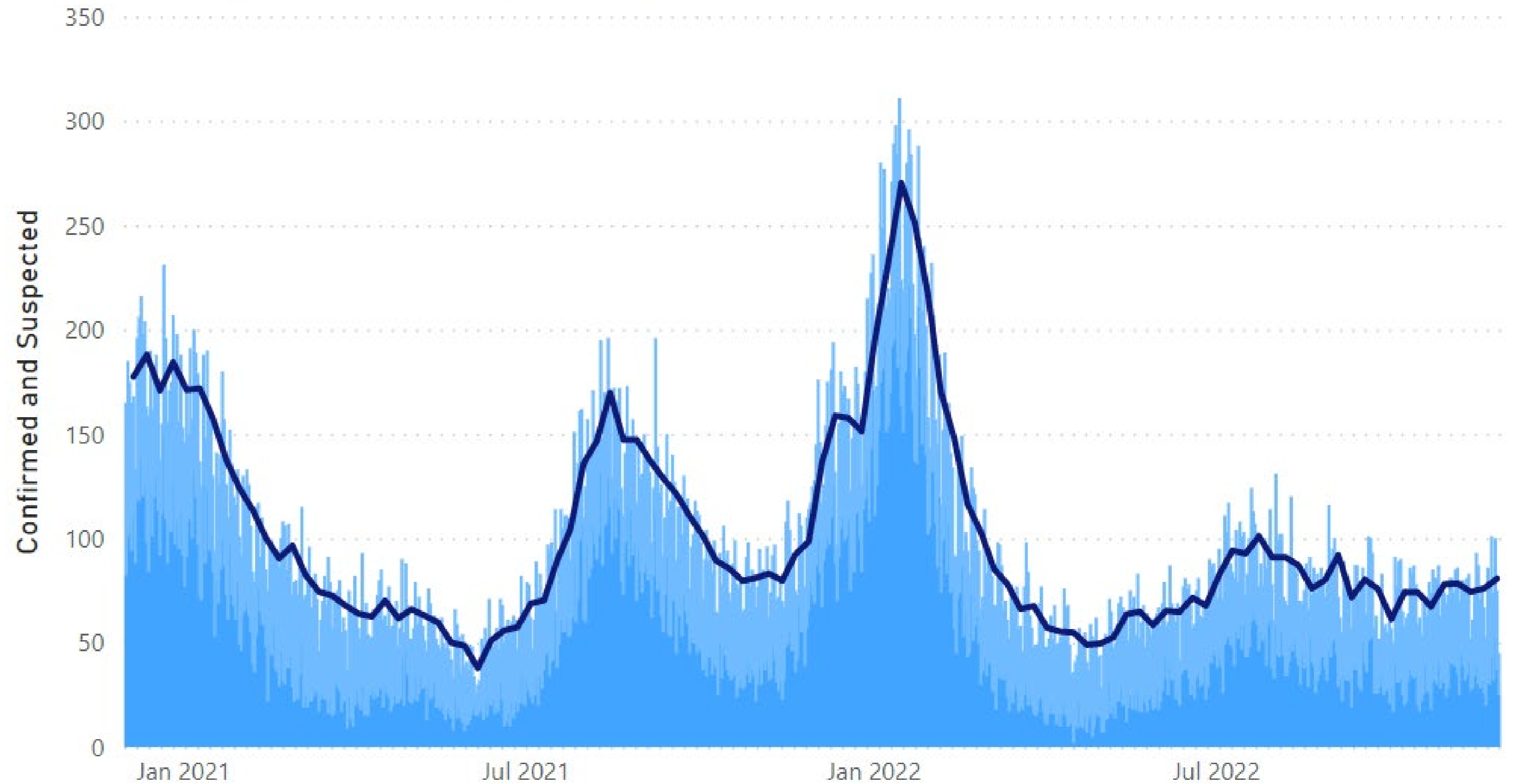


# COVID-19 - HOSPITALIZATIONS

- Daily Average of New Hospitalizations for the MARC region has seen a 6.2% increase since the previous week, with 81 daily new hospitalizations on 11/27.
- **23 of 27 hospitals reported hospitalization data for the 11/27 figure.**

## New Hospitalizations 7-day rolling average trend line\* and daily bars for single jurisdiction

● Confirmed ● Suspected ● Daily Average New Hospitalizations\*



JACKSON COUNTY HEALTH DEPARTMENT

Source: <https://marc2.org/covidhub/>  
Data Accessed: December 1<sup>st</sup>, 2022

@JacksonCountyHD



# CDC Criteria – Level of Community Transmission

New Cases per 100k population in the last 7 days	Indicator	Low	Medium	High
< 200 Cases	New COVID-19 admissions per 100,000 population (7-day total)	< 10.0	10.0-19.9	≥ 20.0
	Percent of staffed inpatient beds in use by COVID-19 patients (7-day average)	< 10.0%	10.0-14.9%	≥ 15.0%
≥ 200 cases	New COVID-19 admissions per 100,000 population (7-day total)	N/A	< 10.0	≥ 10.0
	Percent of staffed inpatient beds in use by COVID-19 patients (7-day average)	N/A	< 10.0%	≥ 10.0%

Date of Data Pull	Weekly Case rate per 100k	New COVID-19 Hospital Admissions per 100k	Level of Transmission	Comment:
11/27/22	107.54	9.2	Low	Includes all of Jackson County

Data Accessed: December 1, 2022



JACKSON COUNTY HEALTH DEPARTMENT

@JacksonCountyHD



# CDC Recommendations – LOW Rating

- Stay up to date with COVID-19 vaccines and boosters
- Maintain improved ventilation throughout indoor spaces when possible
  - Wear a mask on public transportation
- Follow CDC recommendations for isolation and after exposures, including getting tested if you are exposed to COVID-19 or have symptoms of COVID-19
- People with symptoms, a positive test, or exposure to someone with COVID-19 should wear a mask
- You may choose to wear a mask at any time as an additional precaution to protect yourself and others
- If you are immunocompromised or high risk for severe disease, talk with a healthcare provider about additional preventative actions such as
  - Wear a mask or respirator indoors in public
  - Have a plan for rapid testing if needed (e.g., having home tests or access to testing)
  - Treatments like oral antivirals, PrEP, and monoclonal antibodies





# Influenza TRENDS



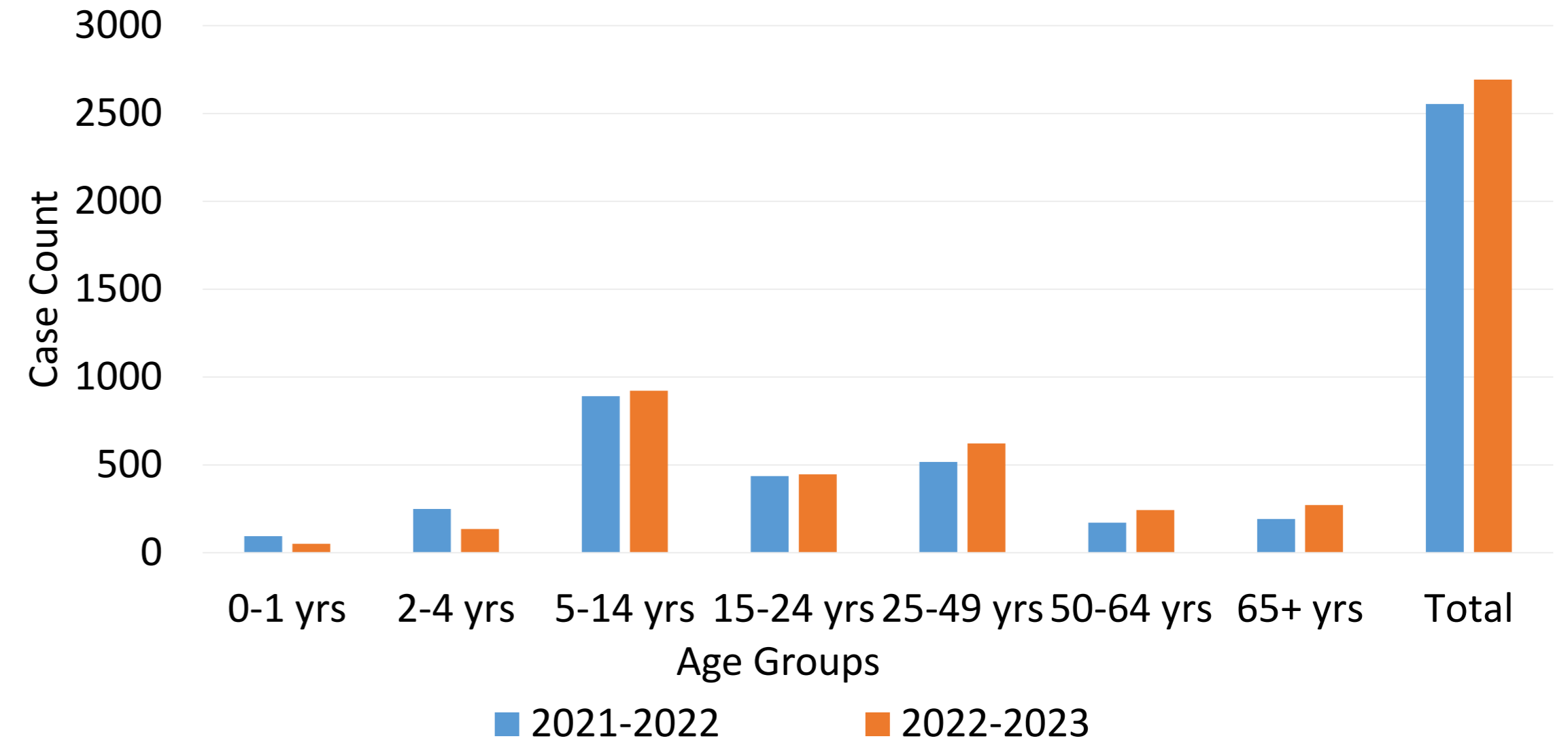
JACKSON COUNTY HEALTH DEPARTMENT



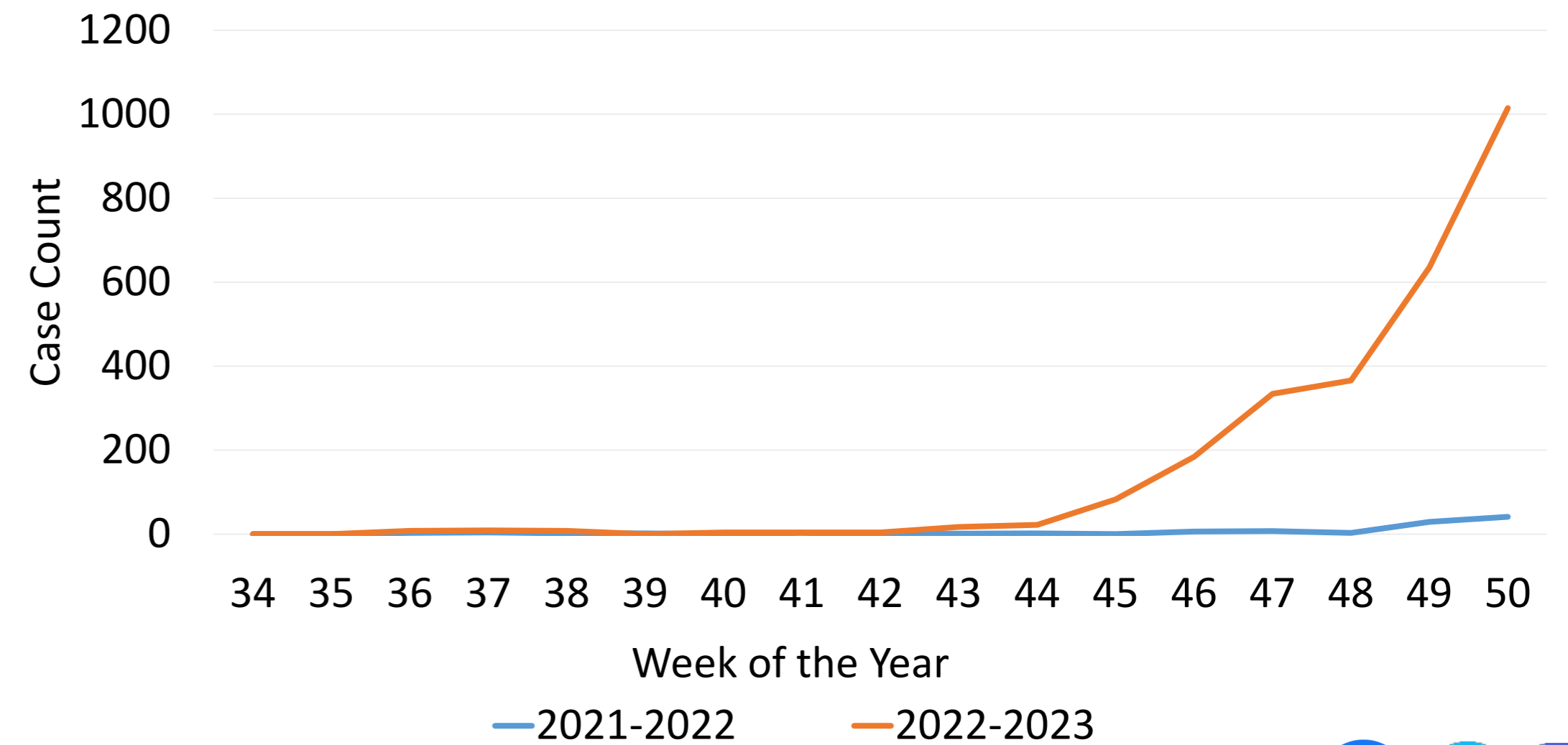
# INFLUENZA – EJC

- **2020-2021** cases are not included since there were **42 cases** during the flu season due to COVID-19 lockdowns and isolations.
- **Influenza cases are highest between the ages of 5 to 50 for both years.**
- **Influenza cases occurred earlier, and in greater numbers, in 2022-2023 compared to 2021-2022.**

Flu by Age in Eastern Jackson County



Flu by Week in Eastern Jackson County



# RSV TRENDS

Respiratory syncytial virus



JACKSON COUNTY HEALTH DEPARTMENT



# RESPIRATORY SYNCYTIAL VIRUS (RSV) – MISSOURI

- RSV is a **common respiratory virus that usually causes mild, cold-like symptoms.**
  - Most people recover in a week or two, but RSV can be serious, especially for infants and older adults.
- **RSV is not a reportable disease and therefore we do not have Eastern Jackson County trends.**
- **RSV surveillance occurs in Missouri through select laboratories. The reported cases in Missouri are higher this year than in 2021.**
  - **2021 Peak Weekly Cases: 157**
  - **2022 Peak Weekly Cases: 602**

