



JACKSON COUNTY

DETENTION CENTER

OVERVIEW

SPRING 2021

JUSTICE WITH DIGNITY

In order to provide for the public safety of the citizens of Jackson County, it is sometimes necessary to detain and house those who may harm themselves or others in the County Jail. Most of these individuals are awaiting trial, sentencing, or, if sentenced, incarceration at state institutions.

Jackson County will meet the community's needs by planning and building a detention center that is safe, secure, efficient to operate, and incorporates thoughtfully designed long-term solutions for the Jackson County Justice System.

One of the key elements of planning, building, and operating a detention center, is respecting the dignity of detained individuals. To accomplish this, the facility will provide evidence-based treatment and training opportunities that address the needs of the individual and the underlying causes of criminal behavior.

PURPOSE

Overcrowding and deteriorating facilities require the need for an upgraded Jackson County Detention Center. With a new facility comes a new approach. Jackson County has established a multi-phase plan to support the planning, design, construction, and activation of a new jail facility for its citizens.

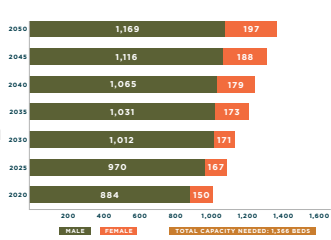
The new facility will institute best management practices, and a better environment for detainees, visitors, and employees. It will include educational resources and social services programs—all aimed at making our community safer by reducing relapse into criminal behavior and helping to encourage productive members of society.

PROJECT TIMELINE



VALIDATION OF NEED

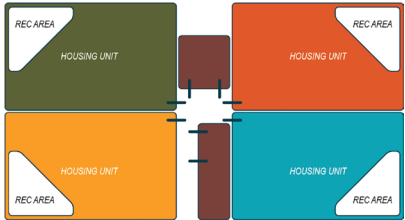
The first phase of the plan focused on defining the needs of the facility. Needs were determined by evaluating previous studies and collecting information from the existing facility. The research was condensed into a report that outlined the best data for understanding the long-term capacity requirements for the Jackson County jail system capacity needs.



PROGRAMMING PHASE

The Programming Phase provided a guide for county officials in the preparation of a new jail design that will accurately meet the goals, objectives, and conditions for both the immediate and future needs of the county. JCDC Partners has developed a programming strategy to review the main facility components of a new detention center to determine how the facility is built.

Elements of the program have been defined by core principals, including state-of-the-art detention center standards; equitable and evidence-based treatment and training opportunities; and a safe, secure, and efficient program to meet the long-term needs of the county. An emphasis was made to create a facility that would provide an atmosphere where every person, including those in custody, staff, and visitors can find success. With focus on healing and rehabilitation, the facility looks to offer productive outcomes for all parties.



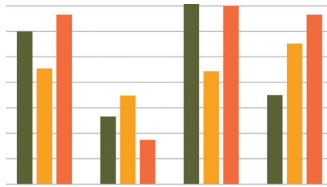
PROJECT DELIVERY

An in-depth evaluation will help determine the best construction approach based on the financial and project management strategy. How the project is to be procured and developed should be decided in early 2021.



FUNDING

Once preliminary planning is completed, the County, along with its financial advisors, will evaluate the most efficient and cost-effective manner to pay for the new detention center.



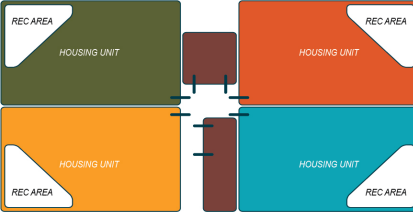
MARICOPA COUNTY INTAKE, TRANSFER & RELEASE DETENTION FACILITY
PHOENIX, AZ

CRITERIA REQUIREMENTS

The Criteria Document Phase conveys the County’s design and construction requirements through a summary of work that includes technical requirements, plans, project constraints, reference materials and contractual requirements. The documents allow the County to provide a higher level of definition and project detail refinement for the new detention center. The criteria documents will provide a road map for the design and construction teams as they proceed with the project.

Below are the specific conditions and constraints of the project:

- Outlines the basis for bids and procurement
- Identifies technical issues, risks, and project constraints
- Defines life cycle criteria, including operation and maintenance of the facility
- Maximizes innovation opportunities
- Establishes quality assurance criteria



LOCATION | SITE DEVELOPMENT

The detention center’s location will be based on the long-term needs of the Jackson County Justice System as informed by the Validation of Need and Programming Phases of the project.

A formalized process based on the following criteria has been implemented to best determine the site’s location:

- At least 50 acres without underlying concerns (poor soil, wetland, or environmental issues) that may increase the cost of site development.
- A travel-time distance of 20-30 minutes between the site and the Downtown and Independence Courthouses, and Truman Medical Center.
- Ease of highway or arterial access and other forms of transportation including the bus line and transit opportunities.
- A surrounding area deemed safe and visible, with limited adjacent residential areas or other sensitive land use.
- Availability to adjacent public and private utilities (sewer, power, gas, telephone/data).
- Preferable unincorporated property in Jackson County that is convenient for commuters, staff and the public.
- The site must allow for efficient and cost-effective facility operations.

Quantitative and qualitative data determined by an independent agent was used to objectively evaluate and short list the potential sites using the criteria above. Based upon availability, evaluation of developability, and appropriate economic value, a single site recommendation will be made to the Legislature for approval.



MARICOPA COUNTY INTAKE, TRANSFER & RELEASE DETENTION FACILITY
PHOENIX, AZ

VISION FOR SITE DEVELOPMENT

The goal for the detention center in its chosen location is to provide a positive impact on the surrounding community, one that offers a catalyst for future growth and regional partnerships. The new facility would be seen as community resource, providing employment and enhanced economic opportunities for the surrounding communities. The potential for new and enhanced infrastructure within the area, including improved roads and underground utilities, would be associated with the construction. Through good planning and design, the facility will become a community asset that is welcoming, safe, and iconic for both the county and the municipality.

The site would be developed on a property of 50 acres or more, with the one to two-story facility itself encompassing approximately 400,000 square feet. It will be designed and constructed to support an estimated resident population through the year 2,030 (1,204 beds). The site’s initial infrastructure, though, would support an increased resident population estimated through 2050 (1,366 beds).



WAKE COUNTY DETENTION CENTER
WAKE COUNTY, NC



DOUGLAS COUNTY SHERIFF'S OFFICE
LAW ENFORCEMENT AND ADULT DETENTION CENTER
AUSTELL, GEORGIA



STEERING COMMITTEE

FRANK WHITE County Executive
THERESA GALVIN Chair of County Legislature
DARRYL FORTE Sheriff
DAVID BYRN Presiding Judge
JEAN PETERS BAKER County Prosecutor