



## PROJECT STATUS

JCDC Partners, JE Dunn, and the County Project Team recently hosted the appointed Steering Committee on a site tour and follow-up meeting in the job trailer. We toured recent activities on site and addressed any current or potential questions relating to the project. This Steering Committee representative group included Legislative Chair Jeanie Lauer, Sheriff Daryl Forte, Chief Judge Jalilah Otto, and representatives of County Executive Frank White.

Significant construction progress has been made as activities continue to according to the GMP cost and schedule. The final element of the overall Guaranteed Maximum Price contract, Component Package 3, is intended to be delivered this coming June. The project remains within the overall \$301,162,067 budget and is on schedule to be substantially complete on December 10, 2025. This past Monday was day 353 of 940 contract days.

JCDC Partners has been tasked with identifying an early completion. Those conversations with the County's Design-Build Partner, JE Dunn & Axiom, are ongoing with the County Project Team.

## DESIGN PHASE

The team continues to progress to the scope of the Furnishings, Fixtures and Equipment and Technology components on the project. This month we have held numerous meetings to finalize these scopes and additional elements that naturally occur at the end of the design phase such as signage and wayfinding. FF&E and Technology equipment scopes and budgets are being developed for future presentation to the Legislature.

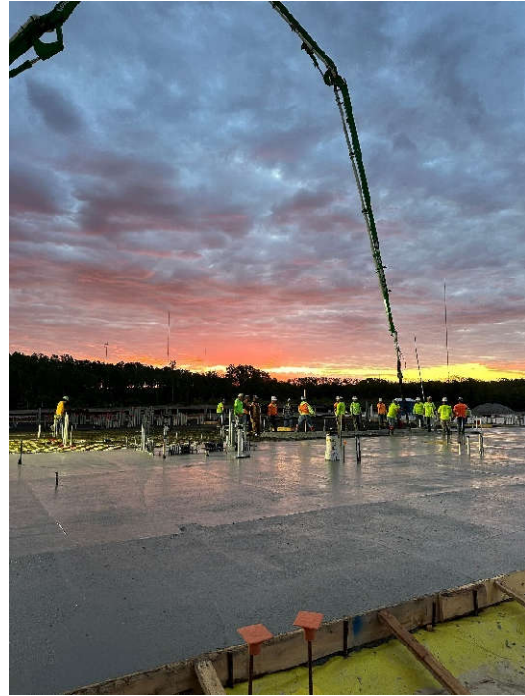
As reported previously, 100% construction documents are complete and costs finalized. Final reviews with user groups and the County Team have occurred.

The Water Main extension permit from Kansas City has been submitted for approval. Other remaining permits are in progress and anticipated shortly including the public sanitary sewer, road improvement / storm sewer from the City of Kansas City and Food Permit from the City. All necessary documentation has been submitted to the City and County.

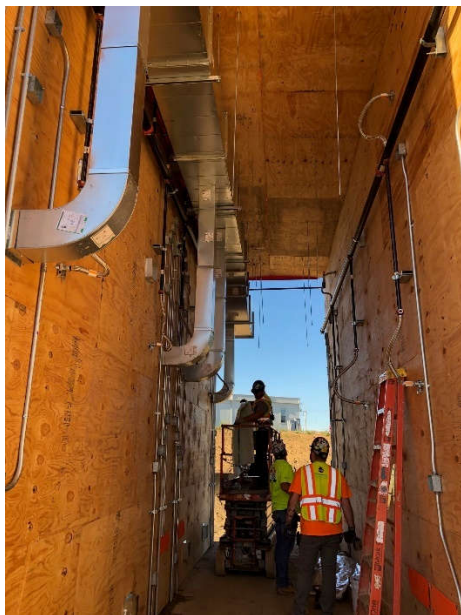
## CONSTRUCTION STATUS

Pictured below is a recent slab on grade pour that occurred in the early morning hours. Multiple areas now have slabs including the central utility plant, kitchen/laundry, one day room, and in late May half of the first-floor administration building. The majority of foundations and footings have also been poured.

Approximately 100 individuals are now on site working on the site. That number will more than double as we progress along the schedule towards more vertical construction.



Production continues at the batch plant and fabrication yard. There are now approximately 80 cell modules fabricated awaiting installation. Plans for their erection along with the exterior precast panels which serve as the final secure perimeter were discussed in a recent pre-installation meeting. Up to 12 modules can be set in one day, but it will take up to 90 days to complete all of the mechanical, plumbing, and electrical system integration in the rear chase behind the units. The photograph below shows the current rear mechanical equipment chase mockup which has been constructed on site. It is utilized to ensure there are no clashes of materials, that appropriate clearances are maintained, and that it can be operated by the facilities management team upon turnover.



The last photograph in this report is a mock-up of the exterior precast panels at the Administration Building. The colors, textures, and geometric layout have been previously approved after a visit to the Enterprise casting yard. The mock-up on site will soon be tested for water infiltration to ensure a tight perimeter without any concerns for leaking which would lead to future damage.



Vertical construction will become apparent in early June.

## TRANSITION PHASE

A two-day Transition Kickoff session occurred which included representatives of the courts and Sheriff's Office, JCDC Partners and the County Project Team. Additional meetings are scheduled to take place each month through occupancy. The intent is to prepare all building users on how to efficiently operate within the new facility, in alignment with the National Institute of Corrections resource guidelines, as the County transitions from an indirect to direct supervision model. Upcoming benchmarking is anticipated to model successful peer facilities in this transition and benefit from lessons learned by those institutions. Transition activities are instrumental in ensuring a safe, secure, and state of the art facility is realized.

## COMMUNICATION

On Tuesday May 7th, members of the Steering Committee attended a tour at the project site. Steering Committee Members were able to view the work completed and in progress, listen to updates from lead construction team members, and ask questions. The Steering Committee members in attendance on the tour were from the County Legislature, County Executive's Office, and Sheriff's Office.





GiGi Owens, Community Relations Coordinator for JE Dunn, has moved on to the project site to provide workforce recruitment for the project. Miss GiGi, as she is fondly referred to, will be located in a trailer near the main entrance of the site. The trailer has been designed and soon to be painted by students from the Hickman Mills Middle School as part of a community outreach project by JE Dunn.