



INSPIRATION *through* COLLABORATION

REQUEST FOR QUALIFICATIONS NO. 24-084

On-Call Landscape Architecture Services

November 12, 2024

A large, stylized graphic element consisting of a white wave shape with a blue inner curve, positioned in the lower half of the page. The background of the entire page is a green-tinted photograph of a park with a child climbing a large, textured play structure. The bottom portion of the page is a solid blue color.

JACKSON  
COUNTY  
PARKS + REC

## TABLE OF CONTENTS

3	Firm Background
4	Relevant Experience
13	Key Personnel
21	References
22	Project Understanding
24	Statement of Availability
25	Quality Assurance Plan

Attachment B



November 12, 2024

Barbara Casamento  
Jackson County, Missouri  
415 East 12th Street, Room 105  
Kansas City, Missouri 64106

**Re: Request for Qualifications No. 24-084**



Above all, parks are places for people. They are a reflection of the community, and can be a point of attraction for people all over the region. We're thrilled to see you're ready to continue making your parks places for all to enjoy, and **Vireo is uniquely qualified** to help you get there. In our process and our results, I'm sure you'll see Vireo will be the partner you can trust with everything from minor improvements to master plans.

You'll see in the following pages our firm is **the region's foremost expert in creative park design and park system planning**. We've designed and implemented playgrounds, parks, park master plans, and system-wide master plans throughout Missouri, Kansas and Nebraska. All of this experience will be brought to bear on whatever challenges may lie ahead of us.

On each project, we embrace the key stakeholders and, when the project calls for it, have a proven process to reach out to all corners of the community to create a project that is of the greatest service to all. That takes creativity, commitment to the client, and a **responsibility to both the mission and the budget** in order to be successful.

Collaboration and responsiveness to our clients are hallmarks of our process. We will tailor the design process to specifically meet your needs and provide you with not only a workable design, but a process that the residents, county leaders, and staff can take part in, agree upon, and get excited about.

We've found when experience and expertise are brought to a true collaboration, we end up with **parks and park systems that fully transform communities**. We're excited to work with you on everything from small park improvements to comprehensive plans for the future that helps Jackson County be a place that everyone wants to be.

Sincerely,

Stephen B Rhoades, PLA  
Owner | Landscape Architect  
816.777.3004  
steve@bevireo.com

[www.bevireo.com](http://www.bevireo.com)

Kansas City  
414 Oak St.  
Suite 101  
Kansas City, MO 64106  
816.756.5690

Omaha  
1111 N. 13th St.  
Suite 116  
Omaha, NE 68102  
402.553.5485



# vireo

Planning | Landscape Architecture | Design



**HISTORY:** Vireo is a 22-person landscape architecture, community planning and environmental planning firm that has focused on ecologically-based planning and design for nearly 30 years. In that time, we've become the region's foremost expert in creative park design, park master planning, park system planning and pedestrian trails. Vireo is based in downtown Kansas City, Missouri with an office in Omaha, Nebraska.

**PHILOSOPHY:** Vireo is in the business of working hand-in-hand with our clients to create healthy places for people. We've built the firm on the design of parks, trails and public spaces that are attractive, livable, vibrant and sustainable – places where people want to be. Whether it's large-scale planning for the future or designing small-scale improvements, and making them real we listen to the people who care about the places in their lives. We create ways to make those places more vibrant, welcoming, inclusive and a reflection of the people who live, work and play there.

**SPECIALIZATION:** Vireo's project library is diverse and covers virtually all areas of landscape and public space design, but our hearts and our deepest expertise lie with public parks and multi-use pedestrian trails. Our work for each park and system incorporates healthy design principles, ensuring an added layer of benefit to the community's green spaces and helping them enhance their brand as a healthy place to live. By doing so, we begin to integrate solutions that remove potential barriers and create better opportunities for achieving a healthier community.

With deep firm experience that ranges from policy development and master planning, through site analysis, design, cost estimating, construction, and implementation, Vireo knows how to integrate policy, design, and development at all levels. Vireo uses a participatory process to generate responsive solutions that increase our connections to nature while allowing us to live healthier lives.

**STRUCTURE:** Vireo, LLC is a Limited Liability Company and a Women's Business Enterprise. Our staff includes landscape architects, community planners, natural resource planners, community engagement specialists, ecologists and graphic designers. By combining our talents, we can provide our clients with the ability to reach out to people, to plan for the future and to create sustainable solutions that beautify, engage and grow the community in every way. All staff proposed for the project work from our Jackson County office in Kansas City's River Market neighborhood.

[www.beVireo.com](http://www.beVireo.com)

Kansas City  
414 Oak St.  
Suite 101  
Kansas City, MO 64106  
816.756.5690

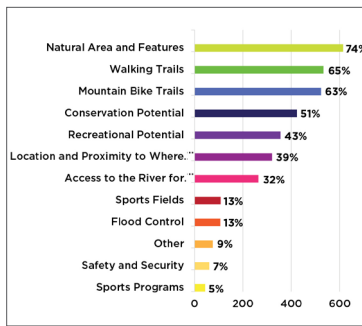
Omaha  
1111 N. 13th St.  
Suite 116  
Omaha, NE 68102  
402.553.5485



RELEVANT EXPERIENCE

# BLUE RIVER PARKWAY MASTER PLAN

KANSAS CITY, MISSOURI



Jackson County Parks + Rec engaged Vireo to create a master plan for the Blue River Parkway which stretches from south of Swope Park to Kenneth Road and consists of approximately 2,200 acres. Throughout the citizen-driven master planning process, input from stakeholders, existing partners, and the public was critical in informing and creating the three major goals and priorities:

- Land management and natural resources
- Enterprise, recreation, and programs
- Park development and improvement

The final deliverable included a master plan document that highlights the Parkway's historic importance, public engagement results, major goals, priorities, and objectives for the future of the Parkway, and a capital improvement plans for strategic areas along the Parkway, like the Alex George Wetland.

## CLIENT REFERENCE

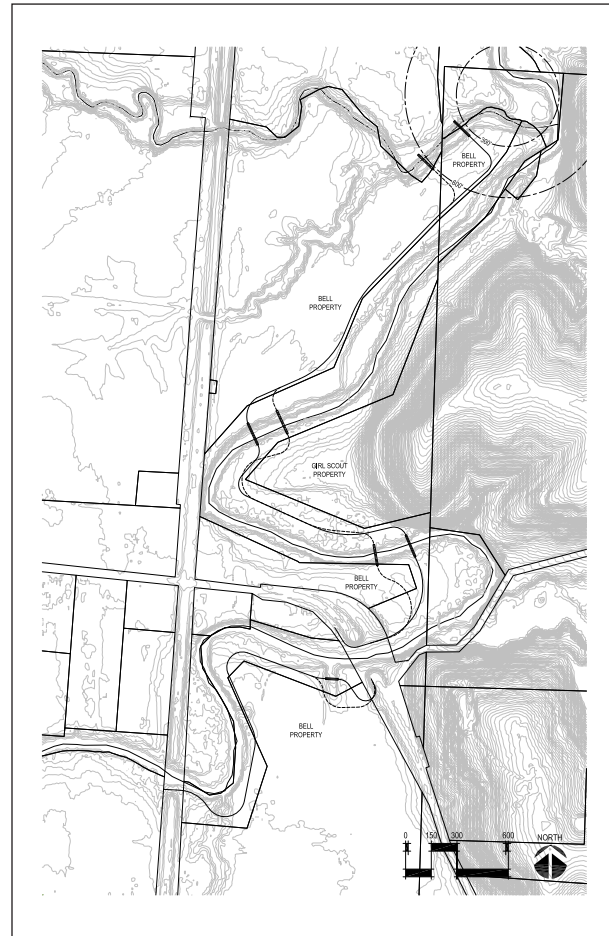
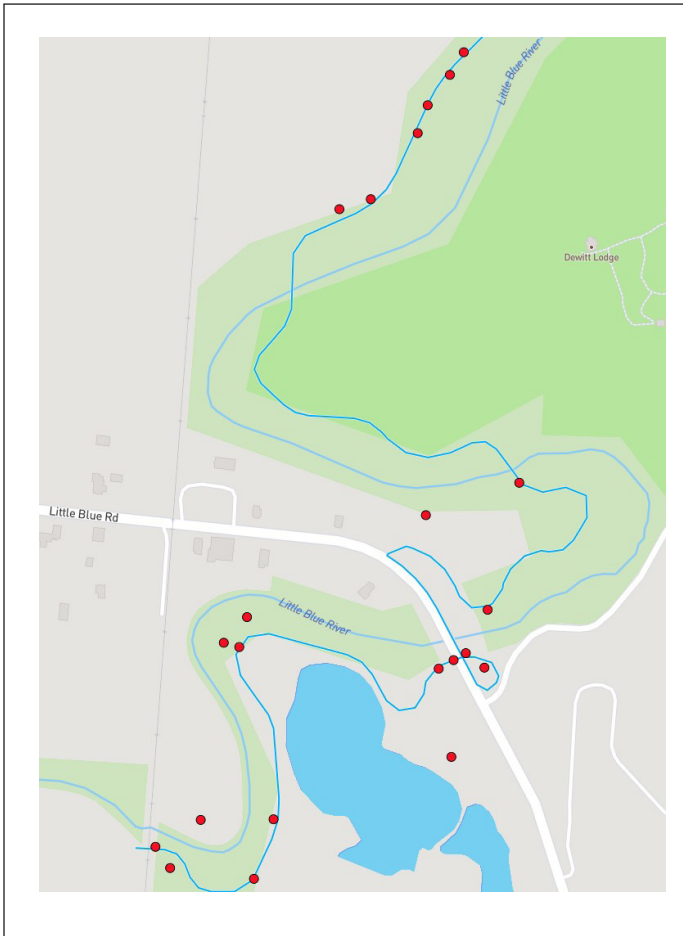
Brian P. Nowotny, Assistant Director  
 Jackson County Parks + Rec  
 22807 SW Woods Chapel Rd  
 Blue Springs, MO 64015  
 (816) 503-4803  
 BPNowotny@jacksongov.org



RELEVANT EXPERIENCE

# LITTLE BLUE TRACE TRAIL EXTENSION

JACKSON COUNTY, MISSOURI



The partially completed Little Blue Trace Trail will take users from Little Blue Trace County Park on the north to just south of Little Blue Road near the Union Pacific Railroad underpass – approximately 1.5 miles

Vireo, VSM Engineering and Lovelace Associates created a preliminary alignment for this section of the trail to follow the river, weaving through County-owned and private property, crossing the river where appropriate. The team worked closely with the County and private landowners to draft easements to maximize usability for both parties. In turn, settling on an alignment that allows trail users to fully experience the many different landscapes while traversing the Little Blue Trace Trail.

## CLIENT REFERENCES

Brian P. Nowotny, Assistant Director  
Jackson County Parks + Rec  
22807 SW Woods Chapel Rd  
Blue Springs, MO 64015  
(816) 503-4803  
BPNowotny@jacksongov.org

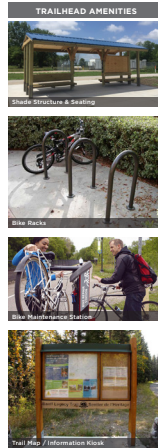
Lisa Donnelly, Superintendent of Park Planning and Development,  
816-503-4802  
LDonnelly@jacksongov.org



RELEVANT EXPERIENCE

# HARTMAN PARK ROCK ISLAND TRAILHEAD

LEE'S SUMMIT, MISSOURI



Hartman Park provides a vital link for people accessing the Rock Island Corridor, connecting communities in and around Lee's Summit. Vireo worked with the City to develop plans to improve trailhead amenities, pathways, landscaping, and ADA accessibility for future trail users. Amenities include seating, bike racks, a bike maintenance station, informational kiosk, water fountain, and a large shade structure.

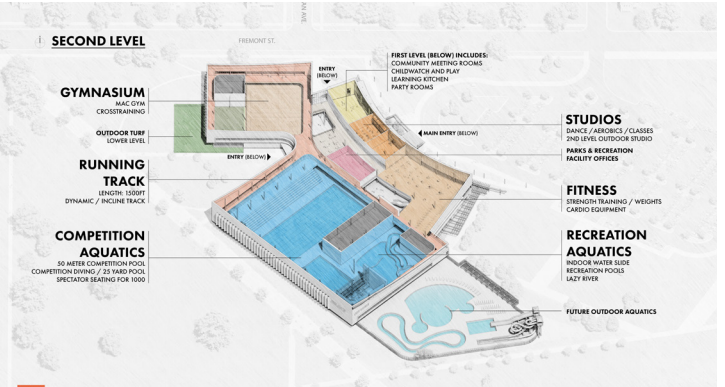
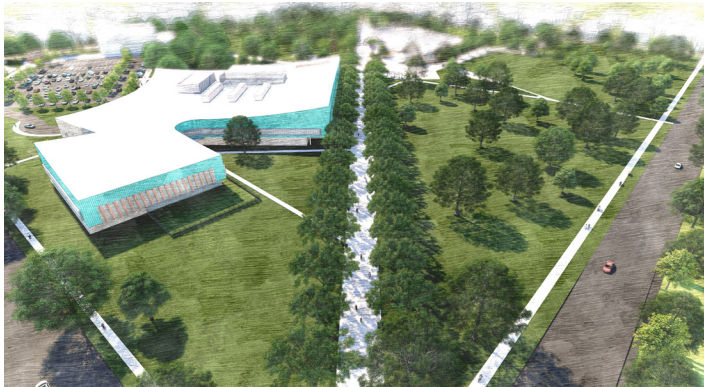
The park is also home to a playground, ballfields, restrooms, and shelter. The new accommodations and regional trail connection is expected to draw a multitude of additional users for decades to come. Vireo provided landscape architectural services from concept to construction documentation for the trail design and site restoration as well as public meeting assistance during design.

## CLIENT REFERENCE

Lee's Summit Parks and Recreation  
Steve Casey, Superintendent  
220 S.E. Green Street  
Lee's Summit, Missouri 64063  
(816) 969-1507

# MOVE MHK! PARKS & RECREATION MASTER PLAN

MANHATTAN, KANSAS



Vireo and the consulting team were tasked with developing a community-supported comprehensive plan that will guide long-range planning, decision making, and resources toward a clearly defined vision for Manhattan’s Parks & Recreation Department’s future. This 20-year plan includes the development and redevelopment of parks, facilities, open space, and recreation systems. The collaborative process included gathering input from the community, Parks and Recreation Staff, the Parks Advisory Board, a Steering Committee group, City Commission, and the Consultant Team.

The master plan document includes analysis of Manhattan demographics and trends, summary of all community engagement, park inventory, assessment, and analysis, recreation and program analysis, outdoor aquatics analysis and indoor aquatic feasibility, operations and staffing analysis, and an action plan with capital improvement costs for all parks in the system.

## CLIENT REFERENCE

Aaron Stewart, Director  
City of Manhattan, Kansas  
Parks and Recreation Department  
1101 Poyntz Avenue  
Manhattan, KS 66502  
(785) 587-2757

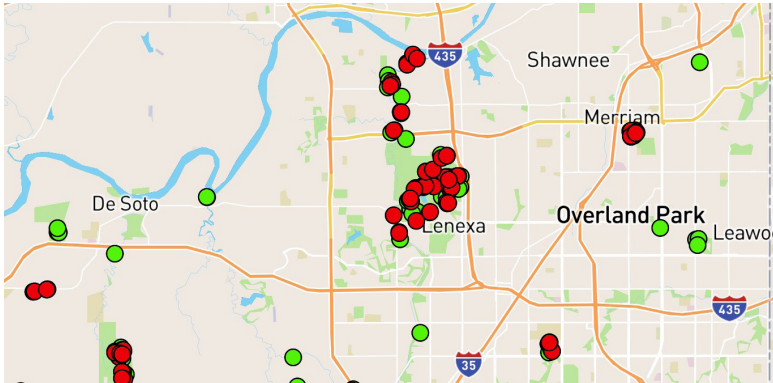




RELEVANT EXPERIENCE

# JOHNSON COUNTY PARKS & RECREATION DISTRICT STRATEGIC PLAN UPDATE

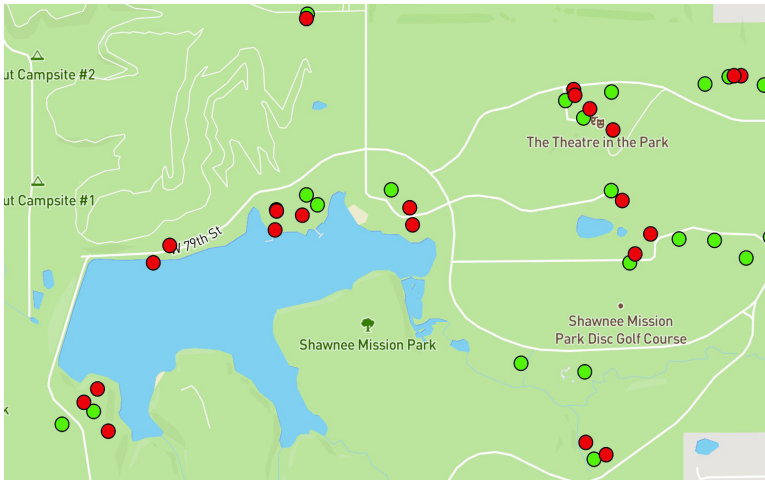
JOHNSON COUNTY, KANSAS



Online SWOT Survey



Historic Value or Potentially Contributing



- ▲ Shawnee Mission Park
- Shelter 10 Poor



Vireo, in collaboration with BerryDunn and ETC, assisted the Johnson County Parks and Recreation District in updating their Strategic Plan. The plan builds on the District’s Legacy Plan and its progress on meeting goals and objectives. The Strategic Plan is helping reassess and update recommendations and implementation strategies and establish goals and objectives for the next 15 years.

The team engaged elected and appointed officials, staff, businesses, community, and other stakeholders in ways that maximize creativity and innovation, and inspire collaboration and consensus for achieving the District’s vision. The team is conducting engagement through multiple channels, including in-person and virtual options. The team developed a project brand to generate interest and buy-in for the plan. This project also consists of land acquisition and resource protection analysis, structural analysis for historic value and preservation, and programs and services assessment. Recommendations generated will aid the District in preparing for its future.

## CLIENT REFERENCE

Johnson Co. Parks & Recreation  
Yolonda Guyton, Project Manager  
7900 Renner Road  
Shawnee Mission, KS 66219  
(913) 826-3429



RELEVANT EXPERIENCE

# LIONS MEMORIAL PARK PARK IMPROVEMENTS

KEARNEY, MISSOURI



Vireo in collaboration with Veenstra & Kim was hired by the City of Kearney for the planning and design of park improvements. Planning began in the fall of 2018 and was completed in June of 2021. The new and improved park features an all-new playground, new shelters, new restrooms, a walking trail, new parking, monument sign, fencing and a show-stopping splash pad.

Vireo led the team through the development of construction drawings, facilitated the bidding process, and managed construction administration and observation of the project. Vireo also coordinated and assisted with elements of the project pertaining to the LWCF Grant funding requirements.

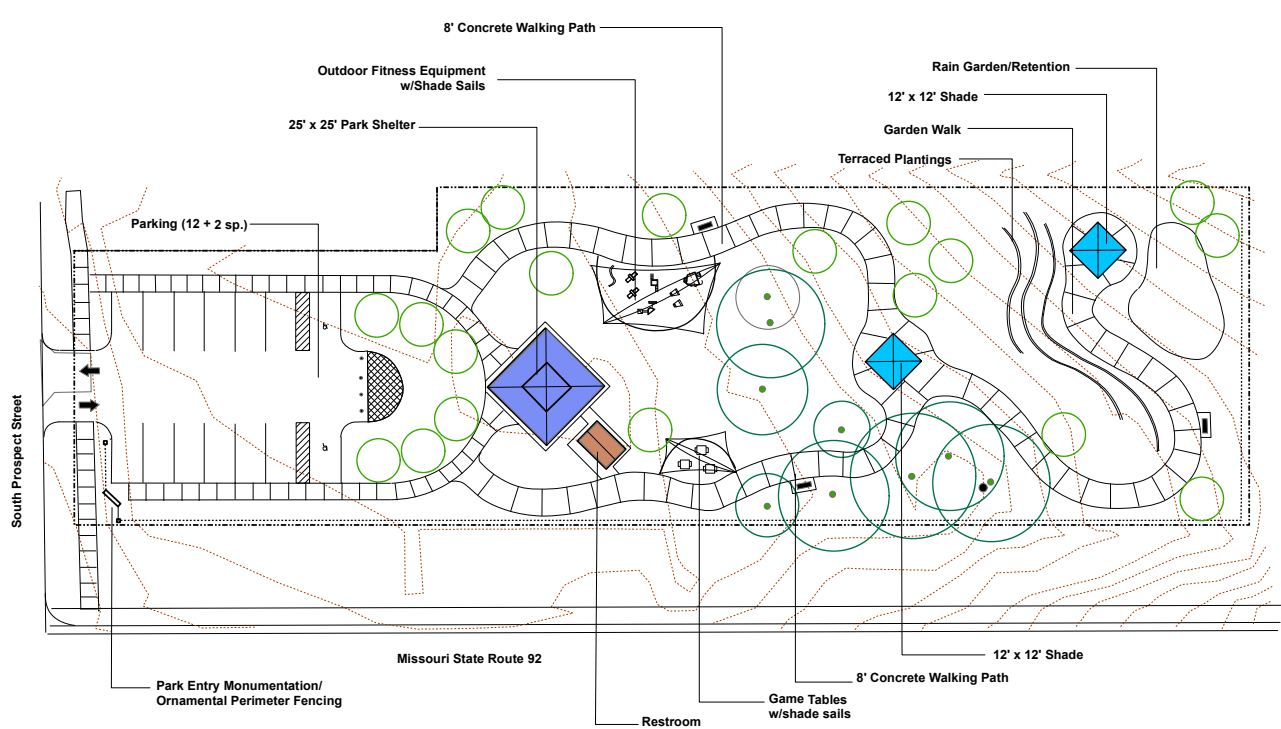
## CLIENT REFERENCE

City of Kearney, MO  
Eric Marshall, Director of Parks and  
Recreation  
100 East Washington  
Kearney, Missouri 64060  
(816) 903-4724



# HALL PARK ACTIVE OLDER ADULT PARK

KEARNEY, MISSOURI



Vireo is currently leading a team to prepare construction drawings for Hall Park in Kearney, MO. This project is similar in scale to a previous project Vireo led in Kearney, Lions Park. However, Hall park will be focused on the active older adult community and will feature a walking trail, a small fitness court, picnic shelter, and small picnic seating areas with shade. Also included is a new parking lot, pre-fabricated restroom, and decorative fencing along the park edge.

## CLIENT REFERENCE

City of Kearney, MO  
Eric Marshall, Director of Parks and Recreation  
100 East Washington  
Kearney, Missouri 64060  
(816) 903-4724



RELEVANT EXPERIENCE

# MOUSE CREEK GREENWAY & PARK WEST MASTER PLAN

LEE'S SUMMIT, MISSOURI



Vireo worked in collaboration with the Lee's Summit Parks Department to create design concept plans for a future community park and a future neighborhood park. Site visits and preliminary analysis were conducted to understand the context of the site, flood plain impacts, and long-range planning goals having impacts to the future of the site. Vireo developed preliminary concepts based on feedback received during a day long design charrette as well as public engagement with surrounding neighborhoods. The future Park West Community Park is planned to include 8 baseball/softball practice fields, 8 batting cages, 5 full size soccer practice fields, a fenced 5-acre off-leash dog park, 4 pickleball courts, picnic shelter, restrooms, 18-hole disc golf course through a wooded area, an entry drive and 108 stall parking lot, and over one mile of paved trail, including a loop around the perimeter of the park.

The future neighborhood park will include approximately 20 parking spaces, a multi-sport court including tennis, pickleball, and basketball courts, picnic shelter, restroom, playground, open green space, and paved trails looping the property and connecting the greenway trail to the future community park.

## CLIENT REFERENCE

Lee's Summit Parks and Recreation  
Steve Casey, Superintendent  
220 S.E. Green Street  
Lee's Summit, Missouri 64063  
(816) 969-1507



RELEVANT EXPERIENCE

# GARRETT PARK

SHAWNEE, KANSAS



Vireo was hired by the City of Shawnee to complete \$3.6 million dollar renovation to Garrett Park, a 33.5-acre park located on the western side of the city. The project included updating the playground, upgrading the ball fields and backstop, upgrading the basketball court, ADA improvements to the trail and restroom, new site work around the shelter and restoration of an historic structure.

Vireo attended community events to gather public input into the park renovations and worked with park department staff and the historic community to determine how to address the historic structure. Construction for the improvements is scheduled to occur in early 2025.

## CLIENT REFERENCE

Tonya Lecuru , Parks and  
Recreation Director  
13817 Johnson Drive  
Shawnee, KS 66216  
tlecuru@cityofshawnee.org  
913-742-6402



# KEY PERSONNEL RELEVANT EXPERIENCE

This chart details our key personnel, including their roles and relevant project experience as outlined in the following pages. Additionally, we have provided a list of consultants who have contributed to these projects.

VIREO KEY PERSONNEL & ROLES ON RELEVANT PROJECTS	Little Blue Trace Trail Extension	Blue River Parkway Master Plan	Hartman Park Rock Island Trailhead	JoCo Parks & Rec District Strategic Plan	Manhattan Parks & Rec Master Plan	Mouse Creek Greenway & Park West Master Plan	Lee's Summit Eagle Creek Neighborhood Park	Kearney Lion's Park	Kearney Hall Park	MARC Regional Green Infrastructure Framework	Garrett Park
Steve Rhoades Principal, Landscape Architect	X	X		X	X	X	X				X
Craig Rhodes Principal, Landscape Architect	X		X		X	X	X	X			
Larry Reynolds Project Manager				X	X	X	X	X	X		X
Madelyn Onofrio Landscape Design, Graphic Illustration		X									
Laurie Brown Conservation Ecologist, Natural Preservation	X	X		X							
Triveece Penelton Community Engagement		X		X						X	
Becca Nash Landscape Architect, Community Engagement	X	X	X								
<b>OTHER CONSULTANT PROJECT TEAM PROJECT EXPERIENCE</b>											
Hoxie Collective - Public Involvement										X	
VSM Engineering - Civil, Storm	X										
Strata Architecture - Architecture											X
Lovlace Associates - Survey	X										
Veenstra & Kimm - Civil/Survey								X	X		
McClure - Civil/Survey						X	X				
SFS Architecture - Architecture				X	X						
Berry Dunn - Parks & Rec Strategic				X	X						
ETC - Public Opinion Survey				X	X						



## STEVE RHOADES PLA

Principal-In-Charge | Landscape Architect

Steve Rhoades is a recognized leader in the field of planning and design for parks, trails and public spaces of all types. Over the past three decades, Steve has dedicated his professional efforts to creating parks and trails that connect communities and help the residents live healthier, more active lives. From national parks to neighborhood playgrounds, Steve is committed to creating solutions that are environmentally sound, respond to the best use possible for the community, embody the principles of Smart Growth and ideally serve the needs of the client.

For the Jackson County On-Call, he will be the Principal in Charge and primary point of contact. In this role, he will oversee all projects that are assigned to Vireo, ensuring all the appropriate firm resources are available for each task. Above all, he will be responsible for creating collaborative teams for all projects, regardless of size, that thoroughly investigate current conditions, apply a vision, and create possibilities for county leaders to consider.

### EDUCATION

Bachelor of Landscape  
Architecture, Kansas State  
University, 1993

Charrette Planner  
Certification, National  
Charrette Institute, 2006

Knight Fellowship &  
Community Building, University  
of Miami, 2005-06

### CERTIFICATIONS

PLA - MO, KS, OK, IA, NE, CO

### AFFILIATIONS

American Society of  
Landscape Architects, Prairie  
Gateway Chapter

National Recreation & Park  
Association

Society of American Military  
Engineers, Kansas City Post

Downtown Council Public  
Improvements Advisory  
Committee, Kansas City, MO

Urban Land Institute

### EXPERIENCE

22 Years with Vireo

### SIMILAR PROJECT EXPERIENCE

Little Blue Trace Extension | Jackson County, Missouri

Blue River Parkway Master Plan | Jackson County, Missouri

Johnson County Parks & Rec District Strategic Plan | Johnson County,  
Kansas

Manhattan Parks & Rec Master Plan | Manhattan, Kansas

Mouse Creek Greenway & Park West Master Plan | Lee's Summit,  
Missouri

Lee's Summit Eagle Creek Neighborhood Park | Lee's Summit, MO

Garrett Park | Shawnee, Kansas

Johnson County Park & Recreation District Operations & Maintenance  
Plan | Johnson County, Kansas

Kechi Park System Master Plan | Kechi, Kansas

Maryland Heights Parks & Recreation Master Plan | Maryland Heights,  
Missouri

Kearney Lion's Memorial Park | Kearney, Missouri

Parkville Parks System Master Plan | Parkville, Missouri

Cameron Parks Master Plan | Cameron, Missouri

Meadowmere Park Splash Park, Playground, & Amphitheater |  
Grandview, Missouri

Liberty Parks & Recreation Rejuvenation Master Plan | Liberty, Missouri

Ferguson Parks Master Plan | Ferguson, Missouri

Kearney Hall Park Design & Implementation | Kearney, Missouri



## CRAIG RHODES PLA

Principal-In-Charge | Landscape Architect

Craig's responsibility at Vireo is to ensure our clients are getting creative and sustainable solutions on time, within budget, and in line with Vireo's high standards. Craig also excels at establishing and maintaining clear lines of communication with clients, multi-disciplinary teams and government agencies.

His experience includes a wide variety of project types including parks and public spaces; bicycle and pedestrian trail planning and design; commercial development; stormwater BMPs; streetscapes; community and residential planning; and sports and recreation complexes.

For the Jackson County On-Call, he will work in conjunction with Steve, both acting as Principal in Charge of their respective projects, allowing for multiple projects to have active leadership involvement. On all projects, Craig will be responsible for ensuring all necessary firm resources are available for each task.

### EDUCATION

Bachelor of Landscape  
Architecture, Kansas State  
University, 1993

### CERTIFICATIONS

PLA - MO, KS

### EXPERIENCE

22 Years with Vireo

### SIMILAR PROJECT EXPERIENCE

Little Blue Trace Extension | Jackson County, Missouri

Hartman Park Trailhead | Lee's Summit, Missouri

Strang Park Master Plan and Inclusive Playground | Overland Park, Kansas

Manhattan Parks & Rec Master Plan | Manhattan, Kansas

Mouse Creek Greenway & Park West Master Plan | Lee's Summit, Missouri

Lee's Summit Eagle Creek Neighborhood Park | Lee's Summit, Missouri

Cameron Community Park | Cameron, Missouri

Liberty City Park Master Plan and Inclusive Playground | Liberty, Missouri

Lansing Bernard Park and City Park Improvements | Lansing, Kansas

Kearney Lion's Memorial Park | Kearney, Missouri

Serenity Garden @ Ronald McDonald House | Kansas City, Missouri

Veteran's Park | Spring Hill, Kansas

Camp Branch Park Master Plan | Johnson County, Kansas

Searcy Creek Greenway Master Plan | Kansas City, Missouri

Camp Prairie Schooner Aquatic Center | Kansas City, Missouri

Meadowmere Splash Park | Grandview, Missouri

Meadowmere Destination Playground | Grandview, Missouri

John C. O'Renck Park | Sugar Creek, Missouri

Black Hoof Park / Lake Lenexa | Lenexa, Kansas

Penn Valley Park Lake & Drive | Kansas City, Missouri





# LARRY REYNOLDS PLA

Project Manager | Landscape Architect - Park Specialist

Larry is a Landscape Architect with over 18 years of experience working in park planning and design. Larry focuses on delivering process and products, which are tailor made, engaging, user-friendly, clear and concise, and based on relevant evidence-based data. Larry has developed system-wide Park Master Plans as well as Park Operations and Maintenance Plans for parks departments across Missouri and Kansas. From a design perspective, Larry has an eye for weaving recreational land use into the fabric of urban spaces to support economic vitality, increase social equity, and promote health and well being. Larry has managed numerous park design projects from concept through construction with many including a robust public engagement process, meeting facilitation and focus groups. Larry has designed campuses, plazas, courtyards, patios, trails, and rooftop gardens.

## EDUCATION

Masters of Landscape  
Architecture, Kansas State  
University, 2007

Bachelor of Arts, William  
Jewel College, 2000

## CERTIFICATIONS

PLA - MO

## EXPERIENCE

16 Years with Vireo

## SIMILAR PROJECT EXPERIENCE

Cameron Community Park & Sports Complex | Cameron, Missouri

Mouse Creek Greenway & Park West Master Plan | Lee's Summit,  
Missouri

Strang Park Master Plan & Redesign | Overland Park, Kansas

Lansing Bernard Community Park | Lansing, Kansas

Liberty City Park Inclusive Playground | Liberty, Missouri

Spring Hill Park Master Plan | Spring Hill, Kansas

Spring Hill Veteran's Park | Spring Hill, Kansas

Johnson County Park & Recreation District Operations & Maintenance  
Plan | Johnson County, Kansas

Stillwell Park - Inclusive Playground Design | Stillwell, Kansas

Shawnee Mission Park - Inclusive Playground Design | Lenexa, Kansas

Kechi Park System Master Plan | Kechi, Kansas

Papillion Parks & Recreation Master Plan | Papillion, Nebraska

Maryland Heights Parks & Recreation Master Plan | Maryland Heights,  
Missouri

Kearney Lion's Memorial Park | Kearney, Missouri

Parkville Parks System Master Plan | Parkville, Missouri

Cameron Parks Master Plan | Cameron, Missouri

Meadowmere Park Splash Park, Playground, & Amphitheater |  
Grandview, Missouri

Liberty Parks & Recreation Rejuvenation Master Plan | Liberty, Missouri

Salina Parks System Master Plan | Salina, Kansas

Wyandotte County Parks System Master Plan | Wyandotte County/  
Kansas



## MADELYN ONOFRIO

Landscape Architect | Graphic Illustration

A skilled designer with a passion for creating functional and aesthetically pleasing spaces, Madelyn has been a key contributor to Vireo since 2021. Her diverse project experience, ranging from dog parks to hospital landscapes, showcases her versatility.

With a strong foundation in landscape and building design, as well as print and digital media, Madelyn effectively collaborates with various teams to deliver impactful results. She also actively participates in community engagement strategies, demonstrating her commitment to creating positive and sustainable environments.

### EDUCATION

Masters of Landscape  
Architecture, Kansas State  
University, 2021

### EXPERIENCE

4 Years with Vireo

### SIMILAR PROJECT EXPERIENCE

Blue River Parkway Master Plan | Jackson County, Missouri

Community Park & Sports Complex | Cameron, Missouri

Mouse Creek Greenway & Park West Master Plan | Lee's Summit,  
Missouri

Strang Park Master Plan & Redesign | Overland Park, Kansas

Lansing Bernard Community Park | Lansing, Kansas

Ferguson Parks Master Plan | Ferguson, Missouri

Winnebago Tribe of Nebraska Childcare | Winnebago, Nebraska

USDA/NRCS Preliminary Investigation Feasibility Reports (PIFRs) |  
Midland and Hays Counties, Texas

Blue River Greenway Visioning and Case Study | Jackson County,  
Missouri and Johnson County, Kansas

Blue River Parkway Master Plan | Kansas City, Missouri

Crestwood Parks and Recreation Master Plan | Crestwood, Missouri

KCMO Riverfront Development | Kansas City, Missouri

Berkley Park Beer Garden | Kansas City, Missouri

Front Street Trail Phase 2 | Kansas City, Missouri

Gladstone Dog Park | Gladstone, Missouri

Greenline Multimodal Corridor Feasibility Study | Kansas City, Missouri

KDOT Statewide Active Transportation Plan | State of Kansas

Garden City Comprehensive Plan | Garden City, Kansas

Platte Landing Park Ballfield Public Engagement | Parkville, Missouri



# LAURIE BROWN

LEED AP

Conservation Ecologist | Natural Preservation Specialist

Laurie is an ecologist with over 27 years of professional experience in natural resource, ecological and urban planning, design and public policy. She is involved in natural resources related projects including ecosystem and cultural landscape restoration, natural resource inventories, and native landscaping in Kansas, Missouri, and Nebraska. Laurie has extensive experience in conducting biological surveys and environmental assessments, stream asset inventories, stream stabilization and restoration, and wetland design and construction. She is involved in regional and local green infrastructure planning and design, wetland delineations, environmental permitting, and native landscaping of development sites for municipalities and counties. She has provided environmental permitting services for projects for over 10 years.

She is certified as a Qualified Scientist for the Nebraska Department of Transportation, a US Army Corps of Engineers trained wetland delineator, and has training and deep experience in completing National Environmental Policy Act (NEPA) documentation for federal projects.

## EDUCATION

Masters of Community & Regional Planning, Iowa State University - Ames, 2010

Veterinary Science - Graduate School, University of Wisconsin - Madison, 1992

Bachelor of Science in Zoology, University of Washington - Seattle 1987

## CERTIFICATIONS

LEED AP  
NDOT Qualified Scientist

## EXPERIENCE

22 Years with Vireo

## SIMILAR PROJECT EXPERIENCE

Little Blue Trace Trail Extension | Jackson County, Missouri

Blue River Parkway Master Plan | Jackson County, Missouri

Johnson County Parks & Rec District Strategic Plan | Johnson County, Kansas

Strang Park Master Plan and Implementation | Overland Park, Kansas

Camp Branch Park Master Plan | Johnson County, Kansas

Cameron Community Park | Cameron, Missouri

Spring Hill Park Master Plan | Spring Hill, Kansas

Missouri State Park Playgrounds - West Region | State of Missouri

Ernie Miller Park & Nature Center Phase 1 Implementation | Olathe, Kansas

NGPC Dead Timber State Rec Area Master Plan | Dodge County, Nebraska

Resource Recovery Park Master Plan | Lees Summit, Missouri

Parkville Bottoms Section 1135 Ecosystem Restoration | Parkville Missouri

Prairie Band Potawatomi Nation Integrated Feasibility Study | Mayetta, Kansas

Ferguson Parks Master Plan | Ferguson Missouri

Parkville Riverfront Parks Master Plan | Parkville Missouri

Kansas City Zoo Aquarium | Kansas City, Missouri

Maryland Heights Parks & Recreation Master Plan | Maryland Heights, Missouri



# TRIVEECE PENELTON

 AICP, NOMA

Planner | Engagement Specialist

Triveece is a city planner and public involvement innovator. She's also the creator of the Digicate® software application for community engagement. Triveece works with community organizations and government agencies alike to create and deploy rich community engagement plans that embrace the community and give city/county leaders the input they need to design places that truly are for the people.

Her projects blend community planning with intensive public engagement, education, information sharing, messaging, and branding. Her strengths lie in developing and executing planning/engagement processes that use creative and innovative tools. Her work has won the APWA National Exceptional Performance Award - Journalism, MOVITE Excellence in Transportation Achievement Award, WTS Rosa Parks Diversity Leadership Award, NOMA NAACP Seed Award for Justice, Equity, Diversity and Inclusion in Design, and ASHTO TransComm Award - Video Production Series.

Prior to joining Vireo, Triveece served as a long-range planner with Kansas City, Missouri's Planning and Development Department in its Planning, Preservation and Urban Design Division. Her work involved detailed analysis of changing community issues and urban design guideline implementation.

## EDUCATION

Masters of Urban Planning,  
University of Kansas, 2002

Bachelor of Architectural  
Studies, University of Kansas,  
2000

## AFFILIATIONS

Board of Directors, Design  
Corps, 2022-2025

Community Planning  
Assistance Team, American  
Planning Association, 2017

Advisory Board - Department  
of Urban Planning, University  
of Kansas School of Public  
Affairs and Administration,  
2009-Present

## EXPERIENCE

20 Years with Vireo

## SIMILAR PROJECT EXPERIENCE

Blue River Parkway Master Plan | Jackson County, Missouri

Johnson County Parks & Rec District Strategic Plan | Johnson County,  
Kansas

Lee's Summit Greenway Plan | Lee's Summit, Missouri

Camp Branch Parks Master Plan | Stilwell, Kansas

Ernie Miller Park & Nature Center Master Plan | Olathe, Kansas

Timber Ridge Adventure Center Master Plan Update | Johnson County,  
Kansas

Timber Ridge Adventure Center | Johnson County, Kansas

Blue River Integrated Planning & Feasibility Study

KC Spirit Playbook Comprehensive Plan | Kansas City, Missouri

Stillwell Community Park Inclusive Playground | Stilwell, Kansas

Shawnee Mission Park Inclusive Playground | Shawnee, Kansas

Johnson County Square | Olathe, Kansas

Envision Comanche Park Master Plan | Tulsa Housing Authority

Riverfront Parks and Recreation Master Plan | Parkville, Missouri

Overland Park Safe Bicycle Use Outreach | Overland Park, Kansas

Liberty Parks and Recreation Rejuvenation Master Plan | Liberty,  
Missouri

Meadowmere Park | Grandview, Missouri

Independence Park System Master Plan | Independence, Missouri





## BECCA NASH AICP, NOMA

Landscape Architect | Engagement Specialist

Working in partnership with Vireo's landscape architects, planners, and ecologists, Becca brings a unique perspective with a background in landscape architecture, zoology, and environmental design. During her time at Vireo, she has collaborated on environmental assessments, park design and implementation, and public engagement. She is involved in projects from the assessment phase through final design and development of construction documentation. Her ability to see things on the grander scale helps ground the project, while letting the details shine. She has produced numerous graphic renderings, which have helped clients and communities better visualize and understand the functionality and aesthetics of the proposed designs.

Before Vireo, Becca spent time in zoo design. Working with animal care teams, creating environments that meet their needs, physically and mentally, while enhancing the natural landscape. She is passionate about creating spaces that function for everyone who needs them. Designing with as much emphasis on the wildlife as for the people who visit.

### EDUCATION

Bachelor of Science in  
Environmental Design &  
Zoology, North Dakota State  
University, 2018

Bachelor of Landscape  
Architecture, North Dakota  
State University 2018

### EXPERIENCE

6 Years with Vireo

### SIMILAR PROJECT EXPERIENCE

Little Blue Trace Extension | Jackson County, Missouri  
Blue River Parkway Master Plan | Jackson County, Missouri  
Hartman Park Trailhead | Lee's Summit, Missouri  
Resource Recovery Park Master Plan | Lees Summit, Missouri  
Strang Park Master Plan and Implementation | Overland Park, Kansas  
Liberty City Park Inclusive Playground | Liberty, Missouri  
Camp Branch Park Master Plan | Johnson County, Kansas  
Cameron Community Park | Cameron, Missouri  
Ernie Miller Park & Nature Center Phase 1 Implementation | Olathe, Kansas  
Bernard Community Park | Lansing, Kansas  
Spring Hill Park Master Plan | Spring Hill, Kansas  
JCPRD Operations & Maintenance Plan | Johnson County, Kansas  
Missouri State Park Playgrounds - West Region | State of Missouri  
NGPC Dead Timber State Rec Area Master Plan | Dodge County, Nebraska  
Parkville Bottoms Section 1135 Ecosystem Restoration | Parkville Missouri  
Ferguson Parks Master Plan | Ferguson Missouri  
Parkville Riverfront Parks Master Plan | Parkville Missouri  
Kansas City Zoo Aquarium | Kansas City, Missouri



# SIMILAR CONTRACTS REFERENCES



## Johnson County, Kansas On-Call

### **Bill Maasen**

Superintendent of Parks & Golf Courses  
Johnson County Park & Recreation District  
7900 Renner Road  
Shawnee Mission, KS 66219  
bill.maasen@jocogov.org  
(913) 826-3437



## Lee's Summit, Missouri On-Call

### **Steve Casey**

Superintendent of Park Planning  
City of Lee's Summit, MO  
220 S.E. Green Street  
Lee's Summit, MO  
Stephen.Casey@cityofls.net  
(816) 969-1507



## Overland Park, Kansas On-Call

### **Mike Burton**

Project Manager  
City of Overland Park, Kansas  
8500 Santa Fe Drive  
Overland Park, KS 66212  
mike.burton@opkansas.org  
(913) 327-6638





# PROJECT UNDERSTANDING

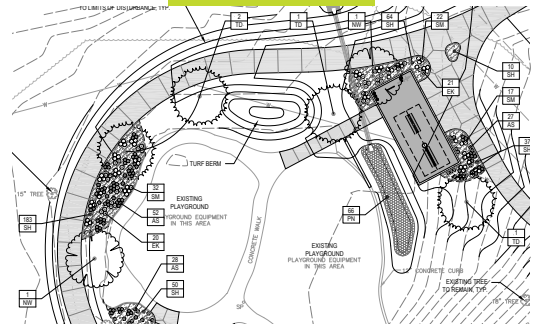
With any on-call contract, Vireo understands that each task order will have a different scope and the approach must be tailored to each specific task at hand. We will work with Jackson County Parks + Rec early on to create a specific process that uses successful techniques to ensure you achieve the results you desire.

As stated in the RFQ, we understand projects may include master plan development and implementation for parks, trail extensions, and park infrastructure such as parking lots, restrooms, playgrounds, and picnic areas. Types of projects or activities may also include but are not limited to: park design and master planning, multi-use bicycle and pedestrian transportation facilities design, engineering, and construction specifications development, concept plans, preparation of concept and cost estimates for site design alternatives, various revisions and redlines based on staff recommendations, feasibility studies for park, parking lot, trail, amenity, and athletic facility improvements, condition assessments and inventories, circulation studies, scenario planning, acquisition of documentation for right-of-way or easements, project prioritization/phasing, production of biddable construction document packages, including site plans, planting plans, lighting plans, grading plans, cost estimates, and interpretative signage and wayfinding.

Additional information that may be needed for a specific/individual projects shall be included in the scope of work. Any survey, design and subsurface information provided by the County is subject to the limitation as stated therein and must be validated and augmented as necessary for final design.

We understand the County may also require the following services on an as needed, step by step basis throughout the term of the contract:

- Provide design professionals familiar with regulatory design agencies (i.e. MoDot, MDC, etc.) design criteria for public improvement projects, technical specifications, and design requirements. Final plans must be sealed by a licensed professional in the State of Missouri (PE and/or PLA).
- A professional Land Surveyor licensed in the State of Missouri is to be responsible for all surveying services, including but not limited to: Document preparation necessary for acquisition of easements and right-of-way, topographic information, horizontal and vertical controls.
- Site Analysis and Pre-Planning Services, including evaluation of existing site conditions, topography, geotechnical data, storm water, land-use, utility, and transportation, and other site-related factors.
- Coordination and preparation of any state/federal review or permitting needs, including NEPA processes, including but not limited to "No Rise Certification" for Bridges, 404 permitting, Section 106 or other related needs. Vireo will also be responsible for compliance with all applicable standards and codes.





## UNDERSTANDING OF SCOPE

Vireo will, as needed, provide the following on-call services as stated in the RFQ document.

- Assistance with the preparation of state/federal/private funding initiatives, including conceptual design, needs analysis, public engagement, and proposal preparation.
- Trail Planning and Design Services, including, preliminary, design development, and final landscape architectural and engineering planning, design, and construction document development services.
- Public Engagement Services such as hosting public meetings, conducting citizen surveys, preparing materials and graphics for presentation and hosting focus groups.
- Cost Estimating Services, including, site, utility, facility, infrastructure, and equipment construction and procurement.
- Other miscellaneous testing, survey and inspection services as required to complete the projects.
- Other Parks + Rec planning, design, and engineering services.

Vireo practices innovation within a reliable project approach framework that is tailored to fit each project scope, site and budget. This approach delivers projects with a balance of innovation, functionality, and maintainability. Each of the projects highlighted in our response began within this framework and in general followed this process.

### **PRE-DESIGN: Observe, Listen, Capture, Learn**

Highly participatory with a focus on facilitating reflective discussion and enabling collaboration with an early emphasis on clients/users/stakeholders, and includes the following:

- Scheduled brainstorming sessions to determine goals of the project, understand maintenance capacity, define the project budget, explore the possibilities, and understand project constraints.
- Collect site information and initiate conversation with the County on design

### **DESIGN: Imagine, Test, Question and Refine**

Highly participatory and collaborative includes the following:

- Creating design alternatives with preliminary costs
- Evaluating alternatives to arrive at a preferred design and budget, continue conversation with the County on design direction
- Testing of the design and appropriate refinement
- Taking the refined design through the County review process

### **DOCUMENTATION/IMPLEMENTATION**

Less participatory and more implementation-oriented to bring the client's goals to reality:

- Development of Construction Drawings and Specifications
- Bidding Services
- Construction Administration







# AVAILABILITY TEAM AND RESOURCES

While the experience and resources of our firm are important, it is our people who ultimately make the difference. Our firm philosophy is to bring the best and most experienced individuals to each project, within a simple and clear organizational structure. To this end, we have identified key personnel with a demonstrated record of past project performance on tasks similar to those required for this on-call contract (see resumes in the previous section).

We have developed sound internal controls and processes to ensure each project, regardless of size, is completed successfully, on budget, and on schedule. Our project teams are structured to have ample capacity to manage all aspects of the project. As such, our proposed key personnel will be supported by additional staff as needed to ensure quality.

As a firm rooted in Jackson County, we take seriously our contribution to supporting the local community. Our entire project team has the capacity to complete multiple concurrent projects, and the timing of this on-call services contract will fit perfectly within our available capacity. We look forward to providing our services to Jackson County Parks + Rec.





# QUALITY ASSURANCE PLAN

Vireo is committed to performing services and delivering work products in accordance with the highest standards of quality for its industry. Vireo owes its clients valuable services and products, and our reputation depends on the quality of our work. To ensure that every work product meets or exceeds this standard, Vireo developed a rigorous Quality Assurance/Quality Control (QA/QC) process.

All deliverables undergo a QA/QC review. The level of review detail depends on the type and complexity of the deliverable and the work performed, with greatest scrutiny provided for design projects and complex, formal scientific reports and planning documents.

Technical reports and analysis are regularly reviewed by an in-house technical editor before submission to our clients. Vireo assigns responsibilities and accountability at each level of analysis and review. Our approach encompasses both the informal needs for professional research and analysis as well as the stringent requirements of formal QA/QC demanding for primary data collection and analysis, record keeping and auditing.

Vireo's QA/QC process has been incorporated into over 1,500 successful projects during the past 20+ years. Our high-quality site designs have been constructed and are providing value to communities across the region and nationally. In addition, Vireo has earned over 40 prestigious national, state, and local awards for its work.

