

Request for Legislative Action

Res. #20959
Sponsor: Tony Miller
Date: May 23, 2022

Completed by County Counselor's Office

Action Requested:	Resolution	Res.Ord No.:	20959
Sponsor(s):	Tony Miller	Legislature Meeting Date:	5/23/2022

Introduction

Action Items: ['Authorize']

Project/Title:

Authorizing the purchase of two (2) Bobcat Compact Track Loaders and attachments for use by the Parks + Rec department in the amount of \$140,994 under the terms and conditions of an existing competitively bid contract.

Request Summary

Pursuant to Section 1030.4 of the Jackson County Code, Parks + Rec and the Purchasing Department recommend the purchase of one (1) T450 T4 V2 Bobcat Compact Track Loader with attachments at a cost of \$50,609 and one (1) T770 T4 Bobcat Compact Track Loader with attachments for \$90,385. The two Track Loaders would be purchased from Clark Equipment Company, under the terms and conditions of the Missouri State NASPO Construction Contract CC190249002, an existing competitively bid government contract. This Missouri NASPO contract offers a 30% discount on the desired equipment and a 24% discount on the attachments which are reflected on the quote AMS-04737v3 dated May 2, 2022 and AMS-04736v4 dated May 2, 2022. The T450 track loader will be used to help properly maintain and make repairs for the recently constructed 14+ miles of the Rock Island Trail. The T770 track loader will be used throughout the park system for light construction, repairs and maintenance for other improved trails, park roads, parking lots and for snow duty during the winter for Independence County facilities.

The Dealer PDI, freight charges and materials and logistics fees on the quotes are addressed in the NASPO Construction contract under Section 5 of Exhibit B – Scope of Work. A copy of the email from Chris Gerving, Government Account Manager, Bobcat Company explaining the fees is attached. Funding is available within the Department's approved 2022 Budget, Account 1010-003-58110 for this purchase.

The cited NASPO Construction Contract CC190249002 and quotes are attached are for review and reference.

Contact Information

Department:	Parks + Rec	Submitted Date:	3/31/2022
Name:	Brian Nowotny	Email:	bpnnowotny@jacksongov.org
Title:	Deputy Director, Parks	Phone:	816-503-4803

Budget Information

Request for Legislative Action

Amount authorized by this legislation this fiscal year:	\$140,994		
Amount previously authorized this fiscal year:	\$ 0		
Total amount authorized after this legislative action:	\$140,994		
Is it transferring fund?	No		
Single Source Funding:			
Fund:	Department:	Line Item Account:	Amount:
003 (Park Fund)	1010 (Parks - Fleet Replacement)	58110 (Heavy Machinery & Equipment)	\$140,994

Prior Legislation	
Prior Ordinances	
Ordinance:	Ordinance date:
Prior Resolution	
Resolution:	Resolution date:

Purchasing	
Does this RLA include the purchase or lease of supplies, materials, equipment or services?	Yes
Chapter 10 Justification:	Fixed Price Contract
Core 4 Tax Clearance Completed:	Yes
Certificate of Foreign Corporation Received:	Yes
Have all required attachments been included in this RLA?	Yes

Compliance	
Certificate of Compliance	
In Compliance	
Minority, Women and Veteran Owned Business Program	
Goals Not Applicable for following reason: Contract is with another government agency	
MBE:	.00%
WBE:	.00%
VBE:	.00%
Prevailing Wage	
Not Applicable	

Request for Legislative Action

Fiscal Information

- There is a balance otherwise unencumbered to the credit of the appropriation to which the expenditure is chargeable and there is a cash balance otherwise unencumbered.

Request for Legislative Action

This eRLA has been previously submitted and restarted. Original comments are below.

Brian Nowotny at 3/31/2022 2:24:43 PM - [Submitted |]Department Director: Michele Newman at 4/3/2022 9:10:19 AM - [Approved |]Finance (Purchasing): Barbara J. Casamento at 4/4/2022 9:19:18 AM - [Returned for more information | The Quotes include "dealer pdi" ; "freight charges" and "materials and logistics" charges. The contract pages attached do not appear to include these items. Please point out where these charges are included in the contract and attach those pages or have them removed from the quote.]

New comments begin here.

Submitted by Parks + Rec requestor: Brian Nowotny on 3/31/2022. Comments:

Approved by Department Approver Michele Newman on 5/3/2022 9:07:38 AM. Comments:

Returned for more information by Purchasing Office Approver Craig A. Reich on 5/3/2022 9:17:12 AM. Comments: Returned per request of ERLA facilitator.

Submitted by Requestor Kay D. Norris on 5/3/2022 9:42:43 AM. Comments: 5.3.22 Added documents without special characters and resubmitted. kn

Approved by Department Approver Michele Newman on 5/4/2022 1:57:44 PM. Comments:

Approved by Purchasing Office Approver Barbara J. Casamento on 5/5/2022 8:33:32 AM. Comments:

Returned for more information by Compliance Office Approver Katie M. Bartle on 5/5/2022 9:14:41 AM. Comments: Clark Equipment Company is not in compliance. They can go to <https://jacomocompliance.com/login.php> to submit an application for a Certificate of Compliance. KMB

Submitted by Requestor Kay D. Norris on 5/11/2022 10:39:41 AM. Comments: 5.11.22 Clark Equipment has completed the on-line application for a Compliance Certificate on 5.10.22. kn

Approved by Department Approver Michele Newman on 5/11/2022 10:51:27 AM. Comments:

Approved by Purchasing Office Approver Barbara J. Casamento on 5/11/2022 11:05:10 AM. Comments:

Approved by Compliance Office Approver Katie M. Bartle on 5/13/2022 2:39:21 PM. Comments:

Approved by Budget Office Approver Mark Lang on 5/13/2022 3:54:43 PM. Comments: The fiscal note is attached.

May 18, 2022

eRLA #463

Page 4 of 4

Approved by Executive Office Approver Troy Schulte on 5/13/2022 4:20:00 PM. Comments:



Bobcat

Product Quotation

Quotation Number: AMS-04737v3

Date: 2022-05-02 13:24:36

Customer Name/Address:	Bobcat Delivering Dealer	ORDERS TO BE PLACED WITH: Contract Holder/Manufacturer
JACKSON COUNTY PARKS & RECREATION 293129 22807 Sw Woods Chapel Rd Blue Springs, MO 64015-9799	K.C. Bobcat, Blue Springs, MO 1450 SE US 40 Hwy BLUE SPRINGS MO 64014 Phone: (816) 229-4006 Fax: (816) 229-7631	Clark Equipment Company dba Bobcat Company 250 E Beaton Dr West Fargo, ND 58078 Phone: 701-241-8719 Fax: 855-608-0681 Contact: Heather Messmer Heather.Messmer@doosan.com

Description	Part No	Qty	SLP	Discount	Total	
T450 T4 V2 Bobcat Compact Track Loader	M0209	1	\$52,497.00	30%	\$36,747.90	
Factory Installed	P26 Performance Package	M0209-P06-P26	1	\$3,295.00	30%	\$2,306.50
	C33 Comfort Package	M0209-P07-C33	1	\$5,462.00	30%	\$3,823.40
	Selectable Joystick Controls	M0209-R01-C04	1	\$795.00	30%	\$556.50
Attachments	62" Heavy Duty Bucket	7272678	1	\$1,183.00	24%	\$899.08
	--- Standard Bolt-on tooth kit	7355991	7	\$52.08	--	\$364.56
	2.5K Standard Duty Pallet Fork Frame	7297499	1	\$395.00	24%	\$300.20
	--- 42" 2.5k Standard Duty Pallet Fork Teeth	7308798	1	\$330.00	24%	\$250.80
Total of Items Quoted					\$45,248.94	
Dealer P.D.I.					\$200.00	
Freight Charges					\$742.00	
Dealer Assembly Charges					\$133.00	
Other Charges: Material and Logistics					\$4,285.00	
Quote Total - US dollars					\$50,608.94	

*Prices per the Missouri NASPO Construction - CC190249002

*Terms Net 60 Days. Credit cards accepted.

*FOB Destination

*State Sales Taxes apply. IF Tax Exempt, please include Tax Exempt Certificate with order.

*TID# 38-0425350

***Orders Must Be Placed with Clark Equipment Company dba Bobcat Company, Govt Sales, 250 E Beaton Drive, West Fargo, ND 58078.**

*Quote valid for 30 days



Bobcat

Product Quotation

Quotation Number: AMS-04736v4

Date: 2022-05-02 13:33:30

Customer Name/Address:	Bobcat Delivering Dealer	ORDERS TO BE PLACED WITH: Contract Holder/Manufacturer
JACKSON COUNTY PARKS & RECREATION 293129 22807 Sw Woods Chapel Rd Blue Springs, MO 64015-9799	K.C. Bobcat, Blue Springs, MO 1450 SE US 40 Hwy BLUE SPRINGS MO 64014 Phone: (816) 229-4006 Fax: (816) 229-7631	Clark Equipment Company dba Bobcat Company 250 E Beaton Dr West Fargo, ND 58078 Phone: 701-241-8719 Fax: 855-608-0681 Contact: Heather Messmer Heather.Messmer@doosan.com

Description	Part No	Qty	SLP	Discount	Total	
T770 T4 Bobcat Compact Track Loader	M0285	1	\$78,851.00	30%	\$55,195.70	
Factory Installed	P69 Performance Package	M0285-P06-P69	1	\$7,456.00	30%	\$5,219.20
	C37 Comfort Package	M0285-P07-C37	1	\$6,435.00	30%	\$4,504.50
	Selectable Joystick Controls (SJC)	M0285-R01-C04	1	\$945.00	30%	\$661.50
Attachments	80" Severe Duty Bucket	7326129	1	\$2,044.00	24%	\$1,553.44
	SG 60 Stump Grinder	6808034	1	\$10,766.00	24%	\$8,182.16
	68" Angle Broom	7337703	1	\$6,727.00	24%	\$5,112.52

Total of Items Quoted	\$80,429.02
Dealer P.D.I.	\$400.00
Freight Charges	\$1,662.00
Dealer Assembly Charges	\$0.00
Other Charges: Material and Logistics	\$7,894.00
Quote Total - US dollars	\$90,385.02

**Prices per the Missouri NASPO Construction - CC190249002*

**Terms Net 60 Days. Credit cards accepted.*

**FOB Destination*

**State Sales Taxes apply. IF Tax Exempt, please include Tax Exempt Certificate with order.*

**TID# 38-0425350*

****Orders Must Be Placed with Clark Equipment Company dba Bobcat Company, Govt Sales, 250 E Beaton Drive, West Fargo, ND 58078.***

**Quote valid for 30 days*

ORDER ACCEPTED BY:

SIGNATURE

DATE

PRINT NAME AND TITLE

PURCHASE ORDER NUMBER

DELIVERY ADDRESS: _____

BILLING ADDRESS (if different than Ship To): _____

November 1, 2021
BOBCAT SLP Pages



**T450 (Tier 4 V2 Engine) M3-Series
Bobcat Compact Track Loader**



	Discount %	Discounted Price (USD)
--	------------	------------------------

Standard Equipment	Discount %	Discounted Price (USD)
--------------------	------------	------------------------

- | | |
|---|--|
| <ul style="list-style-type: none"> 55 HP Turbo Tier 4 V2 Diesel Engine Auxiliary Hydraulics: Variable Flow Backup Alarm Bob-Tach Mounting System Bobcat Interlock Control System (BICS™) Controls: Bobcat Standard Engine/Hydraulic Systems Shutdown Glow Plugs (Automatically Activated) Horn Instrumentation: Engine Temperature & Fuel Gauges, Hour meter, RPM and Warning Lights Lift Arm Support Lift Path: Radius | <ul style="list-style-type: none"> Lights, Front & Rear Operator Cab <ul style="list-style-type: none"> - Includes: Adjustable Cushion Seat, Top & Rear Windows, Parking Brake, Seat Bar & Seat Belt - Roll Over Protective Structure (ROPS) meets SAE-J1040 & ISO 3471 - Falling Object Protective Structure (FOPS) meets SAE-J1043 & ISO 3449, Level I; (Level II is available through Bobcat Parts) Parking Brake – Spring Applied, Pressure Released (SAPR) Solid Mounted Carriage with 3 Rollers Tracks: Rubber, 11.8" Wide Warranty: 2 years, or 2000 hours whichever occurs first |
|---|--|

Quick Specs	Discount %	Discounted Price (USD)
-------------	------------	------------------------

		T450
Rated Operating Capacity - 35% of Tipping Load.....		1,490 lbs.
Rated Operating Capacity - 50% of Tipping Load.....		2,120 lbs.
Tipping Load.....		4,257 lbs.
Engine Model.....		2.4L V2 Bobcat Engine
Engine Fuel.....		Diesel
Engine Cooling.....		Liquid
Horsepower.....		55
Hydraulic Pump Capacity – Standard Flow.....		16.7 GPM
Travel Speed.....		7.0 MPH
Travel Speed – 2 Speed.....		7.3/11.0 MPH
Operating Weight.....		6,424 lbs.
Shipping Weight.....		5,728 lbs.
Cab Height.....		77.8"
Width (w/out Attachment).....		55.0"
Length (w/out Attachment).....		98.4"
Ground Contact Length.....		50.2"
Reach at Maximum Height.....		23.5"
Height to Hinge Pin.....		109.5"

Part Number	Description	SLP In US \$	Discount %	Discounted Price (USD)
-------------	-------------	--------------	------------	------------------------

M0209	T450 Compact Track Loader (Equipped with Tier 4 V2 Engine).....	\$52,497	30.0%	\$36,747.90
-------	---	----------	-------	-------------

YOU ARE ABLE TO ORDER BASE ONLY, OR SELECT ONE COMFORT AND ONE PERFORMANCE PACKAGE.

Part Number	Description	SLP In US \$	Discount %	Discounted Price (USD)
-------------	-------------	--------------	------------	------------------------

Controls

M_R01-C04	Selectable Joystick Control (SJC)..... Features include: Selectable patterns (ISO or H-Pattern), Auto Idle, Horsepower Management, Speed Management, Drive Response, Drift Compensation and Foot Pedal for Engine Speed Control.	\$795	30.0%	\$556.50
-----------	---	-------	-------	----------

Part Number	Description	SLP In US \$	Discount %	Discounted Price (USD)
-------------	-------------	--------------	------------	------------------------

MUST SELECT ONE COMFORT AND ONE PERFORMANCE PACKAGE OR SELECT INDIVIDUAL OPTIONS

M_P07-C10	C10 Comfort Package.....	\$495	30.0%	\$346.50
-----------	--------------------------	-------	-------	----------

Bobcat Company Price Pages
Compact Track Loaders

Includes: Open Cab, Cab Accessories Package, Standard Panel, Adjustable Suspension Seat

M_-P07-C19	C19 Comfort Package..... Includes: Open Cab, Cab Accessories Package, Deluxe Instrument Panel with Keyless Start, Adjustable Suspension Seat *Can only be ordered with P16 Standard Controls & P26 Standard Controls or SJC	\$1,205	30.0%	\$843.50
M_-P07-C20	C20 Comfort Package..... Includes: Enclosed Cab with AC/Heat, Cab Accessories Package, Standard Panel, Adjustable Suspension Seat *Can only be ordered with P10	\$4,274	30.0%	\$2,991.80
M_-P07-C33	C33 Comfort Package..... Includes: Enclosed Cab with AC/Heat, Sound Reduction, Cab Accessories Package, Deluxe Instrument Panel with Keyless Start, Adjustable Suspension Seat *Can only be ordered with P26	\$5,462	30.0%	\$3,823.40

Cab Accessories Package: Deluxe Headliner with Dome Light, Cab Accessory Harness, Power Port, Lower Interior Panels with Storage Compartments and Cup Holder.

Part Number	Description	SLP In US \$	Discount %	Discounted Price (USD)
Performance Packages				
MUST SELECT ONE COMFORT AND ONE PERFORMANCE PACKAGE OR SELECT INDIVIDUAL OPTIONS				
M_-P06-P10	P10 Performance Package..... Includes: Standard Flow, Single Speed	\$0	30.0%	\$0.00
M_-P06-P16	P16 Performance Package..... Includes: Power Bob-Tach, 7-Pin Attachment Control	\$1,105	30.0%	\$773.50
M_-P06-P26	P26 Performance Package..... Includes: Power Bob-Tach, 2-Speed, 7-Pin Attachment Control	\$3,295	30.0%	\$2,306.50

Part Number	Description	SLP In US \$	Discount %	Discounted Price (USD)
Bobcat Standard Controls Packages				
IF BOBCAT STANDARD CONTROLS IS REQUESTED MUST SELECT ONE OF THESE COMBINED PACKAGES OR BASE MACHINE				
<u>Deluxe Open Cabin</u>		<u>Configuration Price</u>		
M_-P07-C10	C10 Comfort Package..... Includes: Open Cab, Cab Accessories Package, Standard Panel, Adjustable Suspension Seat	\$52,992	30.0%	\$37,094.40
M_-P06-P10	P10 Performance Package..... Includes: Standard Flow, Single Speed	\$495	30.0%	\$346.50
M_-P06-P10	P10 Performance Package..... Includes: Standard Flow, Single Speed	\$0	30.0%	\$0.00
<u>Deluxe Open Cabin w/ Deluxe Monitor - Pwr Bob-Tach - ACD Pkg</u>		<u>Configuration Price</u>		
M_-P07-C19	C19 Comfort Package..... Includes: Open Cab, Cab Accessories Package, Deluxe Instrument Panel with Keyless Start, Adjustable Suspension Seat	\$54,807	30.0%	\$38,364.90
M_-P06-P16	P16 Performance Package..... Includes: Power Bob-Tach, 7-Pin Attachment Control	\$1,205	30.0%	\$843.50
M_-P06-P16	P16 Performance Package..... Includes: Power Bob-Tach, 7-Pin Attachment Control	\$1,105	30.0%	\$773.50
<u>Deluxe Open Cabin w/ Deluxe Monitor -Pwr Bob-Tach - 2-Speed - ACD Pkg</u>		<u>Configuration Price</u>		
M_-P07-C19	C19 Comfort Package..... Includes: Open Cab, Cab Accessories Package, Deluxe Instrument Panel with Keyless Start, Adjustable Suspension Seat	\$56,997	30.0%	\$39,897.90
M_-P07-C19	C19 Comfort Package..... Includes: Open Cab, Cab Accessories Package, Deluxe Instrument Panel with Keyless Start, Adjustable Suspension Seat	\$1,205	30.0%	\$843.50
M_-P06-P26	P26 Performance Package..... Includes: Power Bob-Tach, 2-Speed, 7-Pin Attachment Control	\$3,295	30.0%	\$2,306.50
<u>Deluxe Heat/AC Cabin</u>		<u>Configuration Price</u>		
M_-P07-C20	C20 Comfort Package..... Includes: Enclosed Cab with AC/Heat, Cab Accessories Package, Standard Panel, Adjustable Suspension Seat	\$56,771	30.0%	\$39,739.70
M_-P07-C20	C20 Comfort Package..... Includes: Enclosed Cab with AC/Heat, Cab Accessories Package, Standard Panel, Adjustable Suspension Seat	\$4,274	30.0%	\$2,991.80
M_-P06-P10	P10 Performance Package..... Includes: Standard Flow, Single Speed	\$0	30.0%	\$0.00
<u>Deluxe Heat/AC Cabin w/ Deluxe Monitor -Pwr Bob-Tach - 2-Speed - ACD Pkg</u>		<u>Configuration Price</u>		
M_-P07-C33	C33 Comfort Package..... Includes: Enclosed Cab with AC/Heat, Sound Reduction, Cab Accessories Package, Deluxe Instrument Panel with Keyless Start, Adjustable Suspension Seat	\$61,254	30.0%	\$42,877.80
M_-P07-C33	C33 Comfort Package..... Includes: Enclosed Cab with AC/Heat, Sound Reduction, Cab Accessories Package, Deluxe Instrument Panel with Keyless Start, Adjustable Suspension Seat	\$5,462	30.0%	\$3,823.40
M_-P06-P26	P26 Performance Package..... Includes: Power Bob-Tach, 2-Speed, 7-Pin Attachment Control	\$3,295	30.0%	\$2,306.50

Part Number	Description	SLP In US \$	Discount %	Discounted Price (USD)
Selectable Joystick Controls Packages				
IF BOBCAT SELECTABLE JOYSTICK CONTROLS IS REQUESTED MUST SELECT ONE OF THESE COMBINED PACKAGES				
<u>Deluxe Open Cabin - SJC</u>		<u>Configuration Price</u>		
M_-P07-C10	C10 Comfort Package..... Includes: Open Cab, Cab Accessories Package, Standard Panel, Adjustable Suspension Seat	\$53,787	30.0%	\$37,650.90
M_-P07-C10	C10 Comfort Package..... Includes: Open Cab, Cab Accessories Package, Standard Panel, Adjustable Suspension Seat	\$495	30.0%	\$346.50
M_-P06-P10	P10 Performance Package..... Includes: Standard Flow, Single Speed	\$0	30.0%	\$0.00
M_-R01-C04	Selectable Joystick Control (SJC).....	\$795	30.0%	\$556.50

Bobcat Company Price Pages
Compact Track Loaders

Features include: Selectable patterns (ISO or H-Pattern), Auto Idle, Horsepower Management, Speed Management, Drive Response, Drift Compensation and Foot Pedal for Engine Speed Control.

Deluxe Open Cabin w/ Deluxe Monitor - SJC - Pwr Bob-Tach - 2-Speed - ACD Pkg		Configuration Price			
M_-P07-C19	C19 Comfort Package.....	\$1,205	30.0%		\$843.50
	Includes: Open Cab, Cab Accessories Package, Deluxe Instrument Panel with Keyless Start, Adjustable Suspension Seat				
M_-P06-P26	P26 Performance Package.....	\$3,295	30.0%		\$2,306.50
	Includes: Power Bob-Tach, 2-Speed, 7-Pin Attachment Control				
M_-R01-C04	Selectable Joystick Control (SJC).....	\$795	30.0%		\$556.50
	Features include: Selectable patterns (ISO or H-Pattern), Auto Idle, Horsepower Management, Speed Management, Drive Response, Drift Compensation and Foot Pedal for Engine Speed Control.				
Deluxe Heat/AC Cabin - SJC		Configuration Price			
M_-P07-C20	C20 Comfort Package.....	\$4,274	30.0%		\$2,991.80
	Includes: Enclosed Cab with AC/Heat, Cab Accessories Package, Standard Panel, Adjustable Suspension Seat				
M_-P06-P10	P10 Performance Package.....	\$0	30.0%		\$0.00
	Includes: Standard Flow, Single Speed				
M_-R01-C04	Selectable Joystick Control (SJC).....	\$795	30.0%		\$556.50
Deluxe Heat/AC Cabin w/ Deluxe Monitor - SJC - Pwr Bob-Tach - 2-Speed - ACD Pkg		Configuration Price			
M_-P07-C33	C33 Comfort Package.....	\$5,462	30.0%		\$3,823.40
	Includes: Enclosed Cab with AC/Heat, Sound Reduction, Cab Accessories Package, Deluxe Instrument Panel with Keyless Start, Adjustable Suspension Seat				
M_-P06-P26	P26 Performance Package.....	\$3,295	30.0%		\$2,306.50
	Includes: Power Bob-Tach, 2-Speed, 7-Pin Attachment Control				
M_-R01-C04	Selectable Joystick Control (SJC).....	\$795	30.0%		\$556.50
	Features include: Selectable patterns (ISO or H-Pattern), Auto Idle, Horsepower Management, Speed Management, Drive Response, Drift Compensation and Foot Pedal for Engine Speed Control.				

T62 (Tier 4 V2 Engine) R-Series
Bobcat Compact Track Loader



Standard Equipment

68.0 HP Tier 4 V2 Bobcat Engine	Lift Path: Radius
Auxiliary Hydraulics: Variable Flow	Lights, Front & Rear LED
Backup Alarm	Operator Cab
Bob-Tach Mounting System	- Includes: Adjustable Vinyl Suspension Seat, Top & Rear Windows, Parking Brake, Seat Bar & Seat Belt
Bobcat Interlock Control System (BICS™)	- Roll Over Protective Structure (ROPS) meets SAE-J1040 & ISO 3471
Controls: Bobcat Standard	- Falling Object Protective Structure (FOPS) meets SAE-J1043 & ISO 3449, Level I; (Level II is available through Bobcat Parts)
Cylinder Cushioning - Lift, Tilt	Parking Brake: Spring Applied, Pressure Released (SAPR)
Engine/Hydraulic Performance De-rate Protection	Solid Mounted Carriage with 4 Rollers
Glow Plugs (Automatically Activated)	Tracks: Rubber, 12.6" Wide
Horn	Telematics - Machine IQ
Instrumentation: 5" Display Panel (Rear Camera Ready)	Warranty: 2 years, or 2000 hours whichever occurs first
- Engine Temperature & Fuel Gauges, Hourmeter, RPM, Warning Indicators & other vitals	
Lift Arm Support	

Quick Specs

	T62
Rated Operating Capacity - 35% of Tipping Load.....	2,150 lbs.
- with Torsion Suspension.....	2,050 lbs.
Rated Operating Capacity - 50% of Tipping Load.....	3,072 lbs.
Tipping Load.....	6,143 lbs.
Engine Model.....	2.4L V2
Engine Fuel.....	Diesel
Engine Cooling.....	Liquid
Horsepower.....	68
Hydraulic Pump Capacity-Standard Flow.....	17.6 GPM
Hydraulic Pump Capacity-High Flow (Optional).....	26.9 GPM
Travel Speed.....	7.2 MPH
Travel Speed - Two Speed.....	10.2 MPH
Operating Weight.....	8,612 lbs.
- with Torsion Suspension.....	9,070 lbs.
Shipping Weight.....	8,060 lbs.
Cab Height.....	80.5"
Width (w/out Attachment).....	67.0"

Bobcat Company Price Pages
Compact Track Loaders

- with Torsion Suspension.....	72.4"
Width with Wide Track Option (w/out Attachment).....	70.2"
- with Torsion Suspension.....	73.4"
Length (w/out Attachment).....	107"
Ground Contact Length.....	54.3"
Reach at Maximum Height.....	22.9"
Height to Hinge Pin.....	114.5"

*All travel speeds are preliminary.

Part Number	Description	SLP In US \$	Discount %	Discounted Price (USD)
M0355	T62 Compact Track Loader	\$58,206	30.0%	\$40,744.20

Part Number	Description	SLP In US \$	Discount %	Discounted Price (USD)
-------------	-------------	--------------	------------	------------------------

CAN BE SELECTED WITH PACKAGES OR WITH INDIVIDUAL OPTIONS

Tracks/Undercarriage

M_-R09-C02	15.7" C-Pattern Tracks..... Compatible with Solid Mounted or Torsion Suspension Carriages. Loader width is 70.2".	\$1,597	30.0%	\$1,117.90
M_-R09-C05	12.6" Multi Bar Track..... Compatible with Solid Mounted or Torsion Suspension Carriages. Loader width is 67.0".	\$612	30.0%	\$428.40
M_-R21-C13	5-Link Torsion Suspension Undercarriage..... Compatible with 12.6" Tracks (Loader Width 72.4") or 15.7" Tracks (Loader Width 73.3") *Two-Speed Travel is required and Will be Automatically Added.	\$2,397	30.0%	\$1,677.90

Controls

M_-R01-C04	Selectable Joystick Control (SJC)..... Features include: Selectable patterns (ISO or H-Pattern), Auto Idle, Horsepower Management, Speed Management, Drive Response, Drift Compensation and Foot Pedal for Engine Speed Control.	\$811	30.0%	\$567.63
------------	---	-------	-------	----------

Part Number	Description	SLP In US \$	Discount %	Discounted Price (USD)
-------------	-------------	--------------	------------	------------------------

Bobcat Packages

SELECT AN ORDERING PATH:
1:) SELECT ONE BOBCAT PACKAGE OR
2:) ONE COMFORT AND ONE PERFORMANCE PACKAGE OR
3:) SELECT INDIVIDUAL OPTIONS

M_-P10-C01	Core Package..... Includes: Open Cab, Radio Ready, Deluxe Headliner, Adjustable Vinyl Suspension Seat, Power Bob-Tach, 7-Pin Attachment Control Kit, Two-Speed, Dual Direction Bucket Positioning.	\$5,087	30.0%	\$3,560.90
M_-P10-C02	Core + Package..... Includes: Open Cab, Radio Ready, Deluxe Headliner, Adjustable Vinyl Suspension Seat, Power Bob-Tach, 7-Pin Attachment Control Kit, High Flow, Two-Speed, Dual Direction Bucket Positioning.	\$7,000	30.0%	\$4,900.00
M_-P10-C11	Deluxe Package..... Includes: Enclosed Cab with HVAC, Sound Reduction, Radio Ready, HVAC Headliner, Adjustable Vinyl Suspension Seat, Power Bob-Tach, 7-Pin Attachment Control Kit, Two-Speed, Dual Direction Bucket Positioning.	\$9,518	30.0%	\$6,662.60
M_-P10-C12	Deluxe + Package..... Includes: Enclosed Cab with HVAC, Sound Reduction, Radio Ready, HVAC Headliner, Adjustable Vinyl Suspension Seat, Power Bob-Tach, 7-Pin Attachment Control Kit, High Flow, Two-Speed, Dual Direction Bucket Positioning.	\$11,431	30.0%	\$8,001.70
M_-P10-C21	Premier Package..... Includes: Clear Side Enclosed Cab with HVAC, Sound Reduction, Touch Display with Radio & Bluetooth, Heated Cloth Air Ride Suspension Seat, Premium LED Lights, Rear View Camera, Power Bob-Tach, 7-Pin Attachment Control, High Flow, Two-Speed, Dual Direction Bucket Positioning, Automatic Ride Control, Reversing Fan.	\$17,414	30.0%	\$12,189.80

Part Number	Description	SLP In US \$	Discount %	Discounted Price (USD)
-------------	-------------	--------------	------------	------------------------

MUST SELECT ONE BOBCAT PACKAGE OR ONE COMFORT AND ONE PERFORMANCE PACKAGE OR SELECT INDIVIDUAL OPTIONS

M_-P07-C40	C40 Comfort Package..... Includes: Open Cab, Radio Ready, Deluxe Headliner, and Adjustable Vinyl Suspension Seat.	\$726	30.0%	\$508.51
M_-P07-C52	C52 Comfort Package..... Includes: Enclosed Cab with HVAC, Sound Reduction, Radio Ready, HVAC Headliner, and Adjustable Vinyl Suspension Seat.	\$5,157	30.0%	\$3,609.99
M_-P07-C68	C68 Comfort Package..... Includes: Enclosed Cab with HVAC, Sound Reduction, Touch Display with Radio & Bluetooth, Heated Cloth Air Ride Suspension Seat, Premium LED Lights, and Rear Camera.	\$7,772	30.0%	\$5,440.40
M_-P07-C77	C77 Comfort Package..... Includes: Clear Side Enclosed Cab with HVAC, Sound Reduction, Radio Ready, and Heated Cloth Air Ride Suspension Seat	\$6,847	30.0%	\$4,792.90

Bobcat Company Price Pages
Compact Track Loaders

M_-P07-C88	C88 Comfort Package..... Includes: Clear Side Enclosed Cab with Auto HVAC, Sound Reduction, Touch Display with Radio & Bluetooth, Heated Cloth Air Ride Suspension Seat, Premium LED Lights, and Rear Camera.	\$9,673	30.0%	\$6,771.10
------------	--	---------	-------	------------

Part Number	Description	Performance Packages	SLP In US \$	Discount %	Discounted Price (USD)
-------------	-------------	----------------------	--------------	------------	------------------------

MUST SELECT ONE BOBCAT PACKAGE OR ONE COMFORT AND ONE PERFORMANCE PACKAGE OR SELECT INDIVIDUAL OPTIONS

Standard Flow Packages

M_-P06-P17	P17 Performance Package..... Includes: Power Bob-Tach, 7-Pin Attachment Control, and Dual Direction Bucket Positioning.	\$2,128	30.0%	\$1,489.35
M_-P06-P27	P27 Performance Package..... Includes: Power Bob-Tach, 7-Pin Attachment Control, Two-Speed Travel, and Dual Direction Bucket Positioning.	\$4,361	30.0%	\$3,053.00
M_-P06-P29	P29 Performance Package..... Includes: Power Bob-Tach, 7-Pin Attachment Control, Two-Speed, Dual Direction Bucket Positioning, Automatic Ride Control, and Reversing Fan.	\$5,828	30.0%	\$4,079.60

High Flow Packages

M_-P06-P67	P67 Performance Package..... Includes: Power Bob-Tach, 7-Pin Attachment Control, Two-Speed Travel, High Flow, and Dual Direction Bucket Positioning.	\$6,274	30.0%	\$4,391.59
M_-P06-P69	P69 Performance Package..... Includes: Power Bob-Tach, 7-Pin Attachment Control, High Flow, Two-Speed, Dual Direction Bucket Positioning, Automatic Ride Control, and Reversing Fan.	\$7,741	30.0%	\$5,418.70

Part Number	Description	Individual Factory Options	SLP in US \$	Discount %	Discounted Price (USD)
-------------	-------------	----------------------------	--------------	------------	------------------------

CANNOT BE ADDED TO ANY ORDER WITH BOBCAT PACKAGE OR COMFORT AND PERFORMANCE PACKAGE SELECTION

NOTE: Individual Options SLP includes a 20% premium when compared to ordering the option in a package

NOTE: Several individual options may require additional equipment, see details below. If the option requires additional equipment the Bobcat ordering systems will automatically add the required equipment to the order.

Individual Cab Options

M_-R02-C03	Enclosed Cab with HVAC..... Enclosed Cab with Side Screens, Door, Heat and Air Conditioning.	\$4,626	30.0%	\$3,237.99
M_-R02-C04	Clear Side Enclosed Cab with Auto HVAC..... Clear Side Enclosed Cab with Heavy Duty Polycarbonate Side Windows, Auto Heat, and Air Conditioning. *Touch Display is Required and Will be Automatically Added.	\$6,907	30.0%	\$4,834.90
M_-R02-C05	Clear Side Enclosed Cab with HVAC..... Clear Side Enclosed Cab with Heavy Duty Polycarbonate Side Windows, Heat and Air Conditioning.	\$6,352	30.0%	\$4,446.40
M_-R05-C11	Heated Air Ride Suspension Seat - Cloth Includes: Heat On/Off Switch on the Back of the Seat	\$616	30.0%	\$431.20
M_-R05-C12	Heated Air Ride Suspension Seat - Cloth 3 Point Belt..... Includes: Heat On/Off Switch on the Back of the Seat	\$616	30.0%	\$431.20
M_-R07-C02	Sound Reduction for Manual Controls..... Reduces Operator and By-Stander Noise Levels. Available for Enclosed Cabs with Manual Controls Only.	\$585	30.0%	\$409.84
M_-R07-C03	Sound Reduction for SJC Controls..... Reduces Operator and By-Stander Noise Levels. Available on Enclosed Cabs with SJC Controls Only.	\$585	30.0%	\$409.84
M_-R08-C02	Radio Ready..... Includes: Speakers and Antenna Order Radio Head Unit Kit (Radio & Cradle) 7384580 from Parts.	\$180	30.0%	\$126.00
M_-R08-C03	Touch Display..... 7" Touch Screen Display with Integrated AM/FM Weatherband Radio, Bluetooth, USB Charging, and Hands Free Calling. Includes Speakers and Antenna. Monitors Key Loader Functions, Communicates Alerts and Provides Additional Attachment Information to Track Usage. *Requires Deluxe Headliner on a Non-Enclosed Cab.	\$2,122	30.0%	\$1,485.40
M_-R27-C02	Deluxe Headliner..... Standard Headliner with Dome Light and Location for Hands Free Microphone. *Required for Touch Display on Non-Enclosed Cab.	\$86	30.0%	\$60.12

Bobcat Company Price Pages
Compact Track Loaders

	Enclosed Cabs.			
M_-R52-C03	Rear Camera..... Compatible with Standard Display OR Touch Display.	\$450	30.0%	\$315.00
M_-R55-C02	Premium LED Lights..... Front LED Lights with Extended Corner View Lighting.	\$322	30.0%	\$225.40

Part Number	Description	Individual Factory Options	SLP in US \$	Discount %	Discounted Price (USD)
<u>Individual Performance Options</u>					
M_-R03-C03	High-Flow Hydraulics..... Provides 30.5 GPM and 3500 PSI for Attachment Operation. When Adding High-Flow Hydraulics the 7-Pin Attachment Control will Automatically be Added.		\$2,295	30.0%	\$1,606.50
M_-R04-C02	Two-Speed Travel Includes Two-Speed Travel Motors and 3-Point Seat Belt Low Travel Speed 7.2 MPH, High Travel Speed 10.2 MPH		\$2,681	30.0%	\$1,876.39
M_-R06-C03	Power Bob-Tach..... Connect and Disconnect Non-Hydraulic Attachments from Inside the Cab.		\$1,053	30.0%	\$736.85
M_-R11-C02	Dual Direction Bucket Positioning..... Bucket Positioning Helps the Operator Keep the Same Tilt of the Load During Lifting (Up) and Retracting (Down). Includes On/Off Switch. 7-Pin Attachment Control is included in this option. This Option is Only Available with the Power Bob-Tach Option.		\$1,201	30.0%	\$840.70
M_-R28-C02	7-Pin Attachment Control..... Electrical Connection for Selected Attachments. *Required for High Flow Hydraulics.		\$300	30.0%	\$209.92
M_-R32-C02	Reversing Fan..... Temporarily Reverses the Cooling Fan Direction to Blow Dust and Small Debris from the Radiator and Rear Screens. Includes Three. Operating Modes: Automatic, Momentary, and OFF.		\$799	30.0%	\$559.30
M_-R33-C02	Automatic Ride Control..... Automatically Activates by Detecting Increased Hydraulic Lift Arm Pressure when the Loader is Carrying Material. Includes On/Off Switch.		\$961	30.0%	\$672.70

Part Number	Description	Software Enabled Features/Subscriptions	SLP In US \$	Discount %	Discounted Price (USD)
<u>Standalone Software Updates</u>					
<u>FEATURES ON DEMAND PERFORMANCE PACKAGE NOT REQUIRED</u>					
<i>NOTE: Order and enable via app. available on iOS and Android</i>					
9987603	Automatic Throttle Enable (T66)..... Machine software must be version V88.16 or later. Est. Install Time: 0.25 hr		\$425	0.0%	\$425.00
9987604	Automatic Throttle Enable (T64)..... Machine software must be version V88.16 or later. Est. Install Time: 0.25 hr		\$425	0.0%	\$425.00
9987606	Automatic Throttle Enable (T62)..... Machine software must be version V88.16 or later. Est. Install Time: 0.25 hr		\$425	0.0%	\$425.00

**T64 / T66 (Tier 4 V2 Engine) R-Series
Bobcat Compact Track Loader**



Standard Equipment

68.0 HP Tier 4 V2 Bobcat Engine (T64)
74.0 HP Tier 4 V2 Bobcat Engine (T66)
Auxiliary Hydraulics: Variable Flow
Backup Alarm
Bob-Tach Mounting System
Bobcat Interlock Control System (BICS™)
Controls: Bobcat Standard
Cylinder Cushioning - Lift, Tilt
Engine/Hydraulic Performance De-rate Protection
Glow Plugs (Automatically Activated)

Lift Path: Vertical
Lights, Front & Rear LED
Operator Cab
- Includes: Adjustable Vinyl Suspension Seat, Top & Rear Windows, Parking Brake, Seat Bar & Seat Belt
- Roll Over Protective Structure (ROPS) meets SAE-J1040 & ISO 3471
- Falling Object Protective Structure (FOPS) meets SAE-J1043 & ISO 3449, Level I; (Level II is available through Bobcat Parts)

Bobcat Company Price Pages
Compact Track Loaders

Horn
Instrumentation: 5" Display Panel (Rear Camera Ready)
- Engine Temperature & Fuel Gauges, Hourmeter,
RPM, Warning Indicators & other vitals
Lift Arm Support

Parking Brake: Spring Applied, Pressure Released (SAPR)
Solid Mounted Carriage with 4 Rollers
Tracks: Rubber, 12.6" Wide
Telematics - Machine IQ
Warranty: 2 years, or 2000 hours whichever occurs first

Quick Specs

	T64	T66
Rated Operating Capacity - 35% of Tipping Load.....	2,300 lbs.	2,450 lbs.
- with Torsion Suspension.....	2,200 lbs.	2,350 lbs.
Rated Operating Capacity - 50% of Tipping Load.....	3,286 lbs.	3,500 lbs.
Tipping Load.....	6,571 lbs.	7,000 lbs.
Engine Model.....	2.4L V2	2.4L V2
Engine Fuel.....	Diesel	Diesel
Engine Cooling.....	Liquid	Liquid
Horsepower.....	68	74
Hydraulic Pump Capacity-Standard Flow.....	17.6 GPM	17.6 GPM
Hydraulic Pump Capacity-High Flow (Optional).....	26.9 GPM	26.9 GPM
Travel Speed.....	7.2 MPH	7.2 MPH
Travel Speed - Two Speed.....	10.2 MPH	10.2 MPH
Operating Weight.....	8,727 lbs.	8,927 lbs.
- with Torsion Suspension.....	9,348 lbs.	9,548 lbs.
Shipping Weight.....	8,035 lbs.	8,235 lbs.
Cab Height.....	80.5"	80.5"
Width (w/out Attachment).....	67.0"	67.0"
- with Torsion Suspension.....	72.4	72.4
Width with Wide Track Option (w/out Attachment).....	70.2"	70.2"
- with Torsion Suspension.....	73.4	73.4
Length (w/out Attachment).....	107.0"	107.0"
Ground Contact Length.....	54.3"	54.3"
Reach at Maximum Height.....	36.7"	36.7"
Height to Hinge Pin.....	120.0"	120.0"

Part Number	Compact Track Loader Description	SLP In US \$	Discount %	Discounted Price (USD)
M0363	T64 Compact Track Loader.....	\$62,927	30.0%	\$44,048.90
M0349	T66 Compact Track Loader.....	\$64,232	30.0%	\$44,962.40

Part Number	Machine Configuration Description	SLP In US \$	Discount %	Discounted Price (USD)
-------------	-----------------------------------	--------------	------------	------------------------

CAN BE SELECTED WITH PACKAGES OR WITH INDIVIDUAL OPTIONS

Tracks/Undercarriage

M_-R09-C02	15.7" C-Pattern Tracks..... Compatible with Solid Mounted or Torsion Suspension Carriages. Loader width is 70.2".	\$1,597	30.0%	\$1,117.90
M_-R09-C05	12.6" Multi Bar Track..... Compatible with Solid Mounted or Torsion Suspension Carriages. Loader width is 67.0".	\$612	30.0%	\$428.40
M_-R21-C13	5-Link Torsion Suspension Undercarriage..... Compatible with 12.6" Tracks (Loader Width 72.4") or 15.7" Tracks (Loader Width 73.3") *Two-Speed Travel is required and Will be Automatically Added.	\$2,397	30.0%	\$1,677.90

Controls

M_-R01-C04	Selectable Joystick Control (SJC)..... Features include: Selectable patterns (ISO or H-Pattern), Auto Idle, Horsepower Management, Speed Management, Drive Response, Drift Compensation and Foot Pedal for Engine Speed Control.	\$811	30.0%	\$567.63
------------	---	-------	-------	----------

Part Number	Bobcat Packages Description	SLP In US \$	Discount %	Discounted Price (USD)
-------------	-----------------------------	--------------	------------	------------------------

SELECT AN ORDERING PATH:
1:) SELECT ONE BOBCAT PACKAGE OR
2:) ONE COMFORT AND ONE PERFORMANCE PACKAGE OR
3:) SELECT INDIVIDUAL OPTIONS

M_-P10-C01	Core Package..... Includes: Open Cab, Radio Ready, Deluxe Headliner, Adjustable Vinyl Suspension Seat, Power Bob-Tach, 7-Pin Attachment Control Kit, Two-Speed, Dual Direction Bucket Positioning.	\$5,087	30.0%	\$3,560.90
M_-P10-C02	Core + Package..... Includes: Open Cab, Radio Ready, Deluxe Headliner, Adjustable Vinyl Suspension Seat, Power Bob-Tach, 7-Pin Attachment Control Kit, High Flow, Two-Speed, Dual Direction Bucket Positioning.	\$7,000	30.0%	\$4,900.00
M_-P10-C11	Deluxe Package..... Includes: Enclosed Cab with HVAC, Sound Reduction, Radio Ready, HVAC Headliner, Adjustable Vinyl Suspension Seat, Power Bob-Tach, 7-Pin Attachment Control Kit, Two-Speed, Dual Direction Bucket Positioning.	\$9,518	30.0%	\$6,662.60
M_-P10-C12	Deluxe + Package..... Includes: Enclosed Cab with HVAC, Sound Reduction, Radio Ready, HVAC Headliner, Adjustable Vinyl Suspension Seat,	\$11,431	30.0%	\$8,001.70

Bobcat Company Price Pages
Compact Track Loaders

Power Bob-Tach, 7-Pin Attachment Control Kit, High Flow, Two-Speed, Dual Direction Bucket Positioning.

M_-P10-C21	Premier Package.....	\$17,414	30.0%	\$12,189.80
	Includes: Clear Side Enclosed Cab with HVAC, Sound Reduction, Touch Display with Radio & Bluetooth, Heated Cloth Air Ride Suspension Seat, Premium LED Lights, Rear View Camera, Power Bob-Tach, 7-Pin Attachment Control, High Flow, Two-Speed, Dual Direction Bucket Positioning, Automatic Ride Control, Reversing Fan.			

Part Number	Description	SLP In US \$	Discount %	Discounted Price (USD)
Comfort Packages				
MUST SELECT ONE BOBCAT PACKAGE OR ONE COMFORT AND ONE PERFORMANCE PACKAGE OR SELECT INDIVIDUAL OPTIONS				
M_-P07-C40	C40 Comfort Package..... Includes: Open Cab, Radio Ready, Deluxe Headliner, and Adjustable Vinyl Suspension Seat.	\$726	30.0%	\$508.51
M_-P07-C52	C52 Comfort Package..... Includes: Enclosed Cab with HVAC, Sound Reduction, Radio Ready, HVAC Headliner, and Adjustable Vinyl Suspension Seat.	\$5,157	30.0%	\$3,609.99
M_-P07-C68	C68 Comfort Package..... Includes: Enclosed Cab with HVAC, Sound Reduction, Touch Display with Radio & Bluetooth, Heated Cloth Air Ride Suspension Seat, Premium LED Lights, and Rear Camera.	\$7,772	30.0%	\$5,440.40
M_-P07-C77	C77 Comfort Package..... Includes: Clear Side Enclosed Cab with HVAC, Sound Reduction, Radio Ready, and Heated Cloth Air Ride Suspension Seat.	\$6,847	30.0%	\$4,792.90
M_-P07-C88	C88 Comfort Package..... Includes: Clear Side Enclosed Cab with Auto HVAC, Sound Reduction, Touch Display with Radio & Bluetooth, Heated Cloth Air Ride Suspension Seat, Premium LED Lights, and Rear Camera.	\$9,673	30.0%	\$6,771.10

Part Number	Description	SLP In US \$	Discount %	Discounted Price (USD)
Performance Packages				
MUST SELECT ONE BOBCAT PACKAGE OR ONE COMFORT AND ONE PERFORMANCE PACKAGE OR SELECT INDIVIDUAL OPTIONS				
<u>Standard Flow Packages</u>				
M_-P06-P17	P17 Performance Package..... Includes: Power Bob-Tach, 7-Pin Attachment Control, and Dual Direction Bucket Positioning.	\$2,128	30.0%	\$1,489.35
M_-P06-P27	P27 Performance Package..... Includes: Power Bob-Tach, 7-Pin Attachment Control, Two-Speed Travel, and Dual Direction Bucket Positioning.	\$4,361	30.0%	\$3,053.00
M_-P06-P29	P29 Performance Package..... Includes: Power Bob-Tach, 7-Pin Attachment Control, Two-Speed, Dual Direction Bucket Positioning, Automatic Ride Control, and Reversing Fan.	\$5,828	30.0%	\$4,079.60
<u>High Flow Packages</u>				
M_-P06-P67	P67 Performance Package..... Includes: Power Bob-Tach, 7-Pin Attachment Control, Two-Speed Travel, High Flow, and Dual Direction Bucket Positioning.	\$6,274	30.0%	\$4,391.59
M_-P06-P69	P69 Performance Package..... Includes: Power Bob-Tach, 7-Pin Attachment Control, High Flow, Two-Speed, Dual Direction Bucket Positioning, Automatic Ride Control, and Reversing Fan.	\$7,741	30.0%	\$5,418.70

Part Number	Description	SLP in US \$	Discount %	Discounted Price (USD)
Individual Factory Options				

CANNOT BE ADDED TO ANY ORDER WITH BOBCAT PACKAGE OR COMFORT AND PERFORMANCE PACKAGE SELECTION

NOTE: Individual Options SLP includes a 20% premium when compared to ordering the option in a package

NOTE: Several individual options may require additional equipment, see details below. If the option requires additional equipment the Bobcat ordering systems will automatically add the required equipment to the order.

Individual Cab Options

M_-R02-C03	Enclosed Cab with HVAC.....	\$4,626	30.0%	\$3,237.99
------------	-----------------------------	---------	-------	------------

Bobcat Company Price Pages
Compact Track Loaders

M_-R02-C04	Enclosed Cab with Side Screens, Door, Heat and Air Conditioning. Clear Side Enclosed Cab with Auto HVAC.....	\$6,907	30.0%	\$4,834.90
M_-R02-C05	Clear Side Enclosed Cab with Heavy Duty Polycarbonate Side Windows, Auto Heat, and Air Conditioning. *Touch Display is Required and Will be Automatically Added. Clear Side Enclosed Cab with HVAC.....	\$6,352	30.0%	\$4,446.40
M_-R05-C11	Heated Air Ride Suspension Seat - Cloth	\$616	30.0%	\$431.20
M_-R05-C12	Includes: Heat On/Off Switch on the Back of the Seat Heated Air Ride Suspension Seat - Cloth 3 Point Belt.....	\$616	30.0%	\$431.20
M_-R07-C02	Includes: Heat On/Off Switch on the Back of the Seat Sound Reduction for Manual Controls.....	\$585	30.0%	\$409.84
M_-R07-C03	Reduces Operator and By-Stander Noise Levels. Available for Enclosed Cabs with Manual Controls Only. Sound Reduction for SJC Controls.....	\$585	30.0%	\$409.84
M_-R08-C02	Reduces Operator and By-Stander Noise Levels. Available on Enclosed Cabs with SJC Controls Only. Radio Ready.....	\$180	30.0%	\$126.00
M_-R08-C03	Includes: Speakers and Antenna Order Radio Head Unit Kit (Radio & Cradle) 7384580 from Parts. Touch Display.....	\$2,122	30.0%	\$1,485.40
M_-R27-C02	7" Touch Screen Display with Integrated AM/FM Weatherband Radio, Bluetooth, USB Charging, and Hands Free Calling. Includes Speakers and Antenna. Monitors Key Loader Functions, Communicates Alerts and Provides Additional Attachment Information to Track Usage. *Requires Deluxe Headliner on a Non-Enclosed Cab. Deluxe Headliner.....	\$86	30.0%	\$60.12
M_-R52-C03	Standard Headliner with Dome Light and Location for Hands Free Microphone. *Required for Touch Display on Non-Enclosed Cabs. Rear Camera.....	\$450	30.0%	\$315.00
M_-R55-C02	Compatible with Standard Display OR Touch Display. Premium LED Lights.....	\$322	30.0%	\$225.40
	Front LED Lights with Extended Corner View Lighting.			

Part Number	Description	Individual Factory Options	SLP in US \$	Discount %	Discounted Price (USD)
<u>Individual Performance Options</u>					
M_-R03-C03	High-Flow Hydraulics.....	Provides 30.5 GPM and 3500 PSI for Attachment Operation. When Adding High-Flow Hydraulics the 7-Pin Attachment Control will Automatically be Added.	\$2,295	30.0%	\$1,606.50
M_-R04-C02	Two-Speed Travel	Includes Two-Speed Travel Motors and 3-Point Seat Belt Low Travel Speed 7.2 MPH, High Travel Speed 10.2 MPH	\$2,681	30.0%	\$1,876.39
M_-R06-C03	Power Bob-Tach.....	Connect and Disconnect Non-Hydraulic Attachments from Inside the Cab.	\$1,053	30.0%	\$736.85
M_-R11-C02	Dual Direction Bucket Positioning.....	Bucket Positioning Helps the Operator Keep the Same Tilt of the Load During Lifting (Up) and Retracting (Down). Includes On/Off Switch. 7-Pin Attachment Control is included in this option. This Option is Only Available with the Power Bob-Tach Option.	\$1,201	30.0%	\$840.70
M_-R28-C02	7-Pin Attachment Control.....	Electrical Connection for Selected Attachments. *Required for High Flow Hydraulics.	\$300	30.0%	\$209.92
M_-R32-C02	Reversing Fan.....	Temporarily Reverses the Cooling Fan Direction to Blow Dust and Small Debris from the Radiator and Rear Screens. Includes Three. Operating Modes: Automatic, Momentary, and OFF.	\$799	30.0%	\$559.30
M_-R33-C02	Automatic Ride Control.....	Automatically Activates by Detecting Increased Hydraulic Lift Arm Pressure when the Loader is Carrying Material. Includes On/Off Switch.	\$961	30.0%	\$672.70

Part Number	Description	Software Enabled Features/Subscriptions	SLP In US \$	Discount %	Discounted Price (USD)
-------------	-------------	---	--------------	------------	------------------------

Standalone Software Updates

FEATURES ON DEMAND PERFORMANCE PACKAGE NOT REQUIRED

NOTE: Order and enable via app, available on iOS and Android

9987603	Automatic Throttle Enable (T66).....	Machine software must be version V88.16 or later. Est. Install Time: 0.25 hr	\$425	0.0%	\$425.00
9987604	Automatic Throttle Enable (T64).....		\$425	0.0%	\$425.00

Machine software must be version V88.16 or later. Est. Install Time: 0.25 hr
 9987606 Automatic Throttle Enable (T62)..... \$425 0.0% \$425.00
 Machine software must be version V88.16 or later. Est. Install Time: 0.25 hr

**T76 (Tier 4 V2 Engine) R-Series
Bobcat Compact Track Loader**



Standard Equipment

- | | |
|---|--|
| 74.0 HP Tier 4 V2 Bobcat Engine
Auxiliary Hydraulics: Variable Flow
Backup Alarm
Bob-Tach Mounting System
Bobcat Interlock Control System (BICS™)
Controls: Selectable Joystic Controls
Cylinder Cushioning - Lift, Tilt
Engine/Hydraulic Performance De-rate Protection
Glow Plugs (Automatically Activated)
Horn
Instrumentation: Keyless Start with
- 5" Display Panel (Rear Camera Ready) with
Engine Temperature & Fuel Gauges, Hourmeter,
RPM, Warning Indicators & other vitals
Lift Arm Support | Lift Path: Vertical
Lights, Front & Rear LED
Operator Cab
- Includes: Adjustable Vinyl Suspension Seat, Top & Rear
Windows, Parking Brake, Seat Bar & Seat Belt
- Roll Over Protective Structure (ROPS) meets
SAE-J1040 & ISO 3471
- Falling Object Protective Structure (FOPS)
meets SAE-J1043 & ISO 3449, Level I;
(Level II is available through Bobcat Parts)
Parking Brake: Spring Applied, Pressure Released (SAPR)
Solid Mounted Carriage with 4 Rollers
Tracks: Rubber, 12.6" Wide
Telematics - Machine IQ
Warranty: 2 years, or 2000 hours whichever occurs first |
|---|--|

Quick Specs

	T76
Rated Operating Capacity - 35% of Tipping Load.....	2,900 lbs.
- with Torsion Suspension.....	2,800 lbs
Rated Operating Capacity - 50% of Tipping Load.....	4,143 lbs.
Tipping Load.....	8,285 lbs.
Engine Model.....	2.4L V2
Engine Fuel.....	Diesel
Engine Cooling.....	Liquid
Horsepower.....	74
Hydraulic Pump Capacity-Standard Flow.....	23.3 GPM
Hydraulic Pump Capacity-High Flow (Optional).....	30.3 GPM
Travel Speed.....	6.8 MPH
Travel Speed - Two Speed.....	9.2 MPH
Operating Weight.....	10,250 lbs.
- with Torsion Suspension.....	10,620 lbs.
Shipping Weight.....	9,460 lbs.
Cab Height.....	81.8"
Width (w/out Attachment).....	72.9"
- with Torsion Suspension.....	74.3"
Width with Wide Track Option (w/out Attachment).....	78.0"
- with Torsion Suspension.....	78.0"
Length (w/out Attachment).....	113.9"
Ground Contact Length.....	59.3"
Reach at Maximum Height.....	37.4"
Height to Hinge Pin.....	128.3"

Part Number	Description	Compact Track Loader	SLP In US \$	Discount %	Discounted Price (USD)
M0371	T76 Compact Track Loader		\$73,388	30.0%	\$51,371.60

Part Number	Description	Machine Configuration	SLP In US \$	Discount %	Discounted Price (USD)
-------------	-------------	-----------------------	--------------	------------	------------------------

CAN BE SELECTED WITH PACKAGES **QR** WITH INDIVIDUAL OPTIONS

Tracks/Undercarriage

M_-R09-C02	17.7" C-Pattern Tracks..... Compatible with Solid Mounted or Torsion Suspension Carriages. Loader width is 78".	\$1,661	30.0%	\$1,162.70
M_-R09-C05	17.7" Multi Bar Track..... Compatible with Solid Mounted or Torsion Suspension Carriages. Loader width is 78".	\$714	30.0%	\$499.80
M_-R21-C13	5-Link Torsion Suspension Undercarriage..... Compatible with 12.6" Tracks (Loader Width 72.4") or 17.7" Tracks (Loader Width 73.3") *Two-Speed Travel is Required and Will be Automatically Added.	\$2,482	30.0%	\$1,737.40

Bobcat Company Price Pages
Compact Track Loaders

Part Number	Description	Bobcat Packages	SLP In US \$	Discount %	Discounted Price (USD)
SELECT AN ORDERING PATH: 1) SELECT ONE BOBCAT PACKAGE OR 2) ONE COMFORT AND ONE PERFORMANCE PACKAGE OR 3) SELECT INDIVIDUAL OPTIONS					
M_-P10-C01	Core Package.....		\$5,087	30.0%	\$3,560.90
	Includes: Open Cab, Radio Ready, Deluxe Headliner, Adjustable Vinyl Suspension Seat, Power Bob-Tach, 7-Pin Attachment Control Kit, Two-Speed, Dual Direction Bucket Positioning.				
M_-P10-C02	Core + Package.....		\$7,378	30.0%	\$5,164.60
	Includes: Open Cab, Radio Ready, Deluxe Headliner, Adjustable Vinyl Suspension Seat, Power Bob-Tach, 7-Pin Attachment Control Kit, High Flow, Two-Speed, Dual Direction Bucket Positioning.				
M_-P10-C11	Deluxe Package.....		\$9,518	30.0%	\$6,662.60
	Includes: Enclosed Cab with HVAC, Sound Reduction, Radio Ready, HVAC Headliner, Adjustable Vinyl Suspension Seat, Power Bob-Tach, 7-Pin Attachment Control Kit, Two-Speed, Dual Direction Bucket Positioning.				
M_-P10-C12	Deluxe + Package.....		\$11,809	30.0%	\$8,266.30
	Includes: Enclosed Cab with HVAC, Sound Reduction, Radio Ready, HVAC Headliner, Adjustable Vinyl Suspension Seat, Power Bob-Tach, 7-Pin Attachment Control Kit, High Flow, Two-Speed, Dual Direction Bucket Positioning.				
M_-P10-C21	Premier Package.....		\$17,792	30.0%	\$12,454.40
	Includes: Clear Side Enclosed Cab with HVAC, Sound Reduction, Touch Display with Radio & Bluetooth, Heated Cloth Air Ride Suspension Seat, Premium LED Lights, Rear View Camera, Power Bob-Tach, 7-Pin Attachment Control, High Flow, Two-Speed, Dual Direction Bucket Positioning, Automatic Ride Control, Reversing Fan.				

Part Number	Description	Comfort Packages	SLP In US \$	Discount %	Discounted Price (USD)
MUST SELECT ONE BOBCAT PACKAGE OR ONE COMFORT AND ONE PERFORMANCE PACKAGE OR SELECT INDIVIDUAL OPTIONS					
M_-P07-C40	C40 Comfort Package.....		\$726	30.0%	\$508.51
	Includes: Open Cab, Radio Ready, Deluxe Headliner, and Adjustable Vinyl Suspension Seat.				
M_-P07-C52	C52 Comfort Package.....		\$5,157	30.0%	\$3,609.99
	Includes: Enclosed Cab with HVAC, Sound Reduction, Radio Ready, HVAC Headliner, and Adjustable Vinyl Suspension Seat.				
M_-P07-C68	C68 Comfort Package.....		\$7,772	30.0%	\$5,440.40
	Includes: Enclosed Cab with HVAC, Sound Reduction, Touch Display with Radio & Bluetooth, Heated Cloth Air Ride Suspension Seat, Premium LED Lights, and Rear Camera.				
M_-P07-C77	C77 Comfort Package.....		\$6,847	30.0%	\$4,792.90
	Includes: Clear Side Enclosed Cab with HVAC, Sound Reduction, Radio Ready, and Heated Cloth Air Ride Suspension Seat.				
M_-P07-C88	C88 Comfort Package.....		\$9,673	30.0%	\$6,771.10
	Includes: Clear Side Enclosed Cab with Auto HVAC, Sound Reduction, Touch Display with Radio & Bluetooth, Heated Cloth Air Ride Suspension Seat, Premium LED Lights, and Rear Camera.				

Part Number	Description	Performance Packages	SLP In US \$	Discount %	Discounted Price (USD)
MUST SELECT ONE BOBCAT PACKAGE OR ONE COMFORT AND ONE PERFORMANCE PACKAGE OR SELECT INDIVIDUAL OPTIONS					
<u>Standard Flow Packages</u>					
M_-P06-P17	P17 Performance Package.....		\$2,128	30.0%	\$1,489.35
	Includes: Power Bob-Tach, 7-Pin Attachment Control, and Dual Direction Bucket Positioning.				
M_-P06-P27	P27 Performance Package.....		\$4,361	30.0%	\$3,053.00
	Includes: Power Bob-Tach, 7-Pin Attachment Control, Two-Speed Travel, and Dual Direction Bucket Positioning.				
M_-P06-P29	P29 Performance Package.....		\$5,828	30.0%	\$4,079.60
	Includes: Power Bob-Tach, 7-Pin Attachment Control, Two-Speed, Dual Direction Bucket Positioning, Automatic Ride Control, and Reversing Fan.				
<u>High Flow Packages</u>					
M_-P06-P67	P67 Performance Package.....		\$6,652	30.0%	\$4,656.40
	Includes: Power Bob-Tach, 7-Pin Attachment Control, Two-Speed Travel, High Flow, and Dual Direction Bucket Positioning.				
M_-P06-P69	P69 Performance Package.....		\$8,119	30.0%	\$5,683.30
	Includes: Power Bob-Tach, 7-Pin Attachment Control, High Flow, Two-Speed, Dual Direction Bucket Positioning, Automatic Ride Control, and Reversing Fan.				
M_-P06-P95	Features On Demand.....		\$4,637	30.0%	\$3,245.90

Bobcat Company Price Pages
Compact Track Loaders

Includes: Power Bob-Tach, 7-Pin Attachment Control as Standard. Features that can be Enabled: Two-Speed, Dual Direction Bucket Positioning, Automatic Ride Control, Reversing Fan, and High Flow.

Part Number	Description	Individual Factory Options	SLP in US \$	Discount %	Discounted Price (USD)
-------------	-------------	----------------------------	--------------	------------	------------------------

CANNOT BE ADDED TO ANY ORDER WITH BOBCAT PACKAGE OR COMFORT AND PERFORMANCE PACKAGE SELECTION

NOTE: Individual Options SLP includes a 20% premium when compared to ordering the option in a package

NOTE: Several individual options may require additional equipment, see details below. If the option requires additional equipment the Bobcat ordering systems will automatically add the required equipment to the order.

Individual Cab Options

M_-R02-C03	Enclosed Cab with HVAC..... Enclosed Cab with Side Screens, Door, Heat and Air Conditioning.		\$4,626	30.0%	\$3,237.99
M_-R02-C04	Clear Side Enclosed Cab with Auto HVAC..... Clear Side Enclosed Cab with Heavy Duty Polycarbonate Side Windows, Auto Heat, and Air Conditioning. *Touch Display is Required and Will be Automatically Added.		\$6,907	30.0%	\$4,834.90
M_-R02-C05	Clear Side Enclosed Cab with HVAC..... Clear Side Enclosed Cab with Heavy Duty Polycarbonate Side Windows, Heat and Air Conditioning.		\$6,352	30.0%	\$4,446.40
M_-R05-C11	Heated Air Ride Suspension Seat - Cloth Includes: Heat On/Off Switch on the Back of the Seat		\$616	30.0%	\$431.20
M_-R05-C12	Heated Air Ride Suspension Seat - Cloth 3 Point Belt..... Includes: Heat On/Off Switch on the Back of the Seat		\$616	30.0%	\$431.20
M_-R07-C03	Sound Reduction for SJC Controls..... Reduces Operator and By-Stander Noise Levels. Available on Enclosed Cabs with SJC Controls Only.		\$585	30.0%	\$409.84
M_-R08-C02	Radio Ready..... Includes: Speakers and Antenna Order Radio Head Unit Kit (Radio & Cradle) 7384580 from Parts.		\$180	30.0%	\$126.00
M_-R08-C03	Touch Display..... 7" Touch Screen Display with Integrated AM/FM Weatherband Radio, Bluetooth, USB Charging, and Hands Free Calling. Includes Speakers and Antenna. Monitors Key Loader Functions, Communicates Alerts and Provides Additional Attachment Information to Track Usage. *Requires Deluxe Headliner on a Non-Enclosed Cab.		\$2,122	30.0%	\$1,485.40
M_-R27-C02	Deluxe Headliner..... Standard Headliner with Dome Light and Location for Hands Free Microphone. *Required for Touch Display on Non-Enclosed Cabs.		\$86	30.0%	\$60.12
M_-R52-C03	Rear Camera..... Compatible with Standard Display OR Touch Display.		\$450	30.0%	\$315.00
M_-R55-C02	Premium LED Lights..... Front LED Lights with Extended Corner View Lighting.		\$322	30.0%	\$225.40

Part Number	Description	Individual Factory Options	SLP in US \$	Discount %	Discounted Price (USD)
-------------	-------------	----------------------------	--------------	------------	------------------------

Individual Performance Options

M_-R03-C03	High-Flow Hydraulics..... Provides 30.5 GPM and 3500 PSI for Attachment Operation. When Adding High-Flow Hydraulics the 7-Pin Attachment Control will Automatically be Added.		\$2,749	30.0%	\$1,924.30
M_-R04-C02	Two-Speed Travel Includes Two-Speed Travel Motors and 3-Point Seat Belt		\$2,681	30.0%	\$1,876.39

Bobcat Company Price Pages
Compact Track Loaders

	Low Travel Speed 7.2 MPH, High Travel Speed 10.2 MPH			
M_-R06-C03	Power Bob-Tach..... Connect and Disconnect Non-Hydraulic Attachments from Inside the Cab.	\$1,053	30.0%	\$736.85
M_-R11-C02	Dual Direction Bucket Positioning..... Bucket Positioning Helps the Operator Keep the Same Tilt of the Load During Lifting (Up) and Retracting (Down). Includes On/Off Switch. 7-Pin Attachment Control is included in this option. This Option is Only Available with the Power Bob-Tach Option.	\$1,001	30.0%	\$700.70
M_-R28-C02	7-Pin Attachment Control..... Electrical Connection for Selected Attachments. *Required for High Flow Hydraulics.	\$300	30.0%	\$209.92
M_-R32-C02	Reversing Fan..... Temporarily Reverses the Cooling Fan Direction to Blow Dust and Small Debris from the Radiator and Rear Screens. Includes Three. Operating Modes: Automatic, Momentary, and OFF.	\$799	30.0%	\$559.30
M_-R33-C02	Automatic Ride Control..... Automatically Activates by Detecting Increased Hydraulic Lift Arm Pressure when the Loader is Carrying Material. Includes On/Off Switch.	\$961	30.0%	\$672.70

Part Number	Description	Software Enabled Features/Subscriptions	SLP In US \$	Discount %	Discounted Price (USD)
-------------	-------------	---	--------------	------------	------------------------

Features On Demand

MUST HAVE FEATURES ON DEMAND PERFORMANCE PACKAGE

*NOTE: 1-5 Options. No Time Increase With Additional Options in Same Transaction
Order and enable via app, available on iOS and Android*

9986490	Automatic Ride Control Enable..... Est. Install Time: 0.25 hr	\$416	0.0%	\$416.00
9986489	Dual Direction Bucket Positioning Enable..... Est. Install Time: 0.25 hr	\$459	0.0%	\$459.00
9986487	High Flow Hydraulics Enable..... Est. Install Time: 0.25 hr	\$1,261	0.0%	\$1,261.00
9986491	Reversing Fan Enable..... Est. Install Time: 0.25 hr	\$346	0.0%	\$346.00
9986488	Two Speed Travel Enable..... Est. Install Time: 0.25 hr	\$1,229	0.0%	\$1,229.00

Standalone Software Updates

FEATURES ON DEMAND PERFORMANCE PACKAGE NOT REQUIRED

NOTE: Order and enable via app, available on iOS and Android

9987598	Automatic Throttle Enable (T76)..... Machine software must be version V88.16 or later. Est. Install Time: 0.25 hr	\$425	0.0%	\$425.00
---------	--	-------	------	----------

**T740 (Tier 4) M2-Series
Bobcat Compact Track Loader**



Standard Equipment

74 HP Turbo Tier 4 Diesel Engine	Lights, Front & Rear
Air Intake Heater (Automatically Activated)	Operator Cab
Auxiliary Hydraulics: Variable Flow	- Includes: Adjustable Suspension Seat, Top & Rear
Backup Alarm	Windows, Parking Brake, Seat Bar & Seat Belt
Bob-Tach Mounting System	- Roll Over Protective Structure (ROPS) meets
Bobcat Interlock Control System (BICS™)	SAE-J1040 & ISO 3471
Controls: Bobcat Standard Controls with Power Assist	- Falling Object Protective Structure (FOPS) meets
Cylinder Cushioning – Lift, Tilt	SAE-J1043 & ISO 3449, Level I; (Level
Engine/Hydraulic Systems Shutdown	II is available through Bobcat Parts)
Horn	Parking Brake – Spring Applied, Pressure Released (SAPR)
Instrumentation: Engine Temperature & Fuel Gauges,	Solid Mounted Carriage with 5 Rollers
Hour meter, RPM and Warning Lights	Tracks: Rubber, 17.7" Wide
Lift Arm Support	Warranty: 2 years, or 2000 hours whichever occurs first
Lift Path: Vertical	

Quick Specs

	T740
Rated Operating Capacity - 35% of Tipping Load.....	3,200 lbs.
with Roller Suspension Carriage.....	3,100 lbs.
Rated Operating Capacity - 50% of Tipping Load.....	4,571 lbs.
Tipping Load.....	9,143 lbs.
Engine Model.....	3.4L Bobcat Engine
Engine Fuel.....	Diesel

Bobcat Company Price Pages
Compact Track Loaders

Engine Cooling.....	Liquid
Horsepower.....	74
Hydraulic Pump Capacity – Standard Flow.....	23.0 GPM
Hydraulic Pump Capacity – High Flow (Optional).....	30.5 GPM
Travel Speed.....	6.0 MPH
Travel Speed – 2 Speed.....	5.5/8.3 MPH
Operating Weight.....	10,127 lbs.
with Roller Suspension Carriage.....	10,281 lbs.
Shipping Weight.....	9,211 lbs.
Cab Height.....	81.3"
Width (w/out Attachment).....	78.0"
Length (w/out Attachment).....	114.3"
Ground Contact Length.....	63.7"
Reach at Maximum Height.....	34.2"
Height to Hinge Pin.....	131.4"

Part Number	Description	SLP In US \$	Discount %	Discounted Price (USD)
M0277	T740 Compact Track Loader (Equipped with Tier 4 Engine).....	\$74,652	30.0%	\$52,256.40

Part Number	Description	SLP In US \$	Discount %	Discounted Price (USD)
Machine Configuration				
CAN BE SELECTED WITH PACKAGES OR WITH INDIVIDUAL OPTIONS				

Part Number	Description	SLP In US \$	Discount %	Discounted Price (USD)
<u>Tracks/Undercarriage</u>				
M_-R09-C05	17.7" Multi Bar Track..... Compatible with Solid Mounted or Roller Suspension Carriages. Loader width is 78.0"	\$850	30.0%	\$595.00
M_-R21-C13	Roller Suspension Carriage..... Includes Solid Mounted Undercarriage and 4 Rollers with Leaf Spring style suspension. Compatible with 12.6" tracks (Loader width 73.4") or 17.7" tracks (Loader width is 78.0").Roller suspension carriage is not available with single speed or Performance Package P13	\$1,785	30.0%	\$1,249.50
<u>Controls</u>				
M_-R01-C04	Selectable Joystick Control (SJC)..... Features include: Selectable patterns (ISO or H-Pattern), Auto Idle, Horsepower Management, Speed Management, Drive Response, Drift Compensation and Foot Pedal for Engine Speed Control. *The Cab Accessories Package is required via Individual Factory Option if option ordered without package.	\$945	30.0%	\$661.50

Part Number	Description	SLP In US \$	Discount %	Discounted Price (USD)
Bobcat Packages				
SELECT A ORDERING PATH: 1:) SELECT ONE BOBCAT PACKAGE OR 2:) ONE COMFORT AND ONE PERFORMANCE PACKAGE OR 3:) SELECT INDIVIDUAL OPTIONS				
M_-P10-C01	Core Package..... Includes: Open Cab, Cab Accessories Package, Standard Panel, Adjustable Suspension Seat, Power Bob-Tach, 7-Pin Attachment Control, 2-Speed, Hydraulic Bucket Positioning	\$4,348	30.0%	\$3,043.60
M_-P10-C02	Core + Package..... Includes: Open Cab, Cab Accessories Package, Standard Panel, Adjustable Suspension Seat, Power Bob-Tach, 7-Pin Attachment Control, High Flow, 2-Speed, Hydraulic Bucket Positioning	\$6,594	30.0%	\$4,615.80
M_-P10-C11	Deluxe Package..... Includes: Enclosed Cab with AC/Heat, Sound Reduction, Cab Accessories Package, Standard Panel, Adjustable Suspension Seat, Power Bob-Tach, 7-Pin Attachment Control, 2-Speed, Hydraulic Bucket Positioning	\$8,605	30.0%	\$6,023.50
M_-P10-C12	Deluxe + Package..... Includes: Enclosed Cab with AC/Heat, Sound Reduction, Cab Accessories Package, Standard Panel, Adjustable Suspension Seat, Power Bob-Tach, 7-Pin Attachment Control, High Flow, 2-Speed, Hydraulic Bucket Positioning	\$10,851	30.0%	\$7,595.70
M_-P10-C21	Premier Package..... Includes: Enclosed Cab with AC/Heat, Sound Reduction, Cab Accessories Package, Deluxe Instrument Panel with Keyless Start, Radio, Heated Cloth Air Ride Suspension Seat, Power Bob-Tach, 7-Pin Attachment Control, High Flow, 2-Speed, Hydraulic Bucket Positioning, Automatic Ride Control, Reversing Fan	\$13,891	30.0%	\$9,723.70

Part Number	Description	SLP In US \$	Discount %	Discounted Price (USD)
Comfort Cab Packages				
MUST SELECT ONE BOBCAT PACKAGES OR ONE COMFORT AND ONE PERFORMANCE PACKAGE OR SELECT INDIVIDUAL OPTIONS				
M_-P07-C10	C10 Comfort Package..... Includes: Open Cab, Cab Accessories Package, Standard Panel, Adjustable Suspension Seat	\$495	30.0%	\$346.50
M_-P07-C23	C23 Comfort Package..... Includes: Enclosed Cab with AC/Heat, Sound Reduction, Cab Accessories Package, Standard Panel, Adjustable Suspension Seat	\$4,752	30.0%	\$3,326.40

Bobcat Company Price Pages
Compact Track Loaders

M_-P07-C27	C27 Comfort Package..... Includes: Enclosed Cab with AC/Heat, Sound Reduction, Cab Accessories Package, Standard Panel, Radio, Heated Cloth Air Ride Suspension Seat	\$5,725	30.0%	\$4,007.50
M_-P07-C37	C37 Comfort Package..... Includes: Enclosed Cab with AC/Heat, Sound Reduction, Cab Accessories Package, Deluxe Instrument Panel with Keyless Start, Radio, Heated Cloth Air Ride Suspension Seat	\$6,435	30.0%	\$4,504.50

Cab Accessories Package: Deluxe Headliner with Dome Light, Cab Accessory Harness, Power Port, Lower Interior Panels with Storage Compartments and Cup Holder.

Part Number	Description	Performance Cab Packages	SLP in US \$	Discount %	Discounted Price (USD)
-------------	-------------	--------------------------	--------------	------------	------------------------

MUST SELECT ONE BOBCAT PACKAGES OR ONE COMFORT AND ONE PERFORMANCE PACKAGE OR SELECT INDIVIDUAL OPTIONS

Standard Flow Packages:

M_-P06-P13	P13 Performance Package..... Includes: Power Bob-Tach, Hydraulic Bucket Positioning	\$1,418	30.0%	\$992.60
M_-P06-P23	P23 Performance Package..... Includes: Power Bob-Tach, 2-Speed, Hydraulic Bucket Positioning	\$3,608	30.0%	\$2,525.60
M_-P06-P27	P27 Performance Package..... Includes: Power Bob-Tach, 7-Pin Attachment Control, 2-Speed, Hydraulic Bucket Positioning	\$3,853	30.0%	\$2,697.10
M_-P06-P29	P29 Performance Package..... Includes: Power Bob-Tach, 7-Pin Attachment Control, 2-Speed, Hydraulic Bucket Positioning, Automatic Ride Control, Reversing Fan	\$5,210	30.0%	\$3,647.00
M_-P06-P39	P39 Performance Package..... Includes: Bob-Dock Ready, Power Bob-Tach, 7-Pin Attachment Control, 2-Speed, Hydraulic Bucket Positioning, Automatic Ride Control, Reversing Fan	\$6,417	30.0%	\$4,491.90

High Flow Packages:

M_-P06-P67	P67 Performance Package..... Includes: Power Bob-Tach, 7-Pin Attachment Control, High Flow, 2-Speed, Hydraulic Bucket Positioning	\$6,099	30.0%	\$4,269.30
M_-P06-P69	P69 Performance Package..... Includes: Power Bob-Tach, 7-Pin Attachment Control, High Flow, 2-Speed, Hydraulic Bucket Positioning, Automatic Ride Control, Reversing Fan	\$7,456	30.0%	\$5,219.20
M_-P06-P79	P79 Performance Package..... Includes: Bob-Dock Ready, Power Bob-Tach, 7-Pin Attachment Control, High Flow, 2-Speed, Hydraulic Bucket Positioning, Automatic Ride Control, Reversing Fan	\$8,663	30.0%	\$6,064.10

Part Number	Description	Individual Factory Options	SLP in US \$	Discount %	Discounted Price (USD)
-------------	-------------	----------------------------	--------------	------------	------------------------

CANNOT BE ADDED TO ANY ORDER WITH BOBCAT PACKAGES OR COMFORT AND PERFORMANCE PACKAGE SELECTION

NOTE: Individual Options SLP includes a 20% premium when compared to ordering the option in a package

NOTE: Several individual options may require additional equipment, see details below. If the option requires additional equipment the Bobcat ordering systems will automatically add the required equipment to the order.

Individual Cab Options

M_-R25-C04	Enclosed Cab With AC/Heat..... Deluxe cab with heat and air conditioning	\$4,535	30.0%	\$3,174.50
M_-R70-C02	Sound Reduction..... Reduces operator and by-stander noise levels	\$574	30.0%	\$401.80
M_-R08-C03	Deluxe Instrument Panel with Keyless Start..... Monitors key loader functions, communicates alerts and provides additional attachment information to track usage.	\$852	30.0%	\$596.40
M_-R26-C02	Radio..... Includes weatherproof AM/FM/NOAA Weather Band Radio, Speakers, and Antenna. Works with MP3 or other portable music player. The Cab Accessories Package is required. See NOTE above.	\$598	30.0%	\$418.60
M_-R80-C02	Cab Accessories Package..... Deluxe Headliner with Dome Light, Cab Accessory Harness, Power Port, Lower Interior Panels with Storage Compartments and Cup Holder. Required for Reversing Fan, Hydraulic Bucket Positioning, Automatic Ride Control, and SJC, Radio, Air Ride Heated Seat, Power Bob-Tach. Required for Reversing Fan, Hydraulic Bucket Positioning, Automatic Ride Control, and SJC, Radio, Air Ride Heated Seat, Power Bob-Tach	\$594	30.0%	\$415.80
M_-R05-C12	Cloth Heated Air Ride Suspension Seat..... Includes Heat on/off switch on the back of the seat. The Cab Accessories Package is required. See NOTE above.	\$570	30.0%	\$399.00

Individual Performance Options

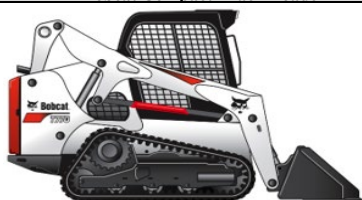
M_-R06-C03	Power Bob-Tach Attachment System..... Connect and disconnect non-hydraulic attachments from inside the cab The Cab Accessories Package is required. See NOTE above.	\$1,032	30.0%	\$722.40
M_-R06-C09	Bob-Dock Ready Attachment System..... Includes Power Bob-Tach, Bob-Dock interface plate, Tee and capped auxiliary hydraulic line within loader lift arm. Connect	\$2,480	30.0%	\$1,736.00

Bobcat Company Price Pages
Compact Track Loaders

and disconnect hydraulic attachments from inside the cab.

M_-R28-C02	7-Pin Attachment Control..... Required for High Flow Hydraulics.	\$294	30.0%	\$205.80
M_-R03-C03	High Flow Hydraulics..... Provides 26.7 GPM and 3500 PSI for attachment operation. The 7-pin attachment control kit is required.	\$2,695	30.0%	\$1,886.50
M_-R04-C02	2-Speed..... Includes 2-Speed motors and 3-Point Seat Belt	\$2,628	30.0%	\$1,839.60
M_-R11-C02	Hydraulic Bucket Positioning..... Bucket Positioning helps the operator keep the same tilt of the load during lifting. Includes On/Off switch. The Cab Accessories Package is required. See NOTE above.	\$670	30.0%	\$469.00
M_-R33-C02	Automatic Ride Control..... Automatically activates by detecting increased hydraulic lift arm pressure when the loader is carrying material. Includes on/off switch. The Cab Accessories Package is required. See NOTE above.	\$889	30.0%	\$622.30
M_-R32-C02	Reversing Fan..... Temporarily reverses the cooling fan direction to blow dust and small debris from the radiator and rear screens. Includes three operating modes: Automatic, Momentary, & OFF. The Cab Accessories Package is required. See NOTE above.	\$739	30.0%	\$517.30

T770 (Tier 4) M2-Series
Bobcat Compact Track Loader



Standard Equipment

92 HP Turbo Tier 4 Diesel Engine	Lights, Front & Rear
Air Intake Heater (Automatically Activated)	Operator Cab
Auxiliary Hydraulics: Variable Flow	- Includes: Adjustable Suspension Seat, Top & Rear
Backup Alarm	Windows, Parking Brake, Seat Bar & Seat Belt
Bob-Tach Mounting System	- Roll Over Protective Structure (ROPS) meets
Bobcat Interlock Control System (BICS™)	SAE-J1040 & ISO 3471
Controls: Bobcat Standard Controls	- Falling Object Protective Structure (FOPS) meets
Cylinder Cushioning – Lift, Tilt	SAE-J1043 & ISO 3449, Level I; (Level
Engine/Hydraulic Systems Shutdown	II is available through Bobcat Parts)
Horn	Parking Brake – Spring Applied, Pressure Released (SAPR)
Instrumentation: Engine Temperature & Fuel Gauges,	Solid Mounted Carriage with 5 Rollers
Hour meter, RPM and Warning Lights	Tracks: Rubber, 17.7" Wide
Lift Arm Support	Warranty: 2 years, or 2000 hours whichever occurs first
Lift Path: Vertical	

Quick Specs

	T770
Rated Operating Capacity - 35% of Tipping Load.....	3,475 lbs.
with Roller Suspension Carriage.....	3,325 lbs.
Rated Operating Capacity - 50% of Tipping Load.....	4,960 lbs.
Tipping Load.....	9,929 lbs.
Engine Model.....	3.4L Bobcat Engine
Engine Fuel.....	Diesel
Engine Cooling.....	Liquid
Horsepower.....	92
Hydraulic Pump Capacity – Standard Flow.....	23.0 GPM
Hydraulic Pump Capacity – High Flow (Optional).....	36.6 GPM
Travel Speed.....	6.6 MPH
Travel Speed – 2 Speed.....	6.1/10.7 MPH
Operating Weight.....	10,515 lbs.
with Roller Suspension Carriage.....	10,678 lbs.
Shipping Weight.....	9,584 lbs.
Cab Height.....	81.3"
Width (w/out Attachment).....	78.0"
Length (w/out Attachment).....	114.3"
Ground Contact Length.....	63.7"
Reach at Maximum Height.....	34.2"
Height to Hinge Pin.....	131.4"

Part Number	Description	Compact Track Loader	SLP In US \$	Discount %	Discounted Price (USD)
M0285	T770 Compact Track Loader (Equipped with Tier 4 Engine).....		\$78,851	30.0%	\$55,195.70

Bobcat Company Price Pages
Compact Track Loaders

Part Number	Description	Machine Configuration	SLP In US \$	Discount %	Discounted Price (USD)
CAN BE SELECTED WITH PACKAGES OR WITH INDIVIDUAL OPTIONS					
<u>Tracks/Undercarriage</u>					
M_-R09-C05	17.7" Multi Bar Track.....	Compatible with Solid Mounted or Roller Suspension Carriages. Loader width is 78.0"	\$850	30.0%	\$595.00
M_-R21-C13	Roller Suspension Carriage.....	Includes Solid Mounted Undercarriage and 4 Rollers with Leaf Spring style suspension. Compatible with 12.6" tracks (Loader width 73.4") or 17.7" tracks (Loader width is 78.0").Roller suspension carriage is not available with single speed or Performance Package P13	\$1,785	30.0%	\$1,249.50
<u>Controls</u>					
M_-R01-C04	Selectable Joystick Control (SJC).....	Features include: Selectable patterns (ISO or H-Pattern), Auto Idle, Horsepower Management, Speed Management, Drive Response, Drift Compensation and Foot Pedal for Engine Speed Control. *The Cab Accessories Package is required via Individual Factory Option if option ordered without package.	\$945	30.0%	\$661.50

Part Number	Description	Bobcat Packages	SLP In US \$	Discount %	Discounted Price (USD)
SELECT A ORDERING PATH: 1:) SELECT ONE BOBCAT PACKAGE OR 2:) ONE COMFORT AND ONE PERFORMANCE PACKAGE OR 3:) SELECT INDIVIDUAL OPTIONS					
M_-P10-C01	Core Package.....	Includes: Open Cab, Cab Accessories Package, Standard Panel, Adjustable Suspension Seat, Power Bob-Tach, 7-Pin Attachment Control, 2-Speed, Hydraulic Bucket Positioning	\$4,348	30.0%	\$3,043.60
M_-P10-C02	Core + Package.....	Includes: Open Cab, Cab Accessories Package, Standard Panel, Adjustable Suspension Seat, Power Bob-Tach, 7-Pin Attachment Control, High Flow, 2-Speed, Hydraulic Bucket Positioning	\$6,594	30.0%	\$4,615.80
M_-P10-C11	Deluxe Package.....	Includes: Enclosed Cab with AC/Heat, Sound Reduction, Cab Accessories Package, Standard Panel, Adjustable Suspension Seat, Power Bob-Tach, 7-Pin Attachment Control, 2-Speed, Hydraulic Bucket Positioning	\$8,605	30.0%	\$6,023.50
M_-P10-C12	Deluxe + Package.....	Includes: Enclosed Cab with AC/Heat, Sound Reduction, Cab Accessories Package, Standard Panel, Adjustable Suspension Seat, Power Bob-Tach, 7-Pin Attachment Control, High Flow, 2-Speed, Hydraulic Bucket Positioning	\$10,851	30.0%	\$7,595.70
M_-P10-C21	Premier Package.....	Includes: Enclosed Cab with AC/Heat, Sound Reduction, Cab Accessories Package, Deluxe Instrument Panel with Keyless Start, Radio, Heated Cloth Air Ride Suspension Seat, Power Bob-Tach, 7-Pin Attachment Control, High Flow, 2-Speed, Hydraulic Bucket Positioning, Automatic Ride Control, Reversing Fan	\$13,891	30.0%	\$9,723.70

Part Number	Description	Comfort Cab Packages	SLP In US \$	Discount %	Discounted Price (USD)
MUST SELECT ONE BOBCAT PACKAGE OR ONE COMFORT AND ONE PERFORMANCE PACKAGE OR SELECT INDIVIDUAL OPTIONS					
M_-P07-C10	C10 Comfort Package.....	Includes: Open Cab, Cab Accessories Package, Standard Panel, Adjustable Suspension Seat	\$495	30.0%	\$346.50
M_-P07-C23	C23 Comfort Package.....	Includes: Enclosed Cab with AC/Heat, Sound Reduction, Cab Accessories Package, Standard Panel, Adjustable Suspension Seat	\$4,752	30.0%	\$3,326.40
M_-P07-C27	C27 Comfort Package.....	Includes: Enclosed Cab with AC/Heat, Sound Reduction, Cab Accessories Package, Standard Panel, Radio, Heated Cloth Air Ride Suspension Seat	\$5,725	30.0%	\$4,007.50
M_-P07-C37	C37 Comfort Package.....	Includes: Enclosed Cab with AC/Heat, Sound Reduction, Cab Accessories Package, Deluxe Instrument Panel with Keyless Start, Radio, Heated Cloth Air Ride Suspension Seat	\$6,435	30.0%	\$4,504.50
Cab Accessories Package: Deluxe Headliner with Dome Light, Cab Accessory Harness, Power Port, Lower Interior Panels with Storage Compartments and Cup Holder.					

Part Number	Description	Performance Cab Packages	SLP in US \$	Discount %	Discounted Price (USD)
MUST SELECT ONE BOBCAT PACKAGE OR ONE COMFORT AND ONE PERFORMANCE PACKAGE OR SELECT INDIVIDUAL OPTIONS					
<u>Standard Flow Packages:</u>					
M_-P06-P13	P13 Performance Package.....	Includes: Power Bob-Tach, Hydraulic Bucket Positioning	\$1,418	30.0%	\$992.60
M_-P06-P23	P23 Performance Package.....	Includes: Power Bob-Tach, 2-Speed, Hydraulic Bucket Positioning	\$3,608	30.0%	\$2,525.60
M_-P06-P27	P27 Performance Package.....	Includes: Power Bob-Tach, 7-Pin Attachment Control, 2-Speed, Hydraulic Bucket Positioning	\$3,853	30.0%	\$2,697.10
M_-P06-P29	P29 Performance Package.....		\$5,210	30.0%	\$3,647.00

Bobcat Company Price Pages
Compact Track Loaders

Includes: Power Bob-Tach, 7-Pin Attachment Control, 2-Speed, Hydraulic Bucket Positioning, Automatic Ride Control, Reversing Fan

M_-P06-P39	P39 Performance Package..... Includes: Bob-Dock Ready, Power Bob-Tach, 7-Pin Attachment Control, 2-Speed, Hydraulic Bucket Positioning, Automatic Ride Control, Reversing Fan	\$6,417	30.0%	\$4,491.90
<u>High Flow Packages:</u>				
M_-P06-P67	P67 Performance Package..... Includes: Power Bob-Tach, 7-Pin Attachment Control, High Flow, 2-Speed, Hydraulic Bucket Positioning	\$6,099	30.0%	\$4,269.30
M_-P06-P69	P69 Performance Package..... Includes: Power Bob-Tach, 7-Pin Attachment Control, High Flow, 2-Speed, Hydraulic Bucket Positioning, Automatic Ride Control, Reversing Fan	\$7,456	30.0%	\$5,219.20
M_-P06-P79	P79 Performance Package..... Includes: Bob-Dock Ready, Power Bob-Tach, 7-Pin Attachment Control, High Flow, 2-Speed, Hydraulic Bucket Positioning, Automatic Ride Control, Reversing Fan	\$8,663	30.0%	\$6,064.10

Part Number	Description	Individual Factory Options	SLP in US \$	Discount %	Discounted Price (USD)
-------------	-------------	----------------------------	--------------	------------	------------------------

CANNOT BE ADDED TO ANY ORDER WITH BOBCAT PACKAGE OR COMFORT AND PERFORMANCE PACKAGE SELECTION

NOTE: Individual Options SLP includes a 20% premium when compared to ordering the option in a package

NOTE: Several individual options may require additional equipment, see details below. If the option requires additional equipment the Bobcat ordering systems will automatically add the required equipment to the order.

Individual Cab Options

M_-R25-C04	Enclosed Cab With AC/Heat..... Deluxe cab with heat and air conditioning	\$4,535	30.0%	\$3,174.50
M_-R70-C02	Sound Reduction..... Reduces operator and by-stander noise levels	\$574	30.0%	\$401.80
M_-R08-C03	Deluxe Instrument Panel with Keyless Start..... Monitors key loader functions, communicates alerts and provides additional attachment information to track usage.	\$852	30.0%	\$596.40
M_-R26-C02	Radio..... Includes weatherproof AM/FM/NOAA Weather Band Radio, Speakers, and Antenna. Works with MP3 or other portable music player. The Cab Accessories Package is required. See NOTE above.	\$598	30.0%	\$418.60
M_-R80-C02	Cab Accessories Package..... Deluxe Headliner with Dome Light, Cab Accessory Harness, Power Port, Lower Interior Panels with Storage Compartments and Cup Holder. Required for Reversing Fan, Hydraulic Bucket Positioning, Automatic Ride Control, and SJC, Radio, Air Ride Heated Seat, Power Bob-Tach. Required for Reversing Fan, Hydraulic Bucket Positioning, Automatic Ride Control, and SJC, Radio, Air Ride Heated Seat, Power Bob-Tach	\$594	30.0%	\$415.80
M_-R05-C12	Cloth Heated Air Ride Suspension Seat..... Includes Heat on/off switch on the back of the seat. The Cab Accessories Package is required. See NOTE above.	\$570	30.0%	\$399.00

Individual Performance Options

M_-R06-C03	Power Bob-Tach Attachment System..... Connect and disconnect non-hydraulic attachments from inside the cab The Cab Accessories Package is required. See NOTE above.	\$1,032	30.0%	\$722.40
M_-R06-C09	Bob-Dock Ready Attachment System..... Includes Power Bob-Tach, Bob-Dock interface plate, Tee and capped auxiliary hydraulic line within loader lift arm. Connect and disconnect hydraulic attachments from inside the cab.	\$2,480	30.0%	\$1,736.00
M_-R28-C02	7-Pin Attachment Control..... Required for High Flow Hydraulics.	\$294	30.0%	\$205.80
M_-R03-C03	High Flow Hydraulics..... Provides 26.7 GPM and 3500 PSI for attachment operation. The 7-pin attachment control kit is required.	\$2,695	30.0%	\$1,886.50
M_-R04-C02	2-Speed..... Includes 2-Speed motors and 3-Point Seat Belt	\$2,628	30.0%	\$1,839.60
M_-R11-C02	Hydraulic Bucket Positioning..... Bucket Positioning helps the operator keep the same tilt of the load during lifting. Includes On/Off switch. The Cab Accessories Package is required. See NOTE above.	\$670	30.0%	\$469.00
M_-R33-C02	Automatic Ride Control..... Automatically activates by detecting increased hydraulic lift arm pressure when the loader is carrying material. Includes on/off switch. The Cab Accessories Package is required. See NOTE above.	\$889	30.0%	\$622.30
M_-R32-C02	Reversing Fan..... Temporarily reverses the cooling fan direction to blow dust and small debris from the radiator and rear screens. Includes three operating modes: Automatic, Momentary, & OFF. The Cab Accessories Package is required. See NOTE above.	\$739	30.0%	\$517.30

**T870 (Tier 4) M2-Series
Bobcat Compact Track Loader**





Standard Equipment

- | | |
|--|--|
| 100 HP Turbo Tier 4 Diesel Engine | Lights, Front & Rear |
| 2-Speed Travel | Operator Cab |
| Air Intake Heater (Automatically Activated) | - Includes: Adjustable Suspension Seat, Top & Rear |
| Auxiliary Hydraulics: Variable Flow | Windows, Parking Brake, Seat Bar & Seat Belt |
| Backup Alarm | - Roll Over Protective Structure (ROPS) meets |
| Bob-Tach Mounting System | SAE-J1040 & ISO 3471 |
| Bobcat Interlock Control System (BICS™) | - Falling Object Protective Structure (FOPS) meets |
| Controls: Bobcat Standard with Power Assist | SAE-J1043 & ISO 3449, Level I; (Level |
| Cylinder Cushioning – Lift, Tilt | II is available through Bobcat Parts) |
| Engine/Hydraulic Systems Shutdown | Parking Brake – Spring Applied, Pressure Released (SAPR) |
| Horn | 5 Link Torsion Suspension with 5 Rollers |
| Instrumentation: Engine Temperature & Fuel Gauges, | Hydraulic Track Tensioning |
| Hour meter, RPM and Warning Lights | Tracks: Rubber, 17.7" Wide |
| Lift Arm Support | Warranty: 2 years, or 2000 hours whichever occurs first |
| Lift Path: Vertical | |

Quick Specs

	T870
Rated Operating Capacity - 35% of Tipping Load.....	3,650 lbs.
Rated Operating Capacity - 50% of Tipping Load.....	5,200 lbs.
Tipping Load.....	10,430 lbs.
Engine Model.....	3.4L Bobcat Engine
Engine Fuel.....	Diesel
Engine Cooling.....	Liquid
Horsepower.....	100
Hydraulic Pump Capacity – Standard Flow.....	23.0 GPM
Hydraulic Pump Capacity – High Flow (Optional).....	36.6 GPM
Travel Speed.....	5.5 MPH
Travel Speed – 2 Speed.....	9.3 MPH
Operating Weight.....	12,925 lbs.
Shipping Weight.....	11,749 lbs.
Cab Height.....	84.8"
Width (w/out Attachment).....	82.8"
Length (w/out Attachment).....	119.3"
Ground Contact Length.....	70.2"
Reach at Maximum Height.....	36.5"
Height to Hinge Pin.....	145.4"

Part Number	Description	Compact Track Loader	SLP In US \$	Discount %	Discounted Price (USD)
-------------	-------------	----------------------	--------------	------------	------------------------

M0293	T870 Compact Track Loader (Equipped with Tier 4 Engine).....		\$98,105	30.0%	\$68,673.50
-------	--	--	----------	-------	-------------

Part Number	Description	Machine Configuration	SLP In US \$	Discount %	Discounted Price (USD)
-------------	-------------	-----------------------	--------------	------------	------------------------

CAN BE SELECTED WITH PACKAGES OR WITH INDIVIDUAL OPTIONS

Controls

M_-R01-C04	Selectable Joystick Control (SJC)..... Features include: Selectable patterns (ISO or H-Pattern), Auto Idle, Horsepower Management, Speed Management, Drive Response, Drift Compensation and Foot Pedal for Engine Speed Control. *The Cab Accessories Package is required via Individual Factory Option if option ordered without package.		\$945	30.0%	\$661.50
------------	---	--	-------	-------	----------

Part Number	Description	Bobcat Packages	SLP In US \$	Discount %	Discounted Price (USD)
-------------	-------------	-----------------	--------------	------------	------------------------

SELECT A ORDERING PATH:
1:) SELECT ONE BOBCAT PACKAGE OR
2:) ONE COMFORT AND ONE PERFORMANCE PACKAGE OR
3:) SELECT INDIVIDUAL OPTIONS

M_-P10-C21	Premier Package..... Includes: Enclosed Cab with AC/Heat, Sound Reduction, Cab Accessories Package, Deluxe Instrument Panel with Keyless Start, Radio, Heated Cloth Air Ride Suspension Seat, Power Bob-Tach, 7-Pin Attachment Control, High Flow, 2-Speed, Hydraulic Bucket Positioning, Automatic Ride Control, Reversing Fan		\$7,062	30.0%	\$4,943.40
------------	--	--	---------	-------	------------

Part Number	Description	Comfort Cab Packages	SLP In US \$	Discount %	Discounted Price (USD)
-------------	-------------	----------------------	--------------	------------	------------------------

Bobcat Company Price Pages
Compact Track Loaders

MUST SELECT ONE COMFORT AND ONE PERFORMANCE PACKAGE OR SELECT INDIVIDUAL OPTIONS

M_-P07-C37	C37 Comfort Package..... Includes: Enclosed Cab with AC/Heat, Sound Reduction, Cab Accessories Package, Deluxe Instrument Panel with Keyless Start, Radio, Heated Cloth Air Ride Suspension Seat	\$2,656	30.0%	\$1,859.20
	Cab Accessories Package: Deluxe Headliner with Dome Light, Cab Accessory Harness, Power Port, Lower Interior Panels with Storage Compartments and Cup Holder.			

Part Number	Description	Performance Cab Packages	SLP in US \$	Discount %	Discounted Price (USD)
-------------	-------------	--------------------------	--------------	------------	------------------------

MUST SELECT ONE COMFORT AND ONE PERFORMANCE PACKAGE OR SELECT INDIVIDUAL OPTIONS

	<u>Standard Flow Packages:</u>			
M_-P06-P29	P29 Performance Package..... Includes: Power Bob-Tach, 7-Pin Attachment Control, 2-Speed, Hydraulic Bucket Positioning, Automatic Ride Control, Reversing Fan	\$2,160	30.0%	\$1,512.00
	<u>High Flow Packages:</u>			
M_-P06-P67	P67 Performance Package..... Includes: Power Bob-Tach, 7-Pin Attachment Control, High Flow, 2-Speed, Hydraulic Bucket Positioning	\$3,049	30.0%	\$2,134.30
M_-P06-P69	P69 Performance Package..... Includes: Power Bob-Tach, 7-Pin Attachment Control, High Flow, 2-Speed, Hydraulic Bucket Positioning, Automatic Ride Control, Reversing Fan	\$4,406	30.0%	\$3,084.20

Part Number	Description	Individual Factory Options	SLP in US \$	Discount %	Discounted Price (USD)
-------------	-------------	----------------------------	--------------	------------	------------------------

CANNOT BE ADDED TO ANY ORDER WITH COMFORT AND PERFORMANCE PACKAGE SELECTION

NOTE: Individual Options SLP includes a 20% premium when compared to ordering the option in a package

NOTE: Several individual options may require additional equipment, see details below. If the option requires additional equipment the Bobcat ordering systems will automatically add the required equipment to the order.

	<u>Individual Cab Options</u>			
M_-R70-C02	Sound Reduction..... Reduces operator and by-stander noise levels	\$574	30.0%	\$401.80
M_-R08-C03	Deluxe Instrument Panel with Keyless Start..... Monitors key loader functions, communicates alerts and provides additional attachment information to track usage.	\$852	30.0%	\$596.40
M_-R26-C02	Radio..... Includes weatherproof AM/FM/NOAA Weather Band Radio, Speakers, and Antenna. Works with MP3 or other portable music player. The Cab Accessories Package is required. See NOTE above.	\$598	30.0%	\$418.60
M_-R05-C12	Cloth Heated Air Ride Suspension Seat..... Includes Heat on/off switch on the back of the seat. The Cab Accessories Package is required. See NOTE above.	\$570	30.0%	\$399.00
	<u>Individual Performance Options</u>			
M_-R28-C02	7-Pin Attachment Control..... Required for High Flow Hydraulics.	\$294	30.0%	\$205.80
M_-R03-C03	High Flow Hydraulics..... Provides 26.7 GPM and 3500 PSI for attachment operation. The 7-pin attachment control kit is required.	\$2,695	30.0%	\$1,886.50
M_-R11-C02	Hydraulic Bucket Positioning..... Bucket Positioning helps the operator keep the same tilt of the load during lifting. Includes On/Off switch. The Cab Accessories Package is required. See NOTE above.	\$670	30.0%	\$469.00
M_-R33-C02	Automatic Ride Control..... Automatically activates by detecting increased hydraulic lift arm pressure when the loader is carrying material. Includes on/off switch. The Cab Accessories Package is required. See NOTE above.	\$889	30.0%	\$622.30
M_-R32-C02	Reversing Fan..... Temporarily reverses the cooling fan direction to blow dust and small debris from the radiator and rear screens. Includes three operating modes: Automatic, Momentary, & OFF. The Cab Accessories Package is required. See NOTE above.	\$739	30.0%	\$517.30

Kay D. Norris

From: Chris Gerving <chris.gerving@doosan.com>
Sent: Friday, April 29, 2022 4:16 PM
To: Kay D. Norris
Cc: Alyx Schmitz
Subject: EXTERNAL Updated Invoices

WARNING: This email originated outside of Jackson County.
DO NOT CLICK links or attachments unless you recognize the sender and know the content is safe.

Good Afternoon,

I am responding to your inquiry relating to the Dealer PDI, freight charges, and material & logistics fees that were included on quotes AMS-04737v1 and AMS-04736v3 under the MO NASPO Construction contract. These items are addressed in section 5 of Exhibit B – Scope of Work.

“Any allowable freight, shipping and handling costs and set-up fees paid by a Purchasing Entity are to be annotated on the quote/invoice as a separate line item. Quotes shall show the Contractor’s suggested retail price less any trade-in allowance if applicable, contract percentage discount off, freight cost, set-up fees, any allied or incidental costs and the final price for each item delivered.”

We classify PDI and Assembly as set-up fees and the surcharge is being utilized to offset short term incidental costs due to supply chain constraints. As such, they are included as separate line items in accordance with the scope of work. If you have any additional questions, feel free to reach out to me and we can continue to discuss.

Respectfully,

Chris A. Gerving
Government Account Manager
Bobcat Company
250 E Beaton Drive
West Fargo, ND 58078
M (701) 526-8357
www.bobcat.com/government
www.bobcat.com



