

JACKSON COUNTY LEGISLATURE COVID UPDATE

October 25, 2021



JACKSON COUNTY HEALTH DEPARTMENT

@JacksonCountyHD



COVID-19 TRENDS



JACKSON COUNTY HEALTH DEPARTMENT



National Data

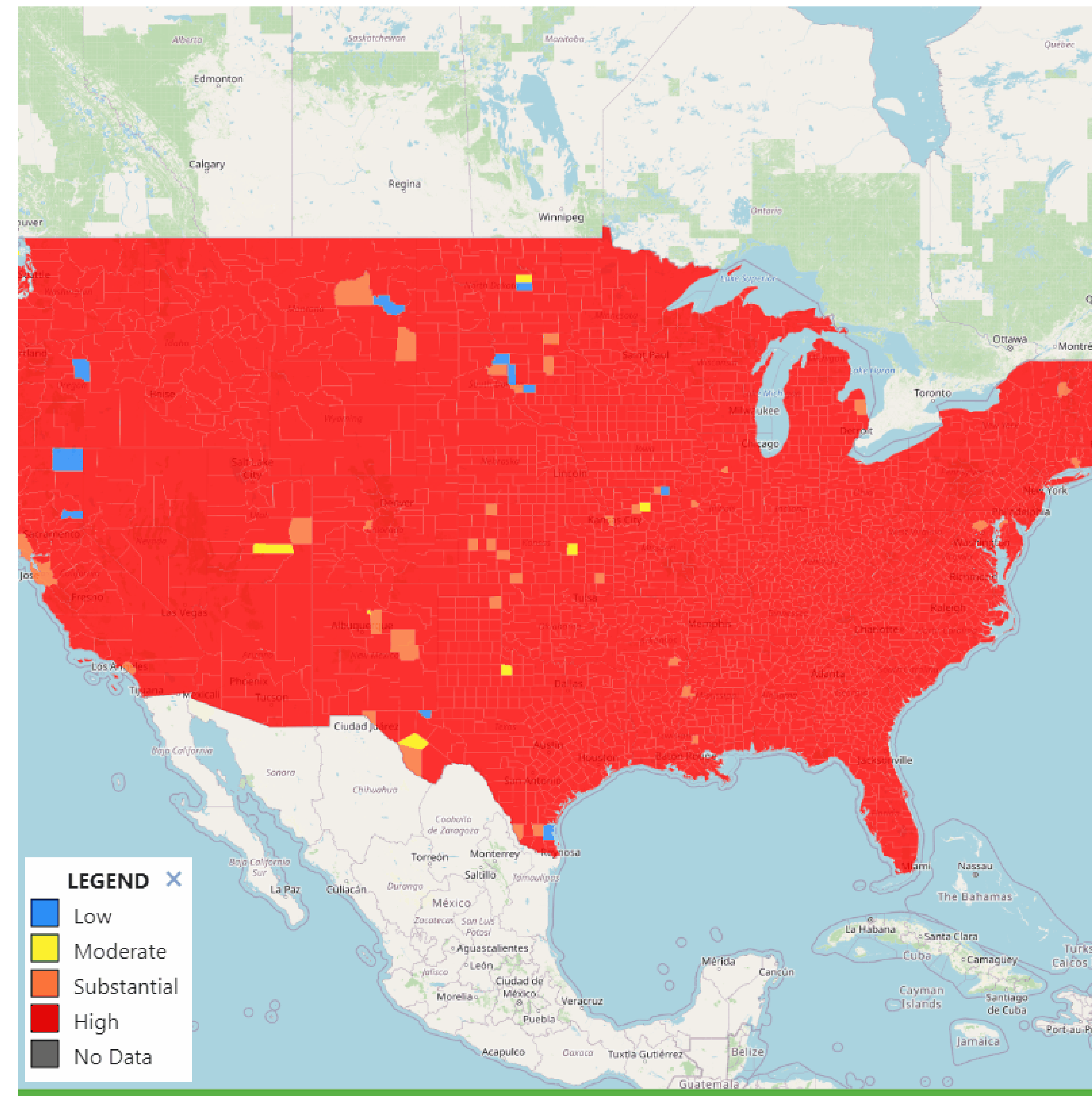
- Jackson County and the surrounding counties in Missouri and Kansas, except for Platte County & Clay County, Missouri, are classified as “high transmission” areas according to the CDC.
- Platte County & Clay County are currently experiencing “substantial transmission” levels.

Source: <https://covid.cdc.gov/covid-data-tracker/#county-view>

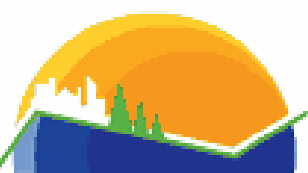
Data Accessed: October 22, 2021



JACKSON COUNTY HEALTH DEPARTMENT



COVID-19 | PHASED PREVENTION | LEVELS OF COMMUNITY TRANSMISSION | ALL COUNTIES | 09/23/2021



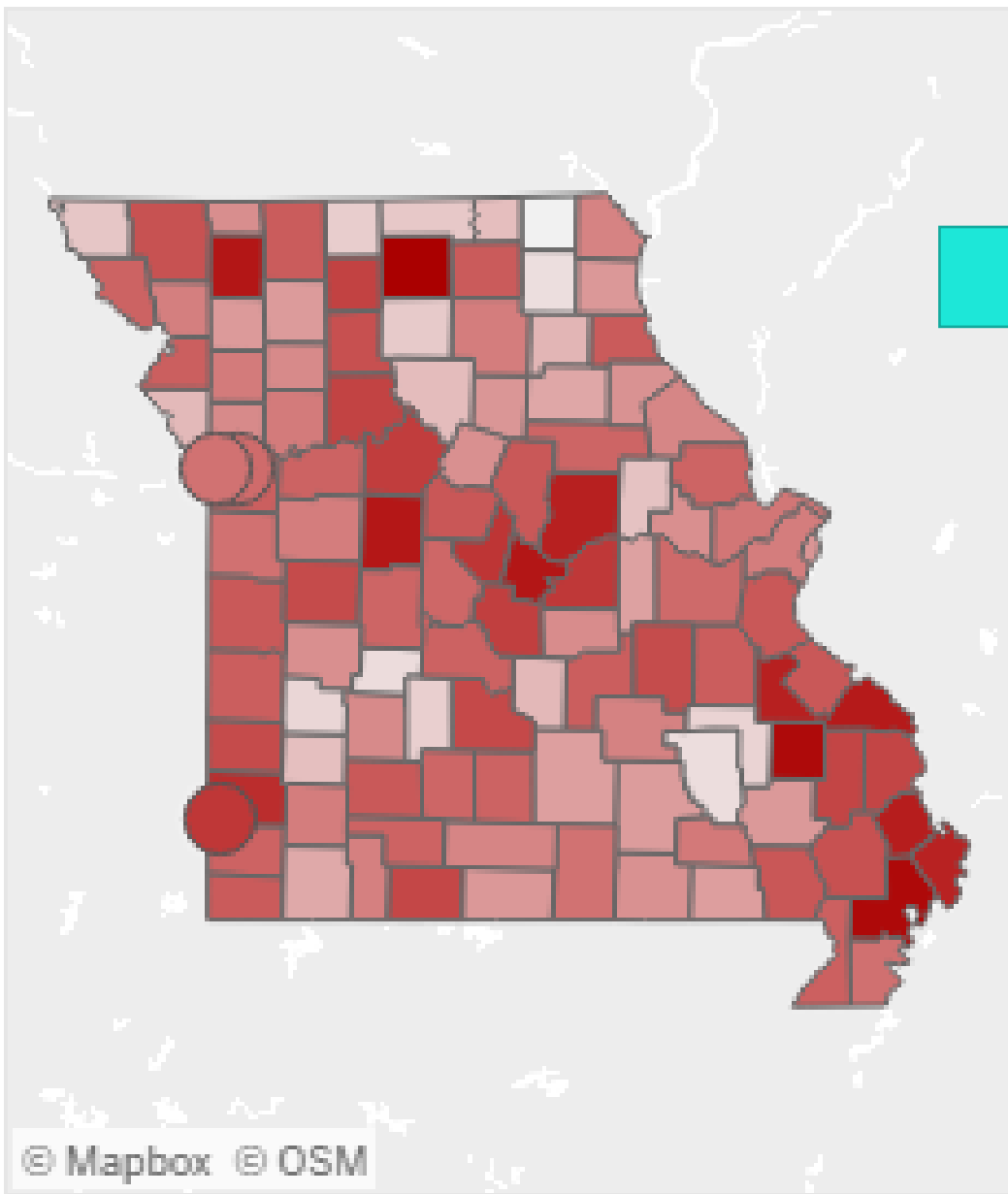
Explore more data at ephtracking.cdc.gov/DataExplorer

State Data

Maps Using PCR/Genomic Sequencing Metrics

Cases by Jurisdiction to Date

Colored by Per 100k



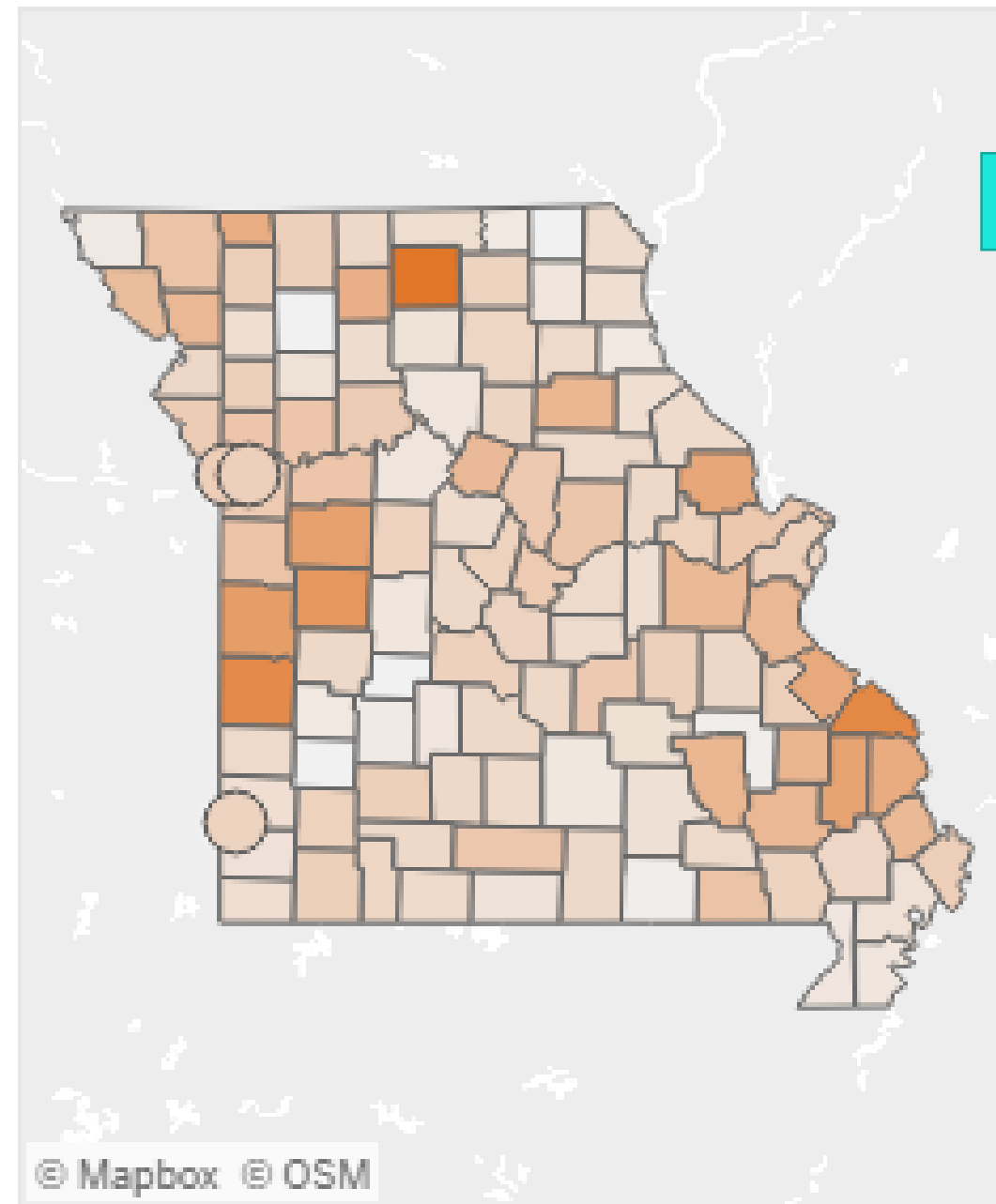
Sorted by Cases (Per 100k)

Colored by Total Volume

PHELPS	42	11,969
VERNON	43	11,968
BUCHANAN	44	11,935
JACKSON	45	11,896
DUNKLIN	46	11,846
CAMDEN	47	11,765
WRIGHT	48	11,734
HOLT	49	11,719
LAFAYETTE	50	11,719
NEWTON	51	11,699
CHRISTIAN	52	11,698
LINCOLN	53	11,682
AUDRAIN	54	11,612
BENTON	55	11,608

Past 7 Days: Cases by Juris.

Colored by Per 100k



Sorted by Cases (Per 100k)

Colored by Total Volume

BOONE	33	88
COLE	34	83
JACKSON	35	83
CARROLL	36	81
PLATTE	37	80
GENTRY	38	76
MISSISSIPPI	39	76
KANSAS CITY	40	75
ST LOUIS	41	75
ST FRANCOIS	42	74
CLINTON	43	74
GREENE	44	73
BARRY	45	73
HARRISON	46	72

As of October 22, 2021: <https://health.mo.gov/living/healthcondiseases/communicable/novel-coronavirus/data/public-health/county.php>



JACKSON COUNTY HEALTH DEPARTMENT

@JacksonCountyHD



CASES

Confirmed Cases: 31,183

Probable Cases: 8,586

Deaths: 514

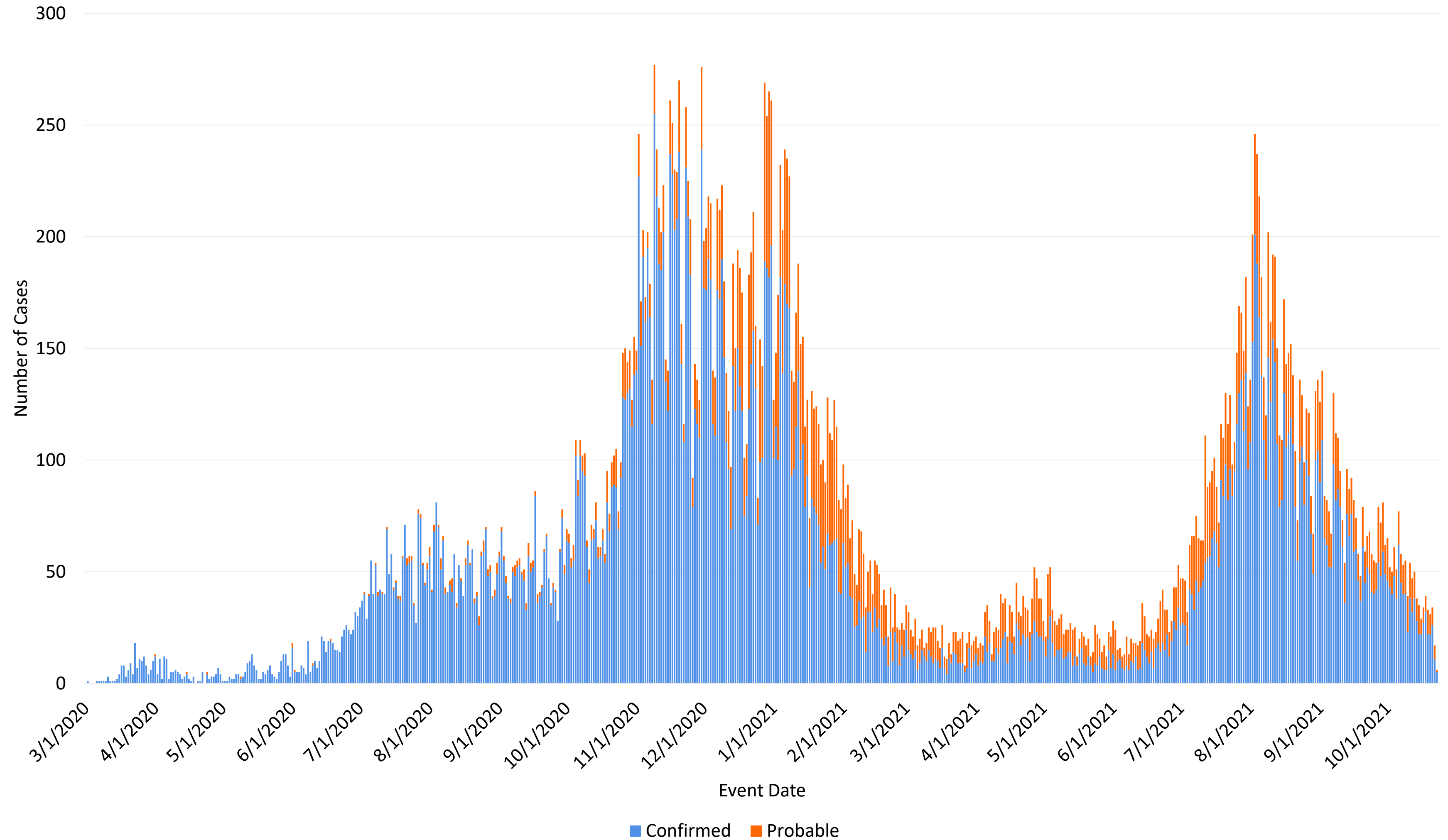
7-Day Average Daily New Cases

<u>Week</u>	<u>Average</u>
Week 9/12	77.57
Week 9/19	61.86
Week 9/26	66.43
Week 10/3	57.86
Week 10/10*	41.71

7-Day Case Rate per 100,000

<u>Week</u>	<u>Case Rate</u>
Week 9/12	199.99
Week 9/19	159.47
Week 9/26	171.26
Week 10/3	149.16
Week 10/10*	107.54

COVID-19 Cases by Event Date and Case Status, Eastern Jackson County, 2020-2021



*still receiving data and case reports – value incomplete.



JACKSON COUNTY HEALTH DEPARTMENT

@JacksonCountyHD



PERCENT POSITIVE

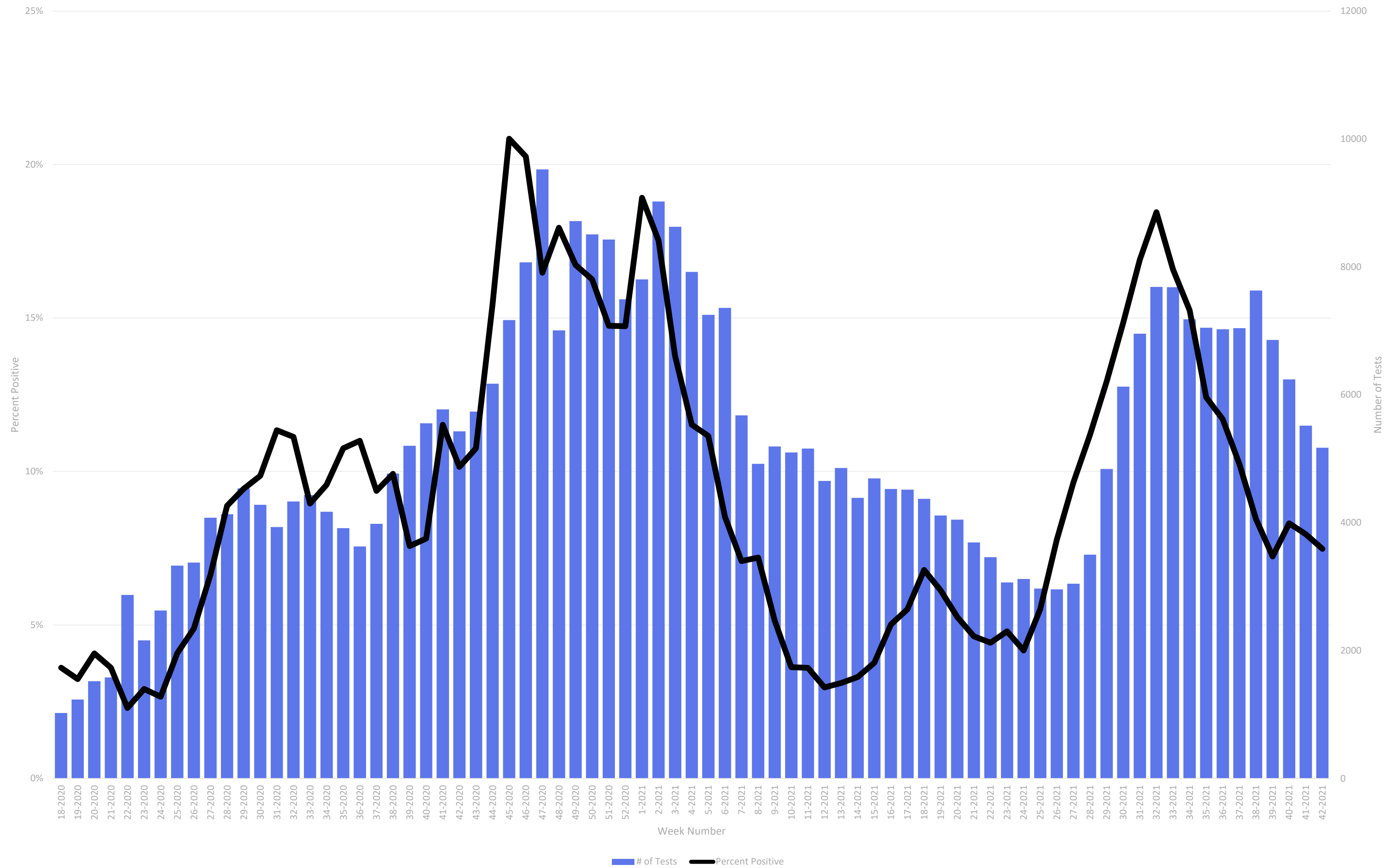
Tests Per Week

<u>Week</u>	<u>Count</u>
Week 9/12	7,629
Week 9/19	6,858
Week 9/26	6,241
Week 10/3	5,517
Week 10/10*	5,173

Percent Positive

<u>Week</u>	<u>Count</u>
Week 9/12	8.45%
Week 9/19	7.23%
Week 9/26	8.32%
Week 10/3	7.96%
Week 10/10*	7.48%

Percent Positive and Number of COVID-19 Specimens Collected by Week, Eastern Jackson County, 2020-2021



JACKSON COUNTY HEALTH DEPARTMENT

@JacksonCountyHD



*still receiving data and case reports – value incomplete.

CDC Criteria- Level of Community Transmission

Indicator	Low Transmission (Blue)	Moderate Transmission (Yellow)	Substantial Transmission (Orange)	High Transmission (Red)
Total new cases per 100,000 persons in the past 7 days	0-9.99	10-49.99	50-99.99	>100
Percentage of NAATs that are positive during the past 7 days	0-4.99%	5-7.99%	8-9.99%	>10.0%

Data Source	New Cases per 100,000	Percent Positivity	Level of Transmission	Comment:
CDC	132	7.47%	High	Includes all of Jackson County
DHSS	83	7%	Substantial	Only includes PCR Results
JACOHD	103	7.15%	High	Includes PCR & Antigen Results

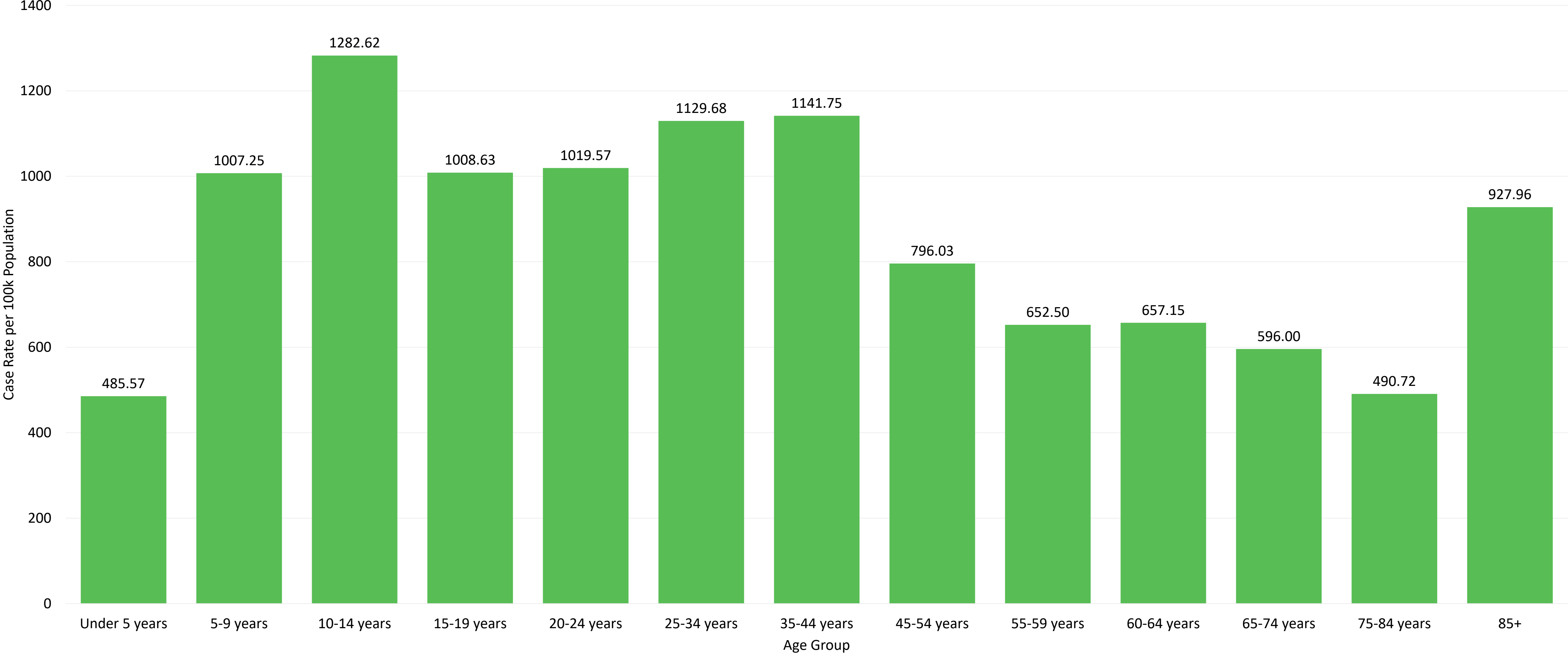
Data Accessed: October 22, 2021

CDC Guidance for areas in High or Substantial Levels of Community Transmission:
Everyone in **Jackson County, Missouri** should wear a mask in public, indoor settings.



MONTHLY CASE RATES BY AGE GROUP, SEPTEMBER

COVID-19 Case Rate per 100k Population by Age Group, Eastern Jackson County, September, 2021



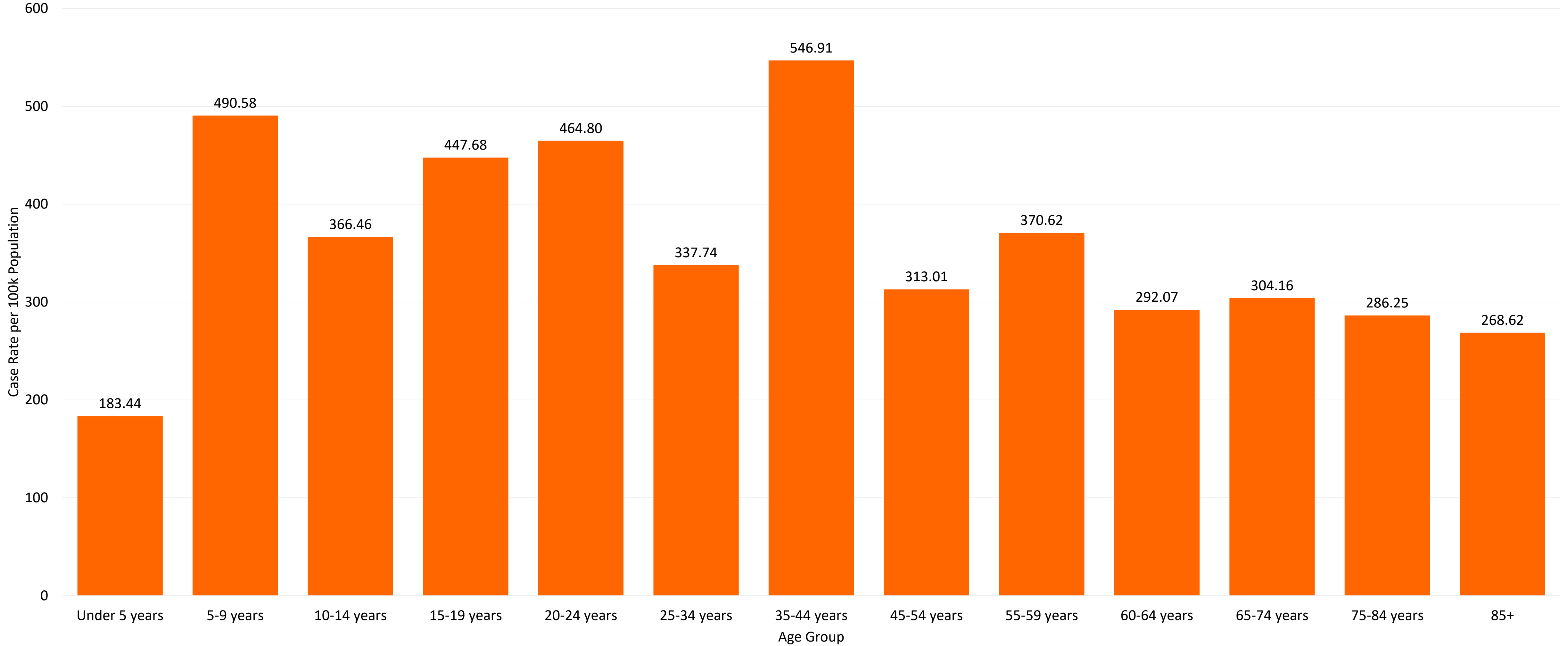
JACKSON COUNTY HEALTH DEPARTMENT

@JacksonCountyHD



MONTHLY CASE RATE BY AGE GROUP, OCTOBER

COVID-19 Case Rate per 100k Population by Age Group, Eastern Jackson County, October, 2021



JACKSON COUNTY HEALTH DEPARTMENT

@JacksonCountyHD



VACCINATIONS

- The 25-34 age group had the highest gain in vaccine initiation.
- The 25-34 age group has the lowest vaccination completion percentage of all fully eligible age groups. This group continuously maintains among the highest case rates as well.
- As a population, vaccination rates are inadequate.

Total Vaccinated (TOTAL POP)

% Initiated	53.23%
% Completed	47.26%

Total Vaccinated (ELIGIBLE)

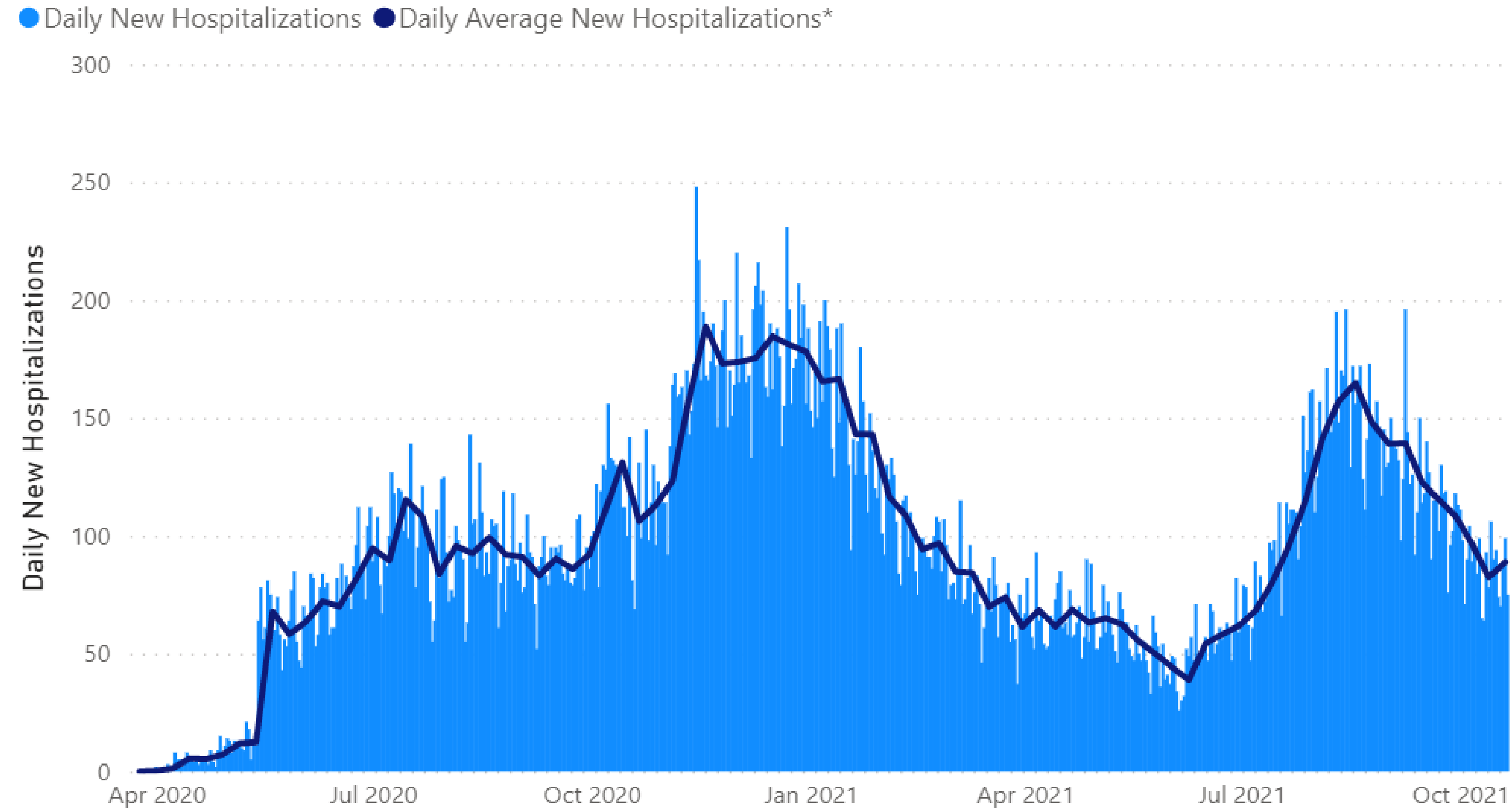
% Initiated	65.35%
% Completed	58.03%



STRAIN ON THE HEALTH CARE SYSTEM

- Daily Average of New Hospitalizations for the MARC region declined, from 102 daily new hospitalizations on 9/24 to 75 on 10/22.
- Per the HCC Metro Report on October 18, 2021, 9 of 26 (34.6%) hospitals reported an anticipated shortage in staffing in the next week. This is an increase from the previous week at 8 of 27 (29.6%) (10/8/21).
- While Daily New COVID Hospitalizations are decreasing, other factors such as acuity, length of stay, lack of staff, and overall patient admission rates continue to strain hospital operational/staffed capacity (especially ICUs)

New Hospitalizations 7-day rolling average trend line* and daily bars for single jurisdiction



Source: <https://marc2.org/covidhub/>
Data Accessed: October 22, 2021



JACKSON COUNTY HEALTH DEPARTMENT

@JacksonCountyHD



Mitigating the Current Trend



Community Mitigation Strategies

“As communities adjust mitigation strategies, they should ensure that the healthcare system capacity will not be exceeded. Communities need to assure healthcare systems have adequate staffing, a surplus of inpatient and ICU beds, and critical medical equipment and supplies such as PPE.”

- Vaccination
- Testing
- Contact Tracing
- Isolation & Quarantine
- Social Distancing & Gathering Limits
- Mask Wearing
- Healthy Behaviors (Hygiene)



JACKSON COUNTY HEALTH DEPARTMENT





RECOMMENDATIONS

In-line with CDC guidance, the Jackson County Health Department continues to support wearing a mask, regardless of vaccination status, in all indoor places within Eastern Jackson County. This continued action provides relief to local hospitals and continues to decrease the “high/substantial” transmission in Jackson County.

@JacksonCountyHD

